

Joreen™
18/10 and Silverplate

A clean, contemporary fusion design
for a dynamic tabletop. This pattern flaunts
asymmetrical tining with unique styling all round.

Heavy 18/10 forged handles with a bright mirror finish.

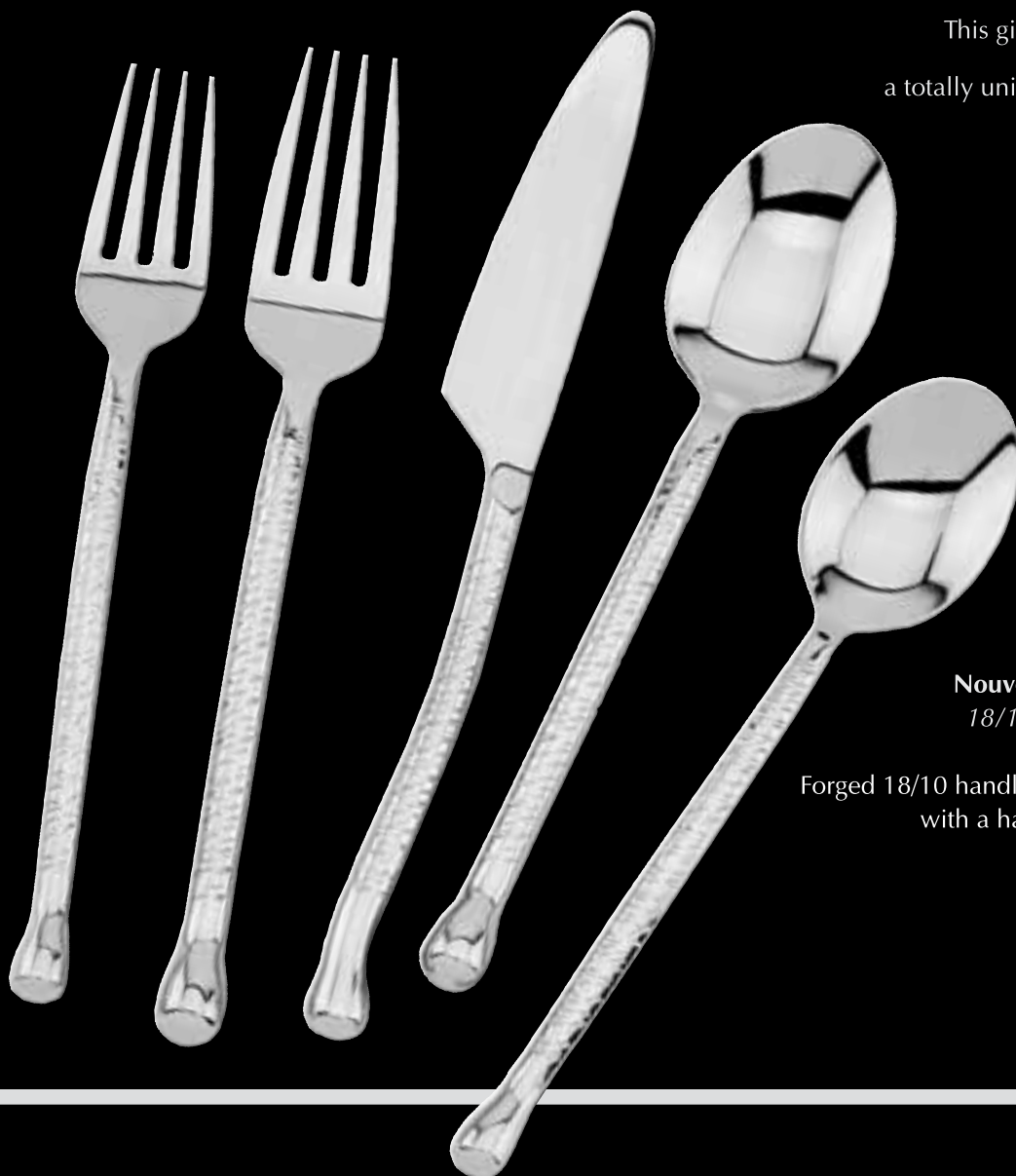


Hallmark Handmade™



With all four of the Hallmark Handmade™ patterns, the forks and spoons are cold forged in a handmade process.

This gives you the heaviest flatware with a totally unique feel. The handles of the forks and spoons are slightly longer than traditional flatware.



Nouveaux Hammered™
18/10 and Silverplate

Forged 18/10 handles in handmade styling finished with a hammered decoration.

Riptide™

18/10 and Silverplate

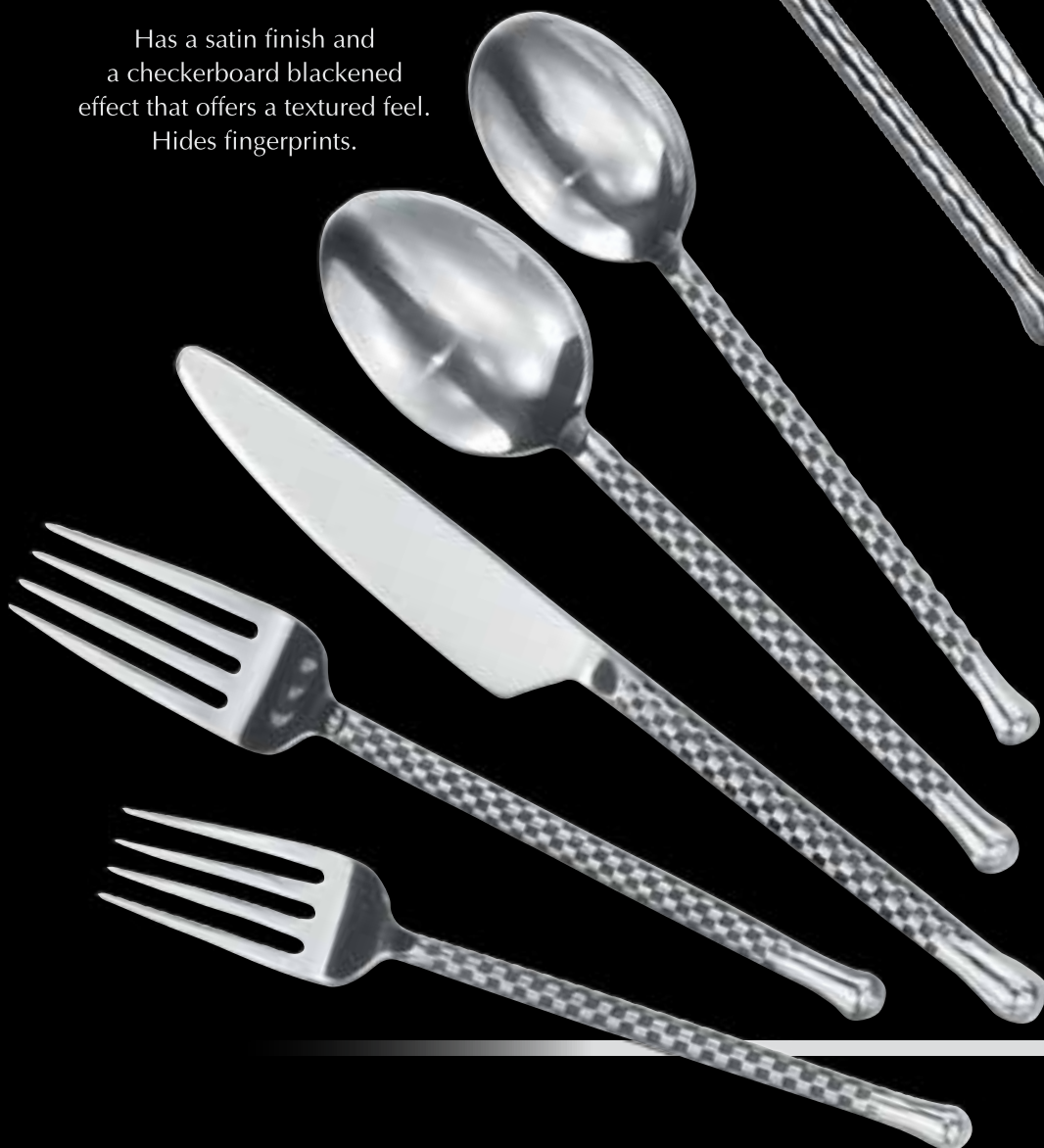
Bright finish that looks like the reflections in a moving surf. Hides fingerprints.



Charred™

18/10 and Silverplate

Has a satin finish and a checkerboard blackened effect that offers a textured feel. Hides fingerprints.





Rustic Tree™
18/10 and Silverplate

Has a satin finish. The artistic bends of the handles gives
the true feel of handmade sculpture.
Hides fingerprints.



Hallmark
Handmade™



Hallmark
OLDE WORLD
Collection



Soho™

18/10 and Silverplate

Rich European design of Olde World Traditions.
Crafted with frontal bowl and tine hallmarking,
the marks of excellence!

Mirror finish and molded tear drop handles -
you can feel the thickness.



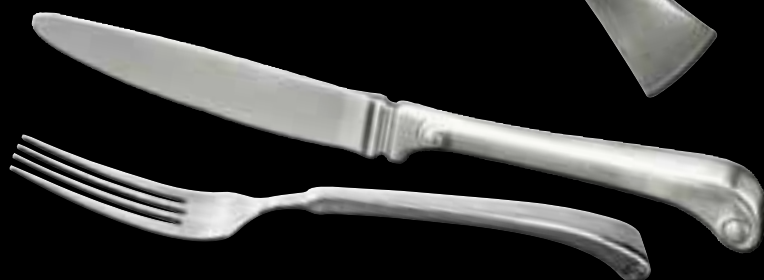
The 2000TM *Hallmark Collection*



SusannahTM
18/10 and Silverplate

The heaviest forged 18/10 handles we make
completely brushed to a Satin finish, popular today
for the rich brushed stainless look.

US PATENT



SusannahTM offers a Stand-Up Knife



The 2000TM Hallmark Collection

The timeless simplicity of these designs has the versatility to pair with any china shape and tabletop accessory.

The complete selection of items available in many of our

Hallmark CollectionTM

and Hallmark 2000 CollectionTM

patterns allow you to set your choice of Formal or European table settings.



FarmingtonTM
18/10 and Silverplate

These forged handles are some of the heaviest and thickest handles made! English Tudor look in an antique butler (brushed) finish is on the entire piece.



Satin Soprano™
18/10 and Silverplate

Forged 18/10 handles completely
brushed to a Satin finish.



Frosted Vogue™
18/10 and Silverplate

Frosted Vogue has frost finish han-
dles which hide fingerprints and
bright mirror finish bowls, blades
and tines.

Soprano™

18/10 and Silverplate

Forged handles are the heaviest and thickest handles made! Reminiscent of styles from Ancient Rome. Mirror finish.



Vogue™

18/10 and Silverplate

Forged handles create a totally different look and feel. Elegant simplicity shines in this seductive design. Mirror finish.



Modernaire™

18/10 and Silverplate

Forged handles give you the heaviest flatware. Complete satin finish hides fingerprints. This contemporary brushed pewter is uniquely modern.



DramatiqueTM & AthenianTM

A second matte finishing process creates a glowing two-tone surface - frosted with polished edges.

Frosted surfaces hide fingerprints.

AthenianTM

18/10 and Silverplate



DramatiqueTM

18/10 and Silverplate

ContinuoTM

18/10 and Silverplate

A series of graceful lines make this sleek pattern the perfect choice for embossed & plain rim dinnerware. Mirror finish.



Classic Baroque™
18/10 and Silverplate

Pierced plumes, the styling
of famous sterling patterns.



Chanteclair™
18/10 and Silverplate

Heaviest gauge 18/10 we make in
traditional coil steel in an architectural
geometric design. Knives are forged.

US PATENT



IronStone™

18/10 and Silverplate

Classic 17th century hammered design.
The texture hides fingerprints while
it captures the light and sparkles.

Hallmark

SILVERPLATE™

Silverplate in use develops a patina that glows
in low light settings. The classic formal design
is a hotel and club standard. A stainless base met-
al is used making burnishing unnecessary!
Care requires a detarnishing bath periodically
and daily use of a detarnishing presoak.
Mirror silverplated finish, lifetime warranty



Classic Silver™
Silverplate

The Hallmark Collection™

Hallmark 18/10 Flatware is made of 18% Chrome and 10% Nickel Stainless Steel.

The European Foodservice Standard

The Advantage of Nickel

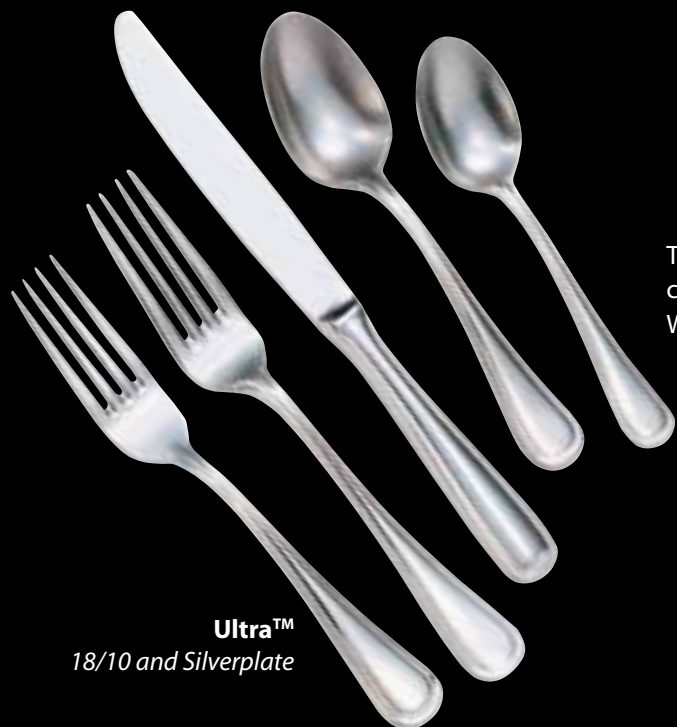
- Glows like silver in low light settings
- Insurance policy against staining
- Is protected from chemical attacks
- Carefree flatware

Grade Rolled Flatware adds tensile strength and balance

European Size Options

- Balances the place setting
- Coordinates with any size dinnerware
- European forks and knives are for 10 3/4" plates and larger





The beauty of this collection shines through continuous smooth curves and mirror finish. With its extra heavy weight, Ultra™ is the ideal choice.

Ultra™
18/10 and Silverplate



11



06



14



04



39



05



051



28

- | | | | |
|-----|---------------------------------|-----|-----------------------------------|
| 01 | Teaspoon, 6 1/16" | 15 | Cocktail Fork, 5 9/16" |
| 03 | Serving Spoon, 8 3/8" | 17 | Cold Meat Fork, 8 1/2" |
| 04 | Iced Teaspoon, 7 1/4" | 21 | Gravy Ladle, 6 5/8" |
| 05 | Dinner Fork, 7 5/8" | 22 | Solid Handle Steak Knife, 9 5/16" |
| 051 | European Fork, 8 1/8" | 25 | Hollow Handle Knife, 9 1/8" |
| 06 | Salad Fork, 7" | 28 | Pierced Serving Spoon, 8 1/4" |
| 07 | Dessert Spoon, 6 15/16" | 29 | Demitasse Spoon, 4 3/8" |
| 10 | Butter Spreader, F.H., 6 13/16" | 39 | Fish Knife, 7 5/8" |
| 11 | Butter Knife, S.H., 7" | 45 | 1-Piece Knife, 8 13/16" |
| 12 | Bouillon Spoon, 6" | 451 | European Knife, 9 1/4" |
| 14 | Fish Fork, 7 1/16" | | |



03



17



45



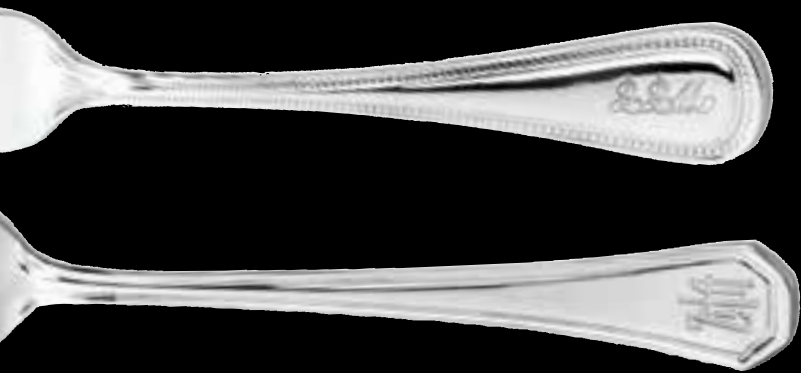
25



451



22



CUSTOMIZATION
AVAILABLE





Prim™
18/10 and Silverplate

The Hallmark Collection™ ...the classics



Chalet™
18/10 and Silverplate



Lancer™
18/10 and Silverplate

Sentry™
18/10 and Silverplate



Luxor™
18/10 and Silverplate



Classic Bead™
18/10 and Silverplate

The Hallmark Collection

FLATWARE AVAILABILITY 18/10

	01 Teaspoon	03 Serving Spoon	04 Iced Teaspoon	05 Dinner Fork	051 European Fork	0514 European Fork 4 tine	06 Salad Fork	07 Dessert Spoon	10 Butter Spreader	11 Butter Knife	12 Bouillon Spoon	14 Fish Fork	15 Cocktail Fork	17 Cold Meat Fork	21 Gravy Ladle	22 Steak Knife	25 Knife, Hollow Handle	28 Pierced Tablespoon	29 Demitasse Spoon	38 Lg Round Bowl Soup	39 Fish Knife	42 Stand Up Knife	45 Knife, 1-Pc	451 Knife, European
#26 Athenian™	•	•	•	•	•		•	•		•	•		•						•				•	•
#98 Chalet™	•	•	•	•	•		•	•	•	•	•		•				•		•				•	•
#31 Chantclair™	•	•	•	•	•		•	•	•	•	•		•						•	•			•	•
#CHAR Charred™	•	•		•			•	•		•	•		•						•				•	•
#68 Classic Baroque™	•	•	•	•	•		•	•		•	•		•						•				•	•
#92 Classic Bead™	•	•	•		•		•	•		•	•		•			•	•		•				•	•
#19 Continuo™	•	•	•	•	•		•	•		•	•		•			•			•				•	•
#22 Dramatique™	•	•	•	•	•		•	•		•	•		•						•				•	•
#53 Farmington™	•		•	•	•			•		•	•		•											•
\$63 IronStone™	•	•	•	•	•		•	•		•	•		•						•				•	•
#30 Joreen™	•		•	•	•			•		•	•		•										•	
#94 Lancer™	•	•	•	•	•		•		•		•		•			•	•		•				•	•
#93 Luxor™	•	•	•	•	•		•	•	•		•		•						•				•	•
#20 Modenaire™	•	•	•	•	•		•	•		•	•		•						•				•	•
#58 Nouveaux Hammered™	•	•		•			•	•		•	•								•				•	
#97 Prim™	•	•	•	•	•		•	•	•	•	•	•	•			•			•		•		•	•
#RIP Riptide™	•	•		•			•	•		•	•		•						•				•	
#RUS Rustic Tree™	•	•		•			•	•		•	•		•						•				•	
#95 Sentry™	•	•	•	•	•		•	•	•	•	•	•	•	•	•	•	•	•	•		•		•	•
#552 Satin Soprano™	•		•	•	•	•		•		•	•		•											•
#07 Soho™	•	•	•	•	•			•			•		•										•	•
#52 Soprano™	•		•	•	•	•		•		•	•		•											•
#56 Susannah™	•		•	•	•			•		•	•		•									•		•
#96 Ultra™	•	•	•	•	•		•	•	•	•	•	•	•	•	•	•	•	•	•		•		•	•
#25 Vogue™	•	•	•	•	•		•	•		•	•		•			•			•				•	•
#525 Vogue Frosted™	•	•	•	•	•		•	•		•	•		•						•				•	•
#44 Classic Silver™	•		•	•	•		•	•	•		•		•			•			•					•
Silverplate																								

• European Fork has 3 tines



WALCO



WIR26 Idol Cook & Serve Casserole w/ glass lid
3.3L (3.5 Qt.) 26cm 10.25" x 2.5"



WIR24 Cook & Serve Paella Pan w/ glass lid
2.3L (2.4 Qt.) 24cm 9.5" x 2"



WIR22 Idol Cook & Serve Casserole w/ glass lid
3.3L (3.5 Qt.) 22 cm 8.75" x 3.25"



Walco Idol™

Cook & Serve

18/10

A modern spin on traditional casserole and paella dishes offer features for today's buffet "cook & serve" trend.

- Suitable for all heat sources including induction heating.
- 18/10 stainless body with a 3-ply magnetic sandwiched bottom for even heating.
- The lid is glass with an 18/10 stainless rim.
- The lid and side handles are designed to hold a buffet spoon.
- A slit in the handle allows the lid to rest nicely upright while serving food.
- Handles have silicon coverings to provide protection from hot pans while transporting from kitchen to buffet

Walco Idol™

Cataplana

18/10

The Cataplanas, traditional Portuguese cookware, are perfect "cook & serve" vessels for buffets.

- Suitable for all heat sources including induction heating
- The large dome lid is designed for the expansion of shellfish opening during cooking.
- A removable handle also serves as a "hold lid open" device.
- The body has side latches that secure the lid to keep the contents safe while transporting from kitchen to buffet
- 18/10 stainless body with a 3-ply magnetic sandwiched bottom for even heating.



WIC20 Idol Cataplana with hinge and stand
1.6L (1.7 Qt.) 20cm (7.87")



WIC28 Idol Cataplana with hinge and stand
3.4L (3.6 Qt.) 28cm (11.02")



WIC36 Idol Cataplana with hinge and stand
6.0L (6.3 Qt.) 36cm (14.17")



WIH01 Idol Cataplana Stand - Handle



NEW for 2015
Walco Idol™
COLLECTION

Walco's Idol™ Collection's newest addition, the Idol Buffetware! These Serving pieces are inspired by the modern styling of Idol Chafers. The sleek hollow handles dissipate heat keeping them comfortable to the touch even when left in heated chafers food pans. The pistol grip finger holds enhance secure handling.



ID012 Solid Serving Spoon, 10"



ID014 Meat Fork, 10"

ID015 Wide Bottom Spoon, 10"



ID022 Pastry Server, 10"

ID125 Long Handle Spoon, 13"

ID126 Long Handle Slotted Spoon, 13"



**WI9UGT Walco Idol 8 Qt. Body;
Glass Top Lid, Food Pan & Spoon Holder**

WI9P Walco Idol Rectangular, 8 Qt. Chafer
Porcelain Insert, 21" x 12.75" x 2.5"

WI9L Walco Idol Glass Lid (only) 14" x 22"

53380 Spoon Rest

Soup Station Conversion Accessories make your
Oblong Chafers versatile.

11500 Soup Station Bucket With Lift off Cover,
4 Qt., 9.5" OD Diameter x 9" H

WI11SAP Soup Conversion



The induction ready Walco Idol™ 18/10 chafing dishes come complete with spoon holder, food pans in stainless and have available porcelain options. The 8 Qt. Rectangular and 7 Qt. have optional soup station adapters with 4 Qt. buckets with covers available. The self-closing, vented glass covers keep food presentations from drying out and drip channels move accumulated condensation back to water pan and not into the food.

The bottom of the chafer body is 3 ply steel magnetic bottom with an inner layer of aluminum, most efficient for heating quickly and evenly. Another induction heating option is to remove the food pan and place food inside chafer bottom for heating with no steam.

The spoon holders are a good way to add sauces to a chafing dishes offerings. Having multiple units, servers can replace with pre-filled units on the buffet.

Walco Idol™

COLLECTION

INDUCTION



WI55UGT Walco Idol 6 Qt. Body;
Glass Top Lid, Food Pan & Spoon Holder

WI55L Walco Idol 6 Qt. Glass Lid only 14" x 15"

5341 Stainless Steel Food Pan

WI55P Porcelain Insert 6 Qt.

53380 Spoon Rest





WI6UGT Walco Idol 7 Qt. Body; Glass Top Lid, Food Pan & Spoon Holder

- WI6L Walco Idol 7 Qt. Glass Lid only, 16.750" OD Diameter
- WI608 Round Food Pan 18/10, 2-1/2" D, 7 Qt.
- 53316 Porcelain Insert 6 Qt. , 15.75 "x 13.125" x 2.5"
- 53316D Porcelain Divided Insert 6 Qt., 15.75" x 13.125" x .5"



- 53380 Spoon Rest

Soup Station Conversion Accessories make your Round Chafers versatile.

- 11500 Soup Station Bucket With Lift off Cover, 4 Qt., 9.5" OD Diameter x 9" H
- 11228 Round Soup Station Ring (fits WI6 Chafer)



WI35UGT Walco Idol 4 Qt. Body; Glass Top Lid, Food Pan & Spoon Holder

- WI35L Walco Idol 4 Qt. Glass Lid only, 11.5" x 14" OD Diameter
- WI35P Walco Idol Rectangular 4 Qt. Chafer 1/2 size Porcelain Insert , 12.8"x 10.5"x 2.5"
- 53380 Spoon Rest



WI11UGT Walco Idol 11.5 Qt. Body; Glass Top Lid, Soup Bucket & Spoon Holder

- WI11L Walco Idol 11.5 Qt. Glass Lid only, 14.375" OD Diameter
- 53380 Spoon Rest



Walco Idol™

The Walco Idol™ glass lid clam shell chafers and soup station are banquet ready! Self closing, vented glass lids keep food presentations from drying out. For added versatility the body, removed from the stand, can be used on an induction table. Magnetic steel clad bottoms ensure excellent heating. Not available in silverplate.

WI9LGL Walco Idol™ Rectangular 8 Qt. Chafer Kit consisting of: WI9UGT (body; glass top lid, food pan and spoon holder) and WI9BC (burner stand and 2 fuel cups)

WI9BC Walco Idol™ Rectangular 8 Qt. Burner Stand and 2 fuel cups

WI9P Walco Idol™ Rectangular 8 Qt. porcelain insert 21"x12.75"x2.5"



Soup Station Conversion Accessories make your Oblong Chafers versatile.

11500 Soup Station Bucket With Lift off Cover, 4 Qt., 9.5" OD Diameter x 9"H

WI11SAP Oblong Double Soup Station Lid Only 21"L x 13"W x 2.125"H x 8" ID Hole Diameter



NOTE: ELECTRIC UNITS AVAILABLE

ELUNIT Heating Plate attaches by patented magnetic system, 120 volts/560 watts/4.2 amps

For use with: WI9LGL, WI55LGL and WI35LGL

WI55LGL Walco Idol™ Rectangular 6 Qt. Chafer. Kit consisting of: WI55UGT (body; glass top lid, food pan and spoon holder) and WI55BC (burner stand and 1 fuel cup)

WI55BC Walco Idol™ Rectangular 6 Qt, burner stand and 1 fuel cup

WI55P Walco Idol™ Rectangular 6 Qt. porcelain insert 14.125"x13.125"x2.5"



WI6LGL Walco Idol™ Round 7qt. Chafer Kit consisting of:
WI6UGT(body; glass top lid, food pan and spoon holder) and WI6BC
(burner stand and 1 fuel cup)

WI6BC Walco Idol™ Round 7 Qt. burner stand and 1 fuel cup

53316 Walco Idol™ Round 6 Qt. porcelain insert 15.75"x13.125"x2.5"

53316D Walco Idol™ Round 6 Qt. porcelain divided insert 15.75"x13.125"x2.5"

11228 Round Soup Station Lid

11500 Soup Bucket w/Lift off Cover



WI35LGL Walco Idol™ Rectangular 4 Qt. Chafer Kit consisting of:
WI35UGT (body; glass top lid, food pan and spoon holder)
and WI35BC (burner stand and 1 fuel cup)

WI35BC Walco Idol™ Rectangular 4 Qt. burner stand and 1 fuel cup

WI35P Walco Idol™ Rectangular 4 Qt. (1/2) size porcelain insert 12.8"x10.5"x2.5"

WI11LSSGL Walco Idol™ Round 11.5 Qt. Soup Station Kit consisting of:
WI11UGT(body; glass top lid, soup bucket and spoon holder)
and a WI11BC (burner stand and 1 fuel cup)

WI11BC Walco Idol™ Round 11.5 Qt. burner stand and 1 fuel cup



NOTE: ELECTRIC UNITS AVAILABLE
 ELUNITTRI Heating Plate attaches by patented
 magnetic system,
 120 volts/300 watts/2.5 amps
 For use with: WI6LGL and WI11SSGL.



WI6LU Walco Idol Urn 6 Liter
1.5 Gal. w/ base and fuel holder (Fuel Only)

WI12LU Walco Idol Urn 12 Liter
3.2 Gal. w/ base and fuel holder

WI19LU Walco Idol Urn 19 Liter
5 Gal. w/ base and Fuel holder

WICUKIT Heating Plate
Spring Loaded w/Controller 120V/ 300W/
2.5 Amp. 6' cord
For use with WI12LU and WI19LU

NEW



*Walco Idol*TM COLLECTION



WI12JD Juice Dispenser, 10 liter (10.5 Qt)

- Polycarbonate body and stainless steel top
- For use with cold beverages only
- Ice tube to keep juice cold
- Matching stand for Idol Collection



WI8CD Cereal Dispenser, 9 liter (9.5 Qt)

- Polycarbonate body and stainless steel top
- Portion controlled by paddle wheel

Champion Series™

The Champion Series chafers are the latest clamshell styles at more affordable prices. They are manufactured in high end 18/10 stainless construction in a Korean factory. They are stand only chafers that are heated with canned fuel or electric units only (NO INDUCTION). The covers have tension and will hold the position they are maneuvered to.



CH8QTRE Rectangular 8 Qt Hinged Chafer.
Features full size standard 8 QT food pans



NOTE: ELECTRIC UNITS AVAILABLE
ELUNIT Heating Plate attaches by patented magnetic system, 120 volts/560 watts/4.2 amps
For use with CH8QTRE.



CH6QTRD Round 6 Qt Glass Top Chafer w/porcelain insert
Features stylish see thru glass lid and a porcelain insert is standard!

CH6PP Round 6 Qt Porcelain Food Pan
CH6SSP Round 6 Qt Stainless Pan



NOTE: ELECTRIC UNITS AVAILABLE
ELUNITTRI Heating Plate attaches by patented magnetic system, 120 volts/300 watts/2.5 amps
For use with CH6QTRD.





Satellite™ 18/10 Stainless

54130G Round Chafer, 6 Qt. ~ Gold Legs & Handles

54130CR Round Chafer, 6 Qt. ~ All Stainless Look



Grandeur™ 18/10 Stainless

54120CR Rectangular Chafer 8 Qt. ~ All Stainless Look

54120G Rectangular Chafer 8 Qt. ~ Gold Legs & Handles



52617G Coffee Urn 3 Gal. Gold Knobs



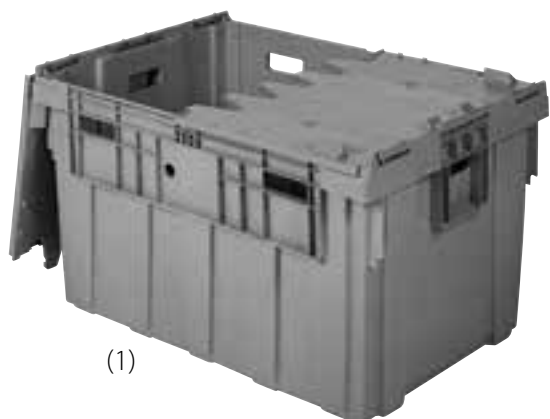
FOR USE WITH URN AT LEFT
52617CUKIT Heating Plate
Spring Loaded w/Controller 120V/
300W/2.5 Amp. 6' cord



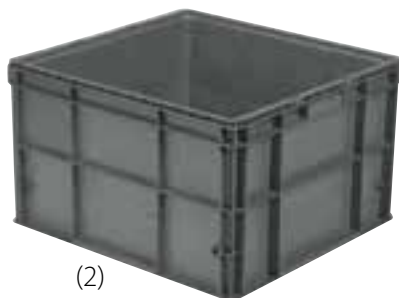
NOTE: ELECTRIC UNITS AVAILABLE
ELUNIT Heating Plate attaches by
patented magnetic system,
120 volts/560 watts/4.2 amps
For use with 54130 and 54120.

CHAFER STORAGE CONTAINERS

- Protect any of your chafers with these hard plastic containers
- Call for suggested container.



(1)



(2)



(3)

- (1) BOXLG01 Large Rectangular Chafing Dish Container with Attached Lid, 34" x 24"
- (2) BOXRD02 Round Chafing Dish Container Modular Stacking System, MSS, 24" x 22"
- (3) BOXLID02 Injection Molded Lid, 24" x 22" for BOXRD02 Container
- (4) BOXDOLYY04 Specialty Dolly, 24" x 22" w/3" Casters
(used with BOXRD02, only).



(4)

B U F F E T

U L T R A TM

The classic rim design in long handled 18/10 stainless buffetware is manufactured to Hotel Weight standards for long hard use and polished to a mirror finish. The 10% nickel content guarantees it will hold its shine and keep the look of silver.

18/10 is the best stainless available.

(See UltraTM 18/10 flatware on page 14)

- A UL-011 Soup Ladle, 11.75" length
- B UL-012 Solid Serving Spoon, 10.5" length
- C UL-014 Meat Fork, 10.5" length
- D UL-015 Wide Bottom Spoon, 9.5" length
- E UL-125 Long Handle Spoon, 13.25" length
- F UL-126 Long Handle Slotted Spoon, 13.25" length
- G UL-414 Carving Knife, 11" length
- H UL-022 Pastry Server, 9.5" length
- I UL-027 Cake/Pie Server, 10.25" length
- J UL-028 Long Handle Fork, 13.25" length
- K UL-029 Punch Ladle, 13.25" length
- L UL-7223 Ice Tongs, 6" length
- M UL-7225 Small Tongs, 8" length
- N UL-7253 Serving Tongs, 8.25" length

W A R E



ROYAL DANISH COLLECTION™

Walco presents a line of hollow handled buffetware. These 18/10 stainless steel utensils have been designed with molded handles for a comfortable grip. Mirror finish.

- A WLB01 Solid Serving Spoon, 12" length
- B WLB02 Slotted Serving Spoon, 12" length
- C WLB03 Notched Serving Spoon, 12" length
- D WLB04 Deep Ladle, 12" length
- E WLB05 Pastry Server, 11" length
- F WLB06 Pie Server, 12" length
- G WLB07 Cold Meat Fork, 10.5" length
- H WLB08 Pot Fork, 11.5" length
- I WLB09 Ladle w/spout, 1 oz., 12" length
- J WLB10 Lg Ladle w/spout, 2 oz., 12.5" length
- K WLB11 Cheese Plane, 11" length
- L WLB12 Slicer, 9" blade, 13.5" length
- M WLB13 Carving Knife, 9" blade, 13" length
- N WLB14 Perforated Turner, 14.5" length





- A VCB511 Double Wall Champagne Bucket w/ stand
Double wall insulated stainless steel minimizes condensation.
Holds 2 bottles
Dimensions 12-1/2" L x 12-1/2" W x 34-1/2" H



- B VCBH12 Double Wall Champagne Bucket w/ holder
Double wall insulated stainless steel minimizes condensation.
Holds 1 bottle
Dimensions 10-3/8" L x 9-3/4" W x 21" H



- C VCC14 Double Wall Champagne Cooler
Double wall insulated stainless steel minimizes condensation.
Holds 1 bottle
Dimensions 4-5/8" Dia. x 7-7/8" H



- D VT15 Amenity Tray
Silicon feet keeps tray from sliding.
Dimensions 10-3/4" L x 6-5/8" W x 1/2"H



- E VTSM16 Bar Tray w/ Silicone Mat
Stainless steel gallery tray style rim
Includes removable silicon mat (VBMAT)
with non-skid surface
Dimensions OD 15 1/2"



- F VBMAT Silicone Replacement Mat 13"
For use with VTSM16 and O-U340

IronStone™ Holloware

Ironstone™ is Walco's popular upscale hammered finish flatware design.

The dimpling creates a sparkling appearance and hides fingerprints.

This collection of high quality stainless steel includes buffetware and holloware.



Ironstone™ is found on page 13.

VS2326 2pc Square Buffet Risers
Set includes one 9" riser and one 10-1/4" riser.



VS1120 Set includes one 4-1/4" riser, one 5-1/2" riser,
one 6-3/4" riser and one 8" riser.



IronStone™ Buffetware 18/10

Classic 17th century hammered design with mirror finish.
The dimpling hides fingerprints well and creates a sparkling appearance
that looks great under any light.

Ironstone™ is Walco's popular upscale
hammered finish flatware design
found on page 13.



IR-009 1oz Sauce Ladle w/spout, 12.25"



IR-012 Solid Serving Spoon, 11"



IR-015 Wide Bottom Spoon, 9.5"



IR-022 Pastry Server, 9.5"



IR-125 Long Handle Spoon, 13.25"

IR-126 Long Handle Slotted Spoon, 13.25"



Vanguard™ Collection

Luxurious Club & Hotel Quality in 18/10

HX611 Coffee Pot, 34 oz

HX622 Water Pitcher, 68 oz

HX628 Milk Jug, 5 oz

Walco presents this classic Italianate holloware collection made from 18/10 stainless steel with a long lasting finish. Soprano has a true gooseneck spout preferred for total accuracy in pouring. Argon welds ensure against leaks. All holloware covers have durable five knuckle hinges that allow the covers to open a full 180°, lying completely flat during washing . . . no chance of damage. Hollow handles protect user while handling hot beverages.

Water Pitcher
CX522G 70 oz w/ Ice Guard
CX522 70 oz w/o Ice Guard



Coffee Server
CX511 70 oz
CX513 30 oz
CX514 18 oz
CX515 12 oz



Tea Pot
CX519 20 oz
CX520 12 oz

The Soprano™ Collection

Also Available in Silverplate

mirror

Creamer
CX528 5 oz w/o Lid, w/Handle
CX528L 5 oz w/Lid, w/Handle
CX528XH 5 oz w/o Lid, w/o Handles
CX526 12 oz w/o Lid, w/Handle



Sugar Bowl
CX529L 10 oz w/Lid
CX529 10 oz w/o Lid



Sugar Packette Holder
O-U301RM

SATIN SOPRANO™ HOLLOWARE

Full brushed Satin finish to accompany Satin finish flatware patterns and other decor items with like finishes.



Water Pitcher

CX522GB 70 oz w/ Ice Guard
CX522B 70 oz w/o Ice Guard



Coffee Server

CX511B 70 oz
CX513B 30 oz
CX514B 18 oz
CX515B 12 oz



Tea Pot

CX519B 20 oz
CX520B 12 oz

satin



Creamer

CX528B 5 oz w/o Lid
CX528LB 5 oz w/Lid
CX526B 12 oz w/o Lid



Sugar Bowl

CX529LB 10 oz w/Lid



O-U307M Roll Tray, 10.8" L x 6.3" W



O-U322 Bread Tray, 12" L x 6.7" W



O-U471-R
Wine Bottle Cooler Only

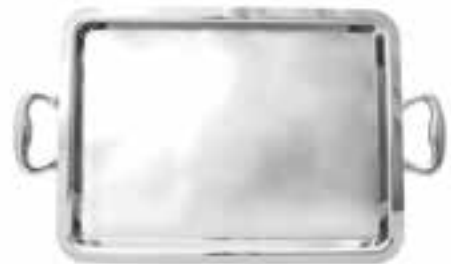
O-U480-S
Wine Cooler Stand Only
In 18/10 Stainless, this heavy duty wine cooler
is weighted . . . will not tip.



O-U360

SOPRANO™ Hotel Trays

- O-U360 9" x 5" Tip/Sugar & Cream Tray, Heavy 18/10 SS
- O-U661 12" x 10" Tray, Heavy 18/10 SS
- O-U662 15" x 11" Tray, Heavy 18/10 SS
- O-U664 20" x 14" Tray, Heavy 18/10 SS
- O-U664H 20" x 14" Tray WITH HANDLES, Heavy 18/10 SS
- O-U665 22" x 17" Tray, Heavy 18/10 SS
- O-U666 24" x 18" Tray, Heavy 18/10 SS
- O-U668 30" x 20" Tray, Heavy 18/10 SS



O-U664H



Sauce Boat
O-U305 5 oz
O-U309 9 oz
O-U315 15 oz

SOPRANO™ Round Trays 18/10

- 9-223 12" Round Tray
- 9-222 13" Gallery Tray
- O-U339 14.5" Tray
- O-U340 16" Tray
- VBMAT Silicone Replacement Mat
For use with VTSM16 and O-U340





O-U325 Bud Vase, 7.4" H

The SopranoTM Collection

Also Available in Silverplate



O-U481 Punch Bowl, 4 Gallon Bowl
16.7" W x 9.6" H
base 8.2" W



O-U342 Cake Stand
14" W x 5" H
base 5" W



O-U302 Supreme Bowl
3 7/8" H x 5" DIA
inner bowl 3 1/4" DIA



583L 3 Tiered Tray Stand
15.7" H x 11.2" W
trays 9" DIA



O-U440 Oval Tray, 20.8" L x 14.5" W

SATURN™ HOLLOWARE COLLECTION

18/10 Stainless in satin finish for hotel or restaurant use.

Saturn's classic coffee pot outline features a gooseneck spout for ease and accuracy in pouring.



Covered Server
9-212 12 oz



Tea Pot
9-236AW 12 oz w/o Base
9-237AW 21 oz w/o Base



Water Pitcher
9-218G 70 oz w/Ice Guard
9-218 70 oz w/o Ice Guard



Coffee Server
9-235AW 70 oz w/o Base
9-232AW 21 oz w/o Base
9-231AW 12 oz w/o Base



Sugar Bowl
9-201LBX 8 oz w/Lid
9-201BX 8 oz w/o Lid
9-201-LD 8 oz Lid only



Creamer
9-202BX 8 oz
9-214 12 oz

TABLETOP SERVING TONGS



Pastry Tongs
74149 9"
74150 7"



Salad Tongs
74151 10"

V E N U STM

HOLLOWARE COLLECTION

18/10 stainless in mirror finish. These items are argon welded for heavy hotel banquet use.



Coffee Server

P-XC384 60 oz w/o Base

P-C382 20 oz w/Base

P-C381 12 oz w/Base



Tea Pot

P-T381 12 oz



Water Pitcher

P-XW389G 60 oz w/Ice Guard



Creamer

P-Z404 8 oz

P-WC391 Covered 12 oz



Sugar Bowl

P-Z403L 8 oz w/Lid

P-Z403LD 8 oz Lid only

P-Z403 8 oz w/o Lid

T R A Y S

Made from stainless steel from India with rolled edges for added durability. An excellent value and dependable quality.



14/0 Circle Center Tray

72180 • 18"

72160 • 16"

72140 • 14"

72120 • 12"



18/10 Oval Tray

O-U20 20 1/16" x 14 11/16"

O-U14 14 1/8" x 10 3/16"

O-U18 18 1/8" x 13 3/16"

O-U12 12 3/16" x 8 11/16"

O-U16 16 5/16" x 11 3/16"

WALCO STEAK KNIVES

We have one of the largest selections of steak knives in the industry to meet your specific needs. The finest Pakka Wood in standard and jumbo sizes are the top of the line. Numerous size hardwood and polypropylene handles round out the collection.





Polypropylene 620527

UTICA II™ 660537
Hardwood

Hardwood 640527

Hardwood 630527

Hardwood 630528

INDESTRUCTABLE II™ 840522
Satin Stainless Steel

Pakka Wood 860527

Pakka Wood 850527

Rosewood 840525

Hardwood 840527



Hardwood 840527



Hardwood 830527



Delrin™ Plastic 880528



HIGHPLAINS™ 93055
Fine Edge (Delrin™ Plastic)



MASTER™ 980527
Delrin™ Plastic



Pakka Wood 950527



Delrin™ Plastic 880528R



Polywood 840526R



Pakka Wood 950529



BIG RED™ 840529R
Polywood



BUCKSTAG™ Delrin™ Plastic
930529



SON OF ULTIMATE™ 880526
Stainless Steel
(Frost Finish Handles)



PARISIAN™ Knife 800152
(Delrin™ Plastic)



HUNTER™ Knife 940528
(Delrin™ Plastic)



DENVER CHOP™ KNIFE 670528
Pakka Wood



BOSTON CHOP™ KNIFE 670527
Delrin™ Plastic



ULTIMATE™ Stainless Steel 880527
(Frost Finish Handles)

CUSTOMIZATION

4 DOZEN MINIMUM

Walco customizes jumbo handle steak knives on the blade, the handle or both. Having the establishment name or logo on the knife increases the ambiance of the tabletop and adds to the prestige of the restaurant. Available in attractive display boxes, they make appealing gifts. With Walco's low minimum order of only 4 dozen, it is easy to get started. Walco offers a wide variety of steak knives to suit your needs.

ULTIMATE™ Stainless Steel 880527R
(Frost Finish Handles)

ULTIMATE™ Stainless Steel 880527M
(Mirror Finish Handles)

SEMI™ Stainless Steel 0923

ROYAL BRISTOL™ Stainless Steel 5123

HYANNIS™ Stainless Steel 4922

SONNET™ Stainless Steel 8223

CLASSIC BEAD™ Stainless Steel 9222

LANCER™ Stainless Steel 9422

SENTRY™ Stainless Steel 9522

ULTRA™ Stainless Steel 9622

PRIM™ Stainless Steel 9722



71GIFT4B 4 Piece box, for jumbo handled knife

71GIFT1B 1 Piece box, for jumbo handled knife



71GIFTCP 4 Piece box, for Chop™ knife



71GIFTHP 4 Piece box, for High Plains™ knife



71GIFTPS 4 Piece box, for Parisian™ knife

SARATOGA™ Steak Knife Box

Luxurious dark stained Chinese hardwood box with inserts for 4 Walco jumbo handle or chop knives for the finest gift offering for your custom logo knives.

71-WGIFT4J Jumbo Steak Knives

71-WGIFT4BC Chop Knives





WALCO'S Barclay™ CHILD'S FLATWARE

Children need smaller flatware pieces and now Walco makes them available for foodservice use.

Teaspoons, forks and knives are available.



BARCLAY™ 18/0



ROYAL BRISTOL CHEESE KNIFE

- Hollow Handle Pistol Grip
- Perfect serration for hard or soft cheese
- Fork tip to pick up sliced cheese

ROYAL BRISTOL™ 18/0
5127



18/10 Stainless Flatware

Available in silverplate

18% chrome 10% nickel stainless is a European standard. The nickel content ensures resistance to staining and shines like silver for the life of the product. The flatware is grade rolled to give items tensile strength and balance. The knives are electropolished to bring more chromium to the surface for greater resistance to staining. The knives are made of 420 type stainless so a cutting edge can be maintained.

- The larger European forks and knives are designed to accompany 10 3/4" and larger plate sizes.

American sizes are also available.

* Available in European place settings.



SEMI™ 18/10 *



STAR™ 18/10 *



WALCO

18/10 Stainless Flatware



ERIK™ 18/10 *



NAPA™ 18/10 *



HYANNIS™ 18/10 *

ILLUSTRA™ 18/10 ✱



PACIFIC RIM™ 18/10 ✱



ART DECO™ 18/10 ✱

GODDESS™ 18/10 ✱





18/0 Stainless Flatware

18% chrome stainless flatware has 38% more chromium than 13% chrome. Since 1984 Walco has used nothing less than 18% chrome for all forks and spoons. Our heavy weight and medium weight quality patterns are machine finished for smooth, polished surfaces. Fork tines and spoon bowls are graded for added tensile strength and balance.



The knives are 420 type stainless and electropolished. All 18% chrome patterns are magnetic, providing the opportunity to protect your flatware investment with the use

of magnetic retrieval systems. Our selection of 18/0 patterns show our heaviest, higher end patterns first followed by our more economical offerings.

* Available in European place settings.



FREYA™ 18/0 *



BOSA NOVA™ 18/0 *

SAVILLE™ 18/0 *



NEW

ORBITER™ 18/0 ✱

SONNET™ 18/0



DANISH PRIDE™ 18/0





COLGATE™ 18/0 ✱



LISBON™ 18/0 ✱



METEOR™ 18/0 ✱



MARCIE™ 18/0 ✱



CAMELOT™ 18/0 ✱



COPENHAGEN™ 18/0

✱ Available in European place settings.



SHOWBOAT™ 18/0



PARISIAN™ 18/0 ✱

IMAGINATION™ 18/0



DISCRETION™ 18/0

BALANCE™ 18/0*

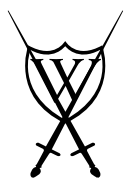


CLASSIC SCROLL™ 18/0

BARONY™ 18/0 ✱



PATRICIAN™ 18/0



WALCO

18/0 Stainless Flatware

✱ Available in European place settings.



OLD COUNTRY™ 18/0



ACCOLADE™ 18/0



FANFARE™ 18/0 ✱

✱ Available in European place settings.



BENGAL™ 18/0

Made in Bangladesh which has a *Least Developed Country* status with the United States Government. Some solicitations or bids by US government and military facilities will allow product from countries with *Least Developed Country* status.



WINDSWEPT™ 18/0



DERBY™ 18/0



WINDSOR SUPREME™ 18/0*



STREAMLINE™ 18/0



MONTEREY™ 18/0



POISE™ 18/0



BEACON™ 18/0



ROYAL BRISTOL™ 18/0 ✱

✱ Available in European place settings.



MARK™ 18/0

OLDE TOWNE™ 18/0

BARCLAY™ 18/0

STARS & STRIPES™ 18/0
PATENTED

WINDSOR 18/0
MEDIUM & HEAVY WEIGHT

DOMINION 18/0
MEDIUM & HEAVY WEIGHT

#45 Accolade™ 18/0	•	01 Teaspoon	945 Children's Dinner Knife, 6 3/4"
#80 Art Deco™ 18/10	•	02 European Dessert Spoon	905 Cliden's Dinner Fork, 5 3/4"
#79 Balance™ 18/0	•	03 Serving Spoon	901 Children's Teaspoon, 5 1/8"
#11 Barclay™ 18/0	•	04 Iced Teaspoon	42 Stand Up Dinner Knife
#90 Barony™ 18/0	•	04 Long Salad Fork	45N 1-Pc Knife, 9"
#67 Beacon™ 18/0	•	05 Dinner Fork	451 Knife, European
#18 Bosa Nova™ 18/0	•	051 European Fork	45 Knife, 1-Pc
#39 Camelot™ 18/0	•	054 Dinner Fork, 4 Tine	43 Knife, 1-Pc
#34 Classic Scroll™ 18/0	•	06 Salad Fork	38 Lg Bowl Bouillon Soup
#27 Colgate™ 18/0	•	06 Large Salad Fork	29 Demitasse Spoon
#43 Copenhagen 18/0	•	07 Dessert Spoon	25 Knife, Hollow Handle
#54 Danish Pride™ 18/0	•	10 Butter Spreader	24 1-Pc Knife, Light
#47 Derby™ 18/0	•	11 Butter Knife	23 Steak Knife, Hollow Handle
#65 Discretion™ 18/0	•	12 Bouillon Spoon	22 Steak Knife
#74 Dominion Medium Weight 18/0	•	15 Cocktail Fork	20 1-Pc Knife, Plain
#87 Dominion Heavy Weight 18/0	•	16 Butter Knife	15 Cocktail Fork
#12 Erik™ 18/10	•	17 Butter Knife	12 Bouillon Spoon
#28 Fanfare™ 18/0	•	18 Butter Knife	11 Butter Knife
#06 Freya™ 18/0	•	19 Butter Knife	10 Butter Spreader
#21 Goddess™ 18/10	•	20 Butter Knife	07 Dessert Spoon
#49 Hyannis™ 18/10	•	21 Butter Knife	06 Large Salad Fork
#91 Illustra™ 18/10	•	22 Butter Knife	06 Salad Fork
#88 Imagination™ 18/0	•	23 Butter Knife	054 Dinner Fork, 4 Tine
#35 Lisbon™ 18/0	•	24 Butter Knife	051 European Fork
#71 Marcie™ 18/0	•	25 Butter Knife	05 Dinner Fork
#TR Mark™ 18/0	•	26 Butter Knife	04 Long Salad Fork
#70 Meteor™ 18/0	•	27 Butter Knife	04 Iced Teaspoon
#29 Monterey™ 18/0	•	28 Butter Knife	03 Serving Spoon
#81 Napa™ 18/10	•	29 Butter Knife	02 European Dessert Spoon
		30 Butter Knife	01 Teaspoon

[illegible]

NOTES:

Everybody needs this! Orfitertm - page 51
Casino's?



Check out Copenhagentm, page 59



call for samples!





www.walcostainless.com

820 Noyes Street • P.O. Box 10527 • Utica, New York 13503-1527

800 879-2526 • Phone 315 733-4663 • Fax 315 733-6602

e-mail sales@walcostainless.com

