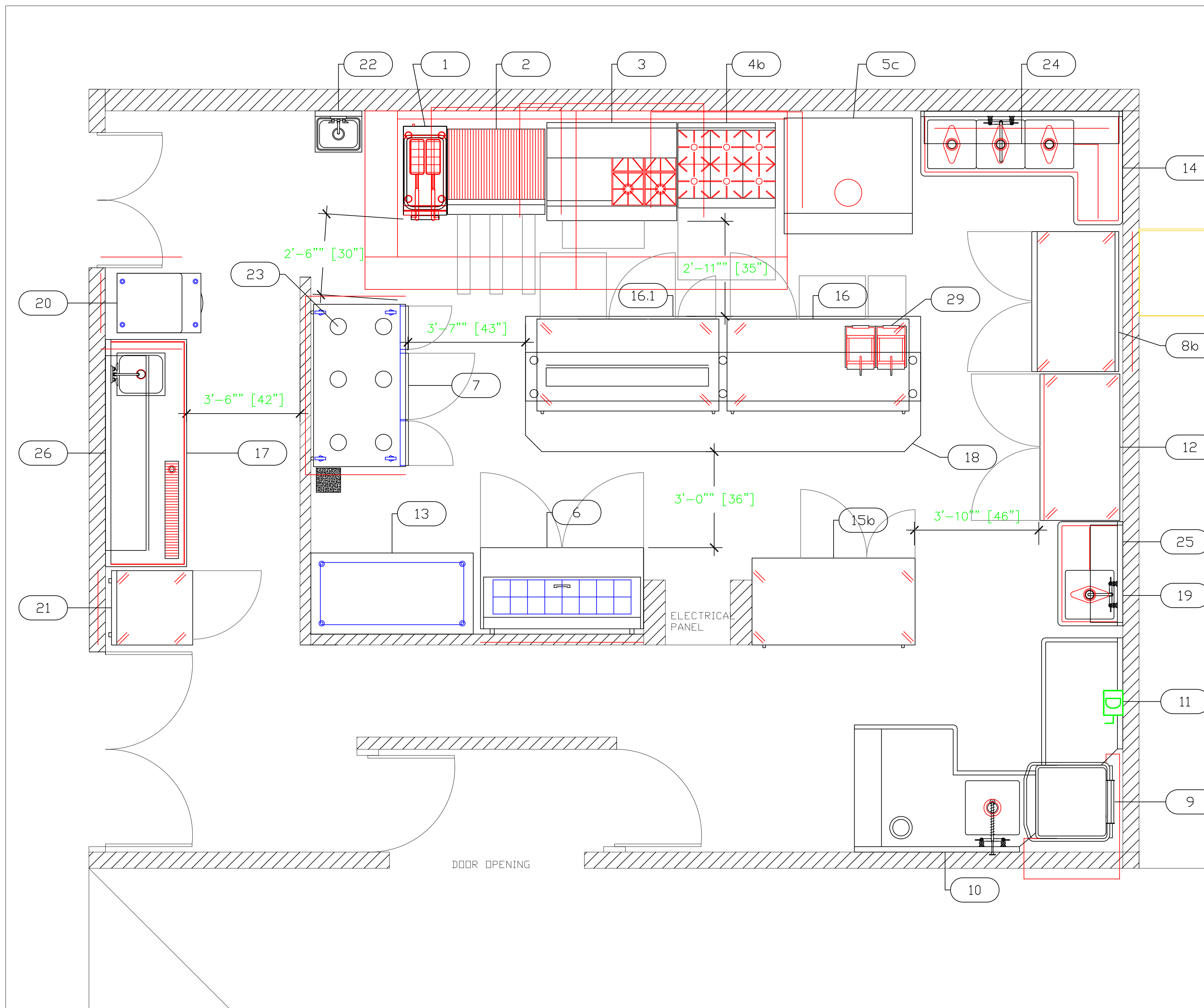


EQUIPMENT SCHEDULE					
ItemNo	Category	Mfr	Model	Quantity	Equipment Remarks
1	Gas Floor Fryer	Electrolux	169109	1	Existing
2	Charbroiler, Gas, Countertop	Electrolux	169121	1	Existing
3	Range, 48", 4 Burners, 24" Griddle	Vulcan	48S-4B24G	1	Existing
4b	Hotplate, Countertop, Gas	Electrolux	169103	1	
5c	Stone Hearth Oven, Gas	Wood Stone	WS-BL-4836-RFG-L	1	
6	Sandwich / Salad Preparation Refrigerator	Turbo Air	MST-60	1	Existing
7	Refrigerated Work Top	Continental Refrigerator	CRA60	1	
8b	Reach-In Refrigerator	Turbo Air	M3R47-2	1	
9	Dishwasher, Door Type, Ventless	Jackson WWS	TEMPSTAR VENTLESS	1	
10	Soiled Dishtable	Inox	DTS-D70-48R	1	
	Faucet	Krowne	17-108WL	1	
11	Clean Dishtable	Inox	DTC-S70-48L	1	
12	Reach-In Freezer	True	T-49F-HC	1	Existing
13	Work Table, Stainless Steel Top	Advance Tabco	MS-305	1	
14	Three (3) Compartment Sink	Advance Tabco	FC-3-1818-18R	1	
	Faucet	Krowne	14-814L	1	
15b	Reach-In Undercounter Freezer	True	TUC-60-32F	1	
16	Reach-In Undercounter Refrigerator	Continental Refrigerator	CRA68-U	1	
16.1	Reach-In Undercounter Refrigerator	Continental Refrigerator	CRA68-U	1	
17	Beverage Counter	Inox	BEV-30-84R	1	
	Faucet	Krowne	14-401L	1	
18	Chef's Table	Inox	CHEF TABLE	1	
	Heater	Nemco	6151-60	1	
19	One (1) Compartment Sink	Advance Tabco	FC-1-1818-18L	1	
	Faucet	Krowne	14-808L	1	
20	Ice Cuber	Ice-O-Matic	ICE0520HA	1	
	Bin	Ice-O-Matic	B42PS	1	
21	Refrigerated Work Top	Turbo Air	TWR-28SD	1	
22	Hand Sink	Advance Tabco	7-PS-66-1X	1	
23	Decorative Lamp	Hatco	DL-400	6	
24	Overshelf	Inox	PS-12-72	1	
25	Shelving, Wall-Mounted	Inox	WS-12-36	1	
26	Wall Cabinet	Inox	WCH-15-72	1	
27	Food Slicer, Electric	Globe	E300	1	
28	Commercial Food Blender	Vitamix	62827	1	
29	Sandwich / Panini Grill	Globe	GPGDUE10	1	
98	Freight	UNI	FREIGHT	1	
99	Installation	UNI	INSTALL	1	



EQUIPMENT LAYOUT

All Dimensions to be verified on the job site. Actual locations for floor drains, and any ventilating equipment to be determined by Engineer. Mechanical, Plumbing & Electrical to be checked and verified by Customers MEP Engineer. Remote Condensing Units to be located by Architect. Exhaust & Supply fans to be located by Architect.

Gansevoort
Zest Beach Kitchen
Providenciales T&C



INTERNATIONAL INC.

2055 W 73rd Street, Miami, FL 33016
 Ph: (305)826-8696 Fax: (305)826-9131

No.	Revision/Issue	Date
2	Updated Layout after Site visit	9-2-17
3	Final Changes with Order	9-26-17
4	Updated Manufacturers	9-28-17
5	Added MEP Information	10-5-17

Date
Oct 05, 2017
 Drawn By
Dayne Gauntlett
 Scale
1/2" = 1'0"

Sheet
ZK-1