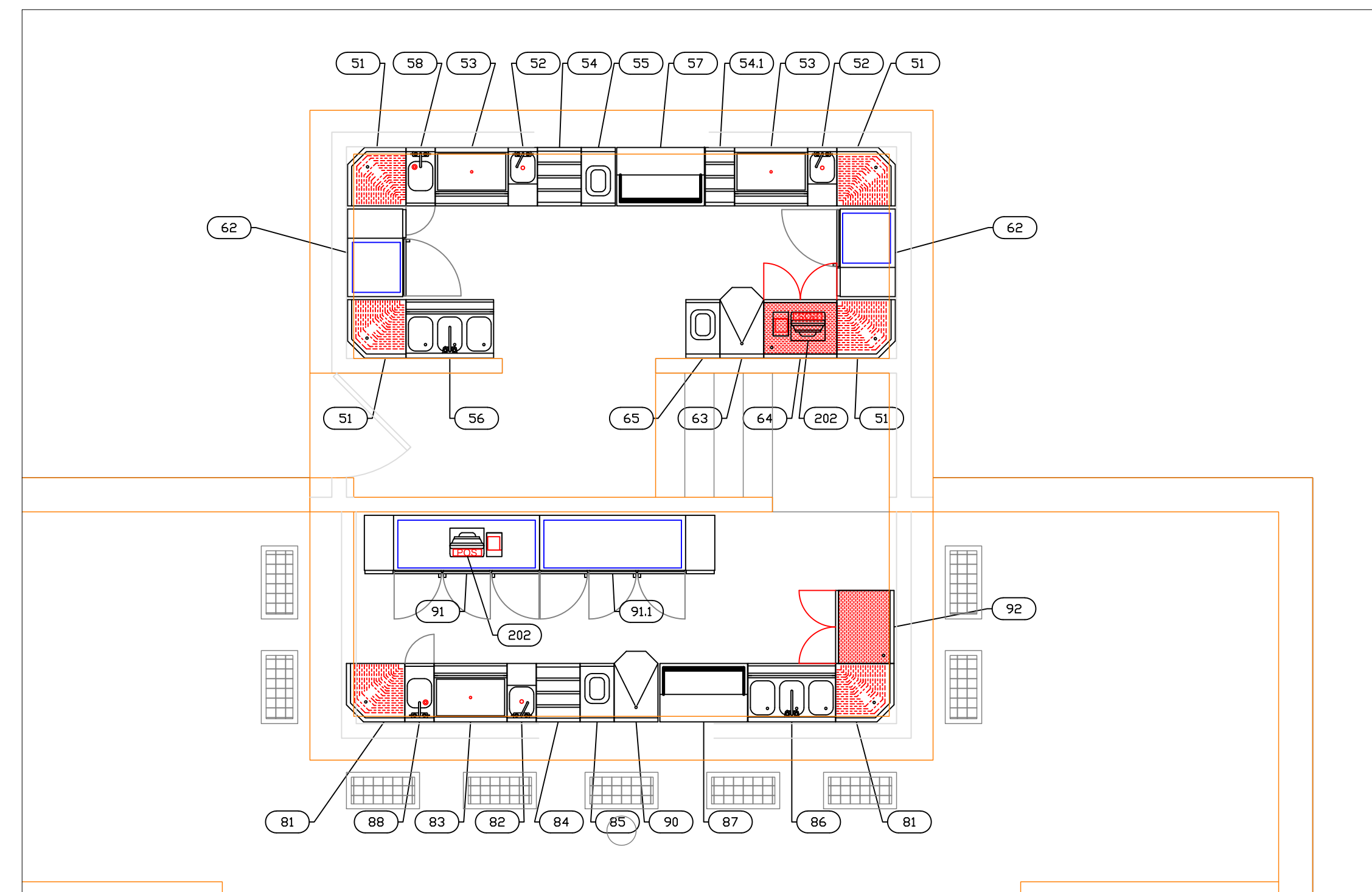
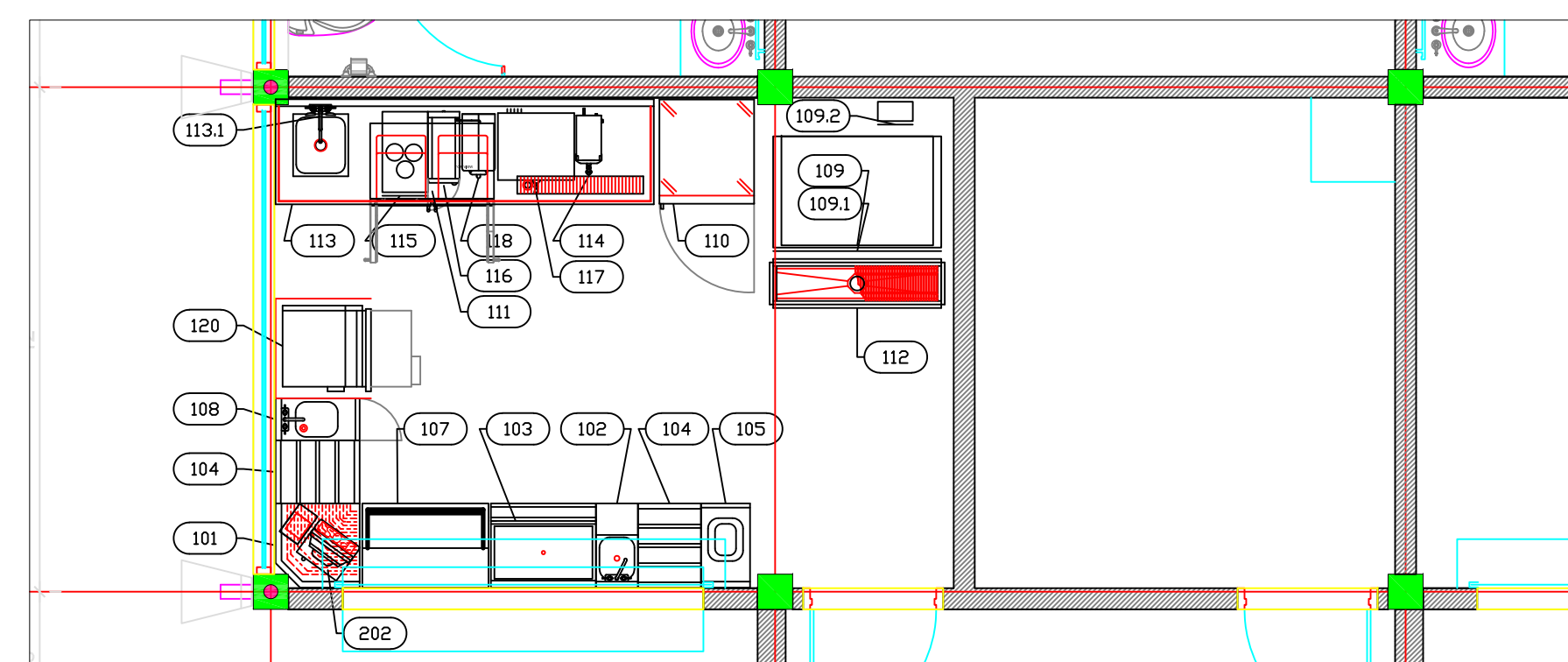


Building B Roof Top Bar



Poolside Bars



Beach & Pool Service Bar

EQUIPMENT SCHEDULE					
ItemNo	Category	Mfr	Model	Quantity	Equipment Remarks
1	Spare Number				
2	Blender Station	Krowne	KR18-12BD	1	
3	Ice Bin	Krowne	KR18-30	1	
4	Bottle Display	Krowne	KR18-24RD	1	
5	Underbar Add-On Unit	Krowne	KR18-T12	1	
6	Underbar Sink Units	Krowne	KR18-33C	1	
7	Bottle Cooler	Krowne	BC36-SS	1	
8	Hand Sink	Krowne	KR18-SD12C	1	
9	Back Bar Cabinet, Refrigerated	Krowne	BS60L	1	
10	Back Bar Cabinet, Refrigerated	Krowne	BS60R	1	
11	Back Bar Cabinet, Non-Refrigerated	Krowne	KR-L24	1	
12-20	Spare Number				
23-50	Spare Number				
51	Corner Angle Filler	Krowne	KR18-DRC90	4	
52	Blender Station	Krowne	KR18-12BD	2	
53	Ice Bin	Krowne	KR18-30	2	
54	Bottle Display	Krowne	KR18-18RD	1	
54.1	Bottle Display	Krowne	KR18-12RD	1	
55	Underbar Add-On Unit	Krowne	KR18-T14R	1	
56	Underbar Sink Units	Krowne	KR18-33C	1	
57	Bottle Cooler	Krowne	BC36-SS	1	
58	Hand Sink	Krowne	KR18-SD12C	1	
59-61	Spare Number				
62	Back Bar Cabinet, Refrigerated	Krowne	BS36R	2	
63	Blender Station	Krowne	KR18-18FD	1	
64	Storage Cabinet	Krowne	KR18-SD30	1	
65	Underbar Add-On Unit	Krowne	KR18-T14R	1	
66-80	Spare Number				
81	Corner Angle Filler	Krowne	KR18-DRC90	2	
82	Blender Station	Krowne	KR18-12BD	1	
83	Ice Bin	Krowne	KR18-30	1	
84	Bottle Display	Krowne	KR18-18RD	1	
85	Underbar Add-On Unit	Krowne	KR18-T14L	1	
86	Underbar Sink Units	Krowne	KR18-33C	1	
87	Bottle Cooler	Krowne	BC36-SS	1	
88	Hand Sink	Krowne	KR18-SD12C	1	
89	Spare Number				
90	Blender Station	Krowne	KR18-18FD	1	
91	Back Bar Cabinet, Refrigerated	Krowne	NS72L	1	
91.1	Back Bar Cabinet, Refrigerated	Krowne	NS72R	1	
92	Storage Cabinet	Krowne	KR18-SD30	1	
93-100	Spare Number				
101	Corner Angle Filler	Krowne	KR18-DRC90	1	
102	Blender Station	Krowne	KR18-12BD	1	
103	Ice Bin	Krowne	KR18-30	1	
104	Bottle Display	Krowne	KR18-18RD	2	
105	Underbar Add-On Unit	Krowne	KR18-T14L	1	
107	Bottle Cooler	Krowne	BC36-SS	1	
108	Hand Sink	Krowne	KR18-SD12C	1	
109	Ice Cuber	Kold-Draft	GB1064AC	1	
109.1	Ice Bin for Ice Machines	Kold-Draft	KDB950	1	
109.2	Water Filtration System, Parts & Accessories	Antunes	CBE-TW	1	
110	Reach-In Refrigerator	True	T-23G-2-HC-FGD01	1	
111	Wine Cellar	Summit	SWC3668ADA	1	
112	Floor Trough	Advance Tabco	FFTG-1248	1	
113	Beverage Counter	Advance Tabco	BEV-30-108L	1	
113.1	Wall / Splash Mount Faucet	Krowne	14-401L	1	
114	Hot Water Dispenser	BUNN	43600.0003	1	Future
115	Espresso Cappuccino Machine	WMF	03.1900.0412	1	Future
116	Milk Chiller	WMF	03.9192.3001	1	Future
117	Coffee Brewer	BUNN	34600.0000	1	Future
118	Coffee Grinder	BUNN	35600.0022	1	Future
120	Glasswasher	Jackson WWS	DELTA 5-E	1	
123	Spare Number				
202	POS System	POS	POS	4	By Owner/Operator

EQUIPMENT LAYOUT

All Dimensions to be verified on the job site.
 Actual locations for floor drains, and any ventilating equipment to be determined by Engineer.
 Mechanical, Plumbing & Electrical to be checked and verified by Customers MEP Engineer.
 Remote Condensing Units to be located by Architect.
 Exhaust & Supply fans to be located by Architect.

Alaia Resort
Bars
 San Pedro, Belize

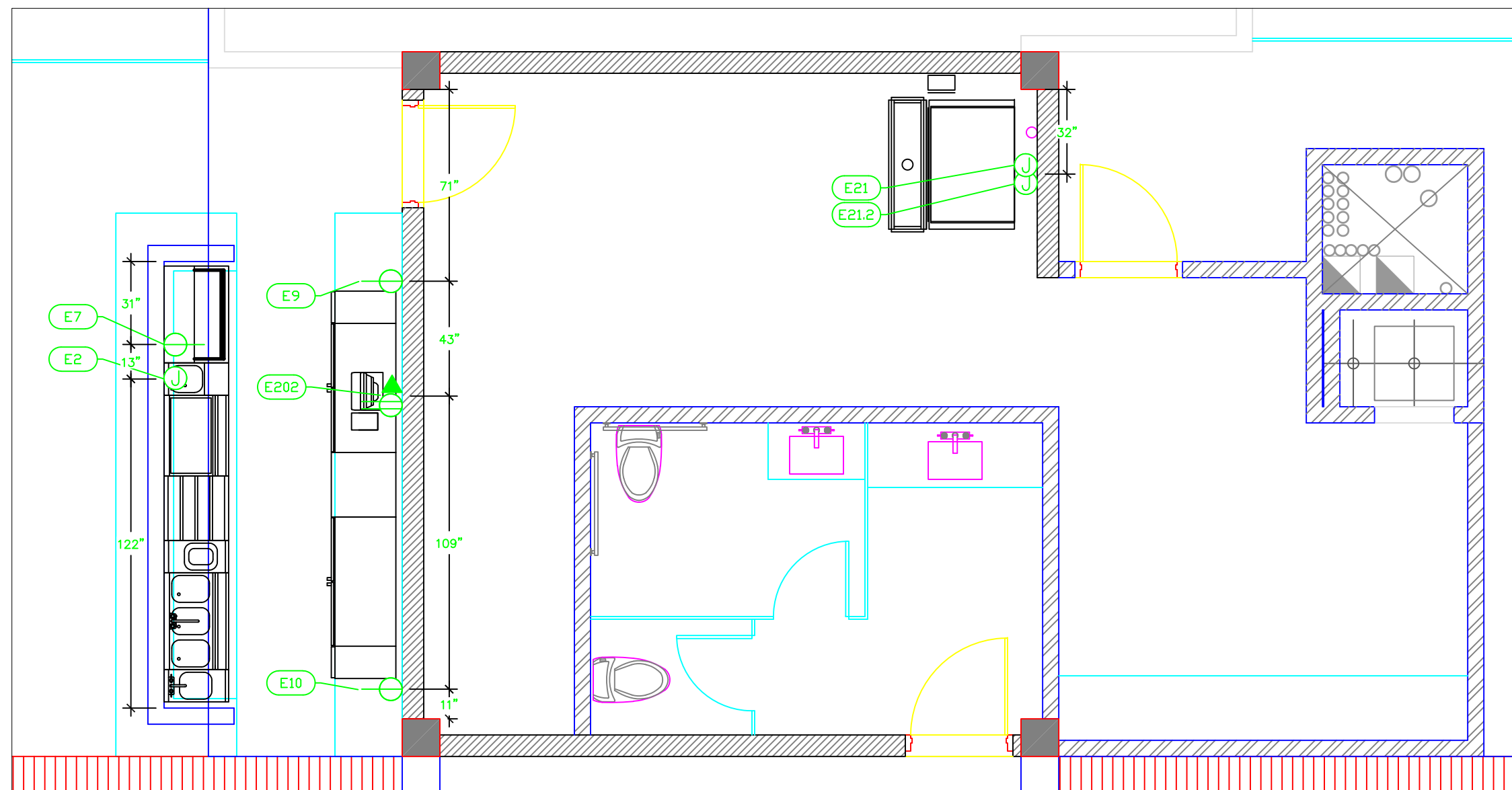


INTERNATIONAL INC.
 2055 W 73rd Street, Miami, FL 33016
 Ph: (305)826-8696 Fax: (305)826-9131

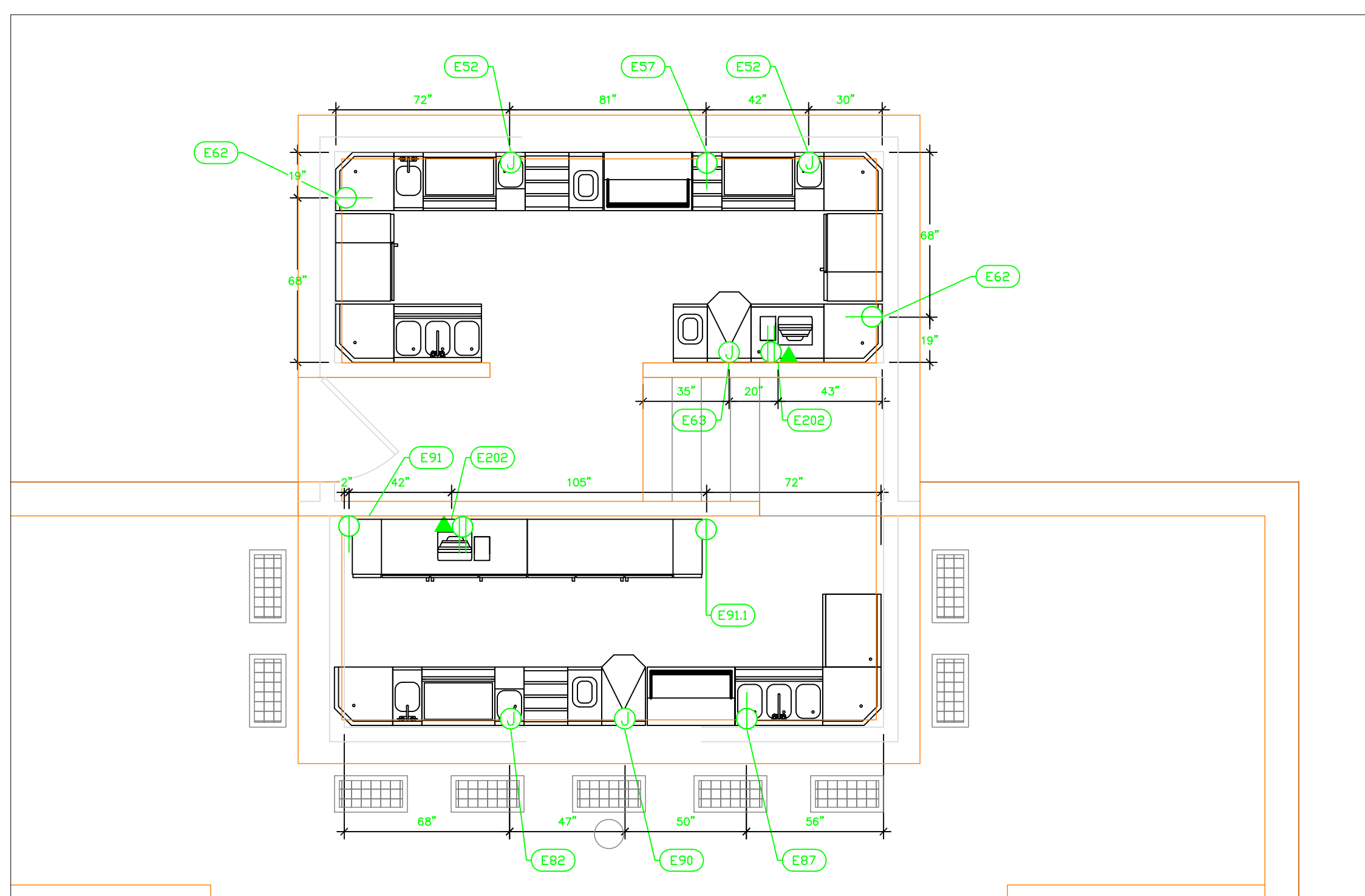
No.	Revision/Issue	Date
1	Preliminary Layout	7-17-18
2	MEP added	8-31-18
3	Updated Background	9-25-18
4	Updated Background on Service Bar.	11-7-18

Date
Nov 7, 2018
 Drawn By
Dayne Gauntlett
 Scale
1/4" = 1'0"

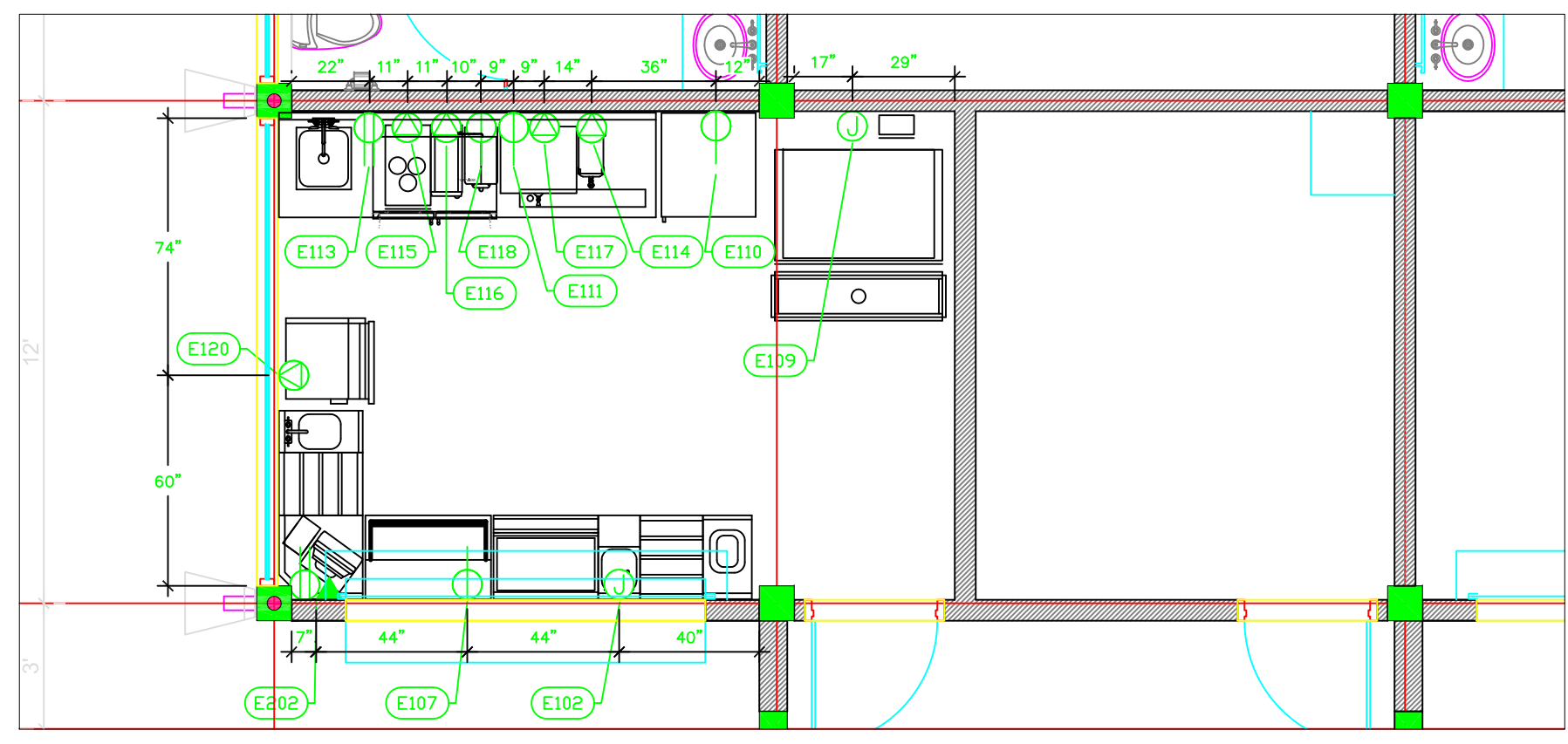
Sheet
AB-1



Building B Roof Top Bar



Poolside Bars

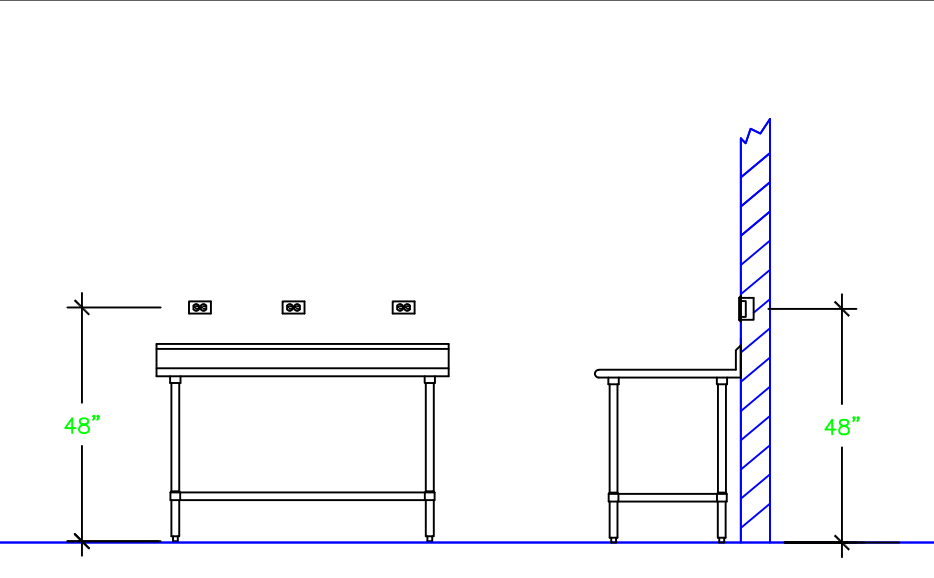


Beach & Pool Service Bar

ELECTRICAL SCHEDULE											
ItemNo	Category	Voltage	Cycle	Phase	Amps	Hp	NEMA	ConnectionType	Rough-In AFF	Quantity	Electrical Remarks
2	Blender Station	115	60	1	15			J-Box	14"	1	Connect to Outlet on Equipment
7	Bottle Cooler	115	60	1	4.0	1/5	5-15P	Simplex	14"	1	Do not plug into GFI outlet
9	Back Bar Cabinet, Refrigerated	115	60	1	6.0	1/4	5-15P	Simplex	18"	1	
10	Back Bar Cabinet, Refrigerated	115	60	1	6.0	1/4	5-15P	Simplex	18"	1	
21	Ice Cuber	208-230	60	1	11.0			J-Box	60"	1	
21.2	Ice Crusher	208-230	50/60	1	4.1			J-Box	60"	1	
52	Blender Station	115	60	1	15			J-Box	14"	2	Connect to Outlet on Equipment
57	Bottle Cooler	115	60	1	4.0	1/5	5-15P	Simplex	14"	1	Do not plug into GFI outlet
62	Back Bar Cabinet, Refrigerated	115	60	1	3.6	1/5	5-15P	Simplex	18"	2	
63	Blender Station	115	60	1	15			J-Box	38.5"	1	
82	Blender Station	115	60	1	15			J-Box	14"	1	Connect to Outlet on Equipment
87	Bottle Cooler	115	60	1	4.0	1/5	5-15P	Simplex	14"	1	Do not plug into GFI outlet
90	Blender Station	115	60	1	15			J-Box	38.5"	1	
91	Back Bar Cabinet, Refrigerated	115	60	1	6.0	1/4	5-15P	Simplex	18"	1	
91.1	Back Bar Cabinet, Refrigerated	115	60	1	6.0	1/4	5-15P	Simplex	18"	1	
102	Blender Station	115	60	1	15			J-Box	14"	1	Connect to Outlet on Equipment
107	Bottle Cooler	115	60	1	4.0	1/5	5-15P	Simplex	14"	1	Do not plug into GFI outlet
109	Ice Cuber	208-230	60	1	11.0			J-Box	60"	1	
110	Reach-In Refrigerator	115	60	1	2.2	1/3	5-15P	Simplex	18"	1	
111	Wine Cellar	115	60	1	1.25		5-15P	Simplex	18"	1	
113	Beverage Counter	115	60	1	15			Duplex	48"	1	Convenience Outlet See Note E1
114	Hot Water Dispenser	240	60	1	16.9			Special	48"	1	Electrician to provide Cord & Plug 6-30R
115	Espresso Cappuccino Machine	120	60	1	15		5-20P	Special	48"	1	
116	Milk Chiller	120	50/60	1	15			Special	48"	1	Electrician to provide Cord & Plug 5-20R
117	Coffee Brewer	120/240	60	1	27.5			Special	48"	1	Electrician to provide Cord & Plug 6-50R
118	Coffee Grinder	120	60	1	11	3/4	5-15P	Simplex	48"	1	
120	Glasswasher	115	60	1	16	1		Special	14"	1	Electrician to provide Cord & Plug 5-20R
202	POS System	115	60	1	15			Duplex	48"	4	Confirm Requirements with Owner
								DATA	48"	4	Confirm Requirements with Owner

LEGEND - ELECTRICAL CONNECTIONS

- DUPLEX RECEPT., 15-AMP, 120-VOLT, GROUND TYPE, HORIZONTAL MOUNT
- SIMPLEX RECEPT., 120-VOLT, GROUND TYPE, HORIZONTAL MOUNT
- SPECIAL PURPOSE OUTLET, GROUND TYPE, HORIZONTAL MOUNT
- JUNCTION BOX, DIRECT CONNECTION
- DISCONNECT SWITCH, DIRECT CONNECTION
- FLOOR/CEILING RECEPTACLE AS INDICATED
- (2) Telephone + (2) Data
- FIELD CONNECTIONS
- HARD WIRE CONNECTION POINT AT MACHINE



NOTE # E1
TYPICAL OUTLETS IN WALL ABOVE TABLE, BY ELECTRICIAN NOT TO SCALE

NOTE # E2
ALL NATIONAL, STATE, AND LOCAL CODES SHALL APPLY

NOTE # E3
ALL ELECTRICAL CONNECTIONS AND HARDWARE REQUIRED TO BE PROVIDED BY ELECTRICAL CONTRACTOR

NOTE # E4
ALL JUNCTION BOXES, OUTLETS, ETC. TO BE LOCATED SO AS TO NOT INTERFERE WITH EQUIPMENT

NOTE # E5
ALL RELAYS, CONTRACTORS, STARTERS, AND SWITCHES REQUIRED FOR EXHAUST & SUPPLY FANS TO BE PROVIDED BY ELECTRICAL CONTRACTOR UNLESS SPECIFIED

NOTE # E6
ELECTRICAL CONTRACTOR TO INTERCONNECT DISHMACHINE TO EXHAUST FAN FOR DISHMACHINE SO THAT THE FAN RUNS WHEN THE DISHMACHINE IS IN OPERATION.

NOTE # E7
ELECTRICAL CONTRACTOR TO INSTALL TABLE LIMIT SWITCH TO END OF CLEAN DISHTABLE TO THAT MACHINE STOPS WHEN SWITCH IS DEPRESSED.

NOTE # E8
ELECTRICAL CONTRACTOR TO CONNECT DRAIN LINE HEATER, PAN HEATER AND DDDR HEATER FOR WALK-IN FREEZER.

Equipment ELECTRICAL Service Requirements

All Dimensions to be verified on the job site. Actual locations for floor drains, and any ventilating equipment to be determined by Engineer. Mechanical, Plumbing & Electrical to be checked and verified by Customers MEP Engineer. Remote Condensing Units to be located by Architect. Exhaust & Supply fans to be located by Architect.

**Alaia Resort
Bars
San Pedro, Belize**

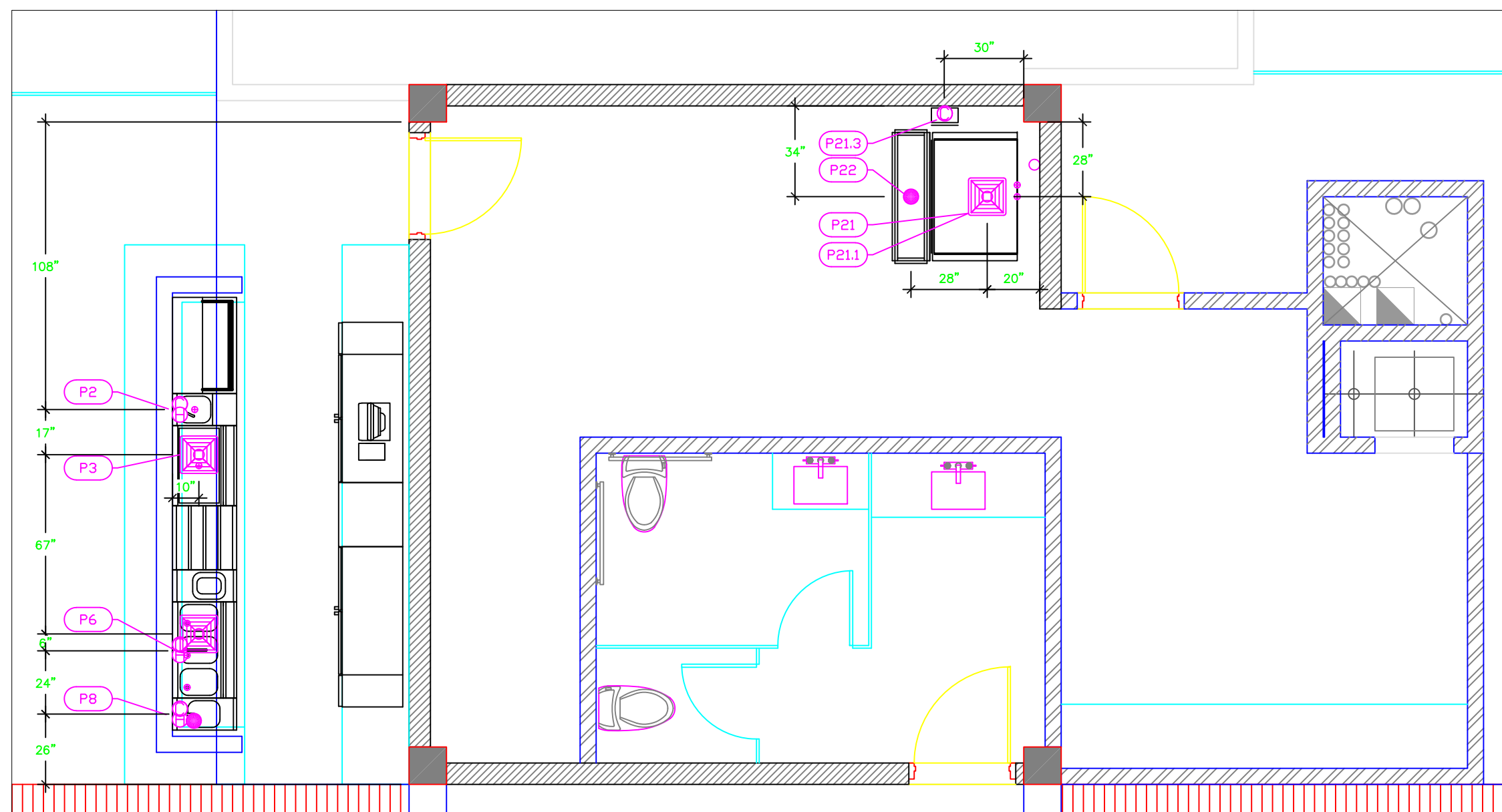
**uni-source
SUPPLY**
INTERNATIONAL INC.

2055 W 73rd Street, Miami, FL 33016
Ph: (305)826-8696 Fax: (305)826-9131

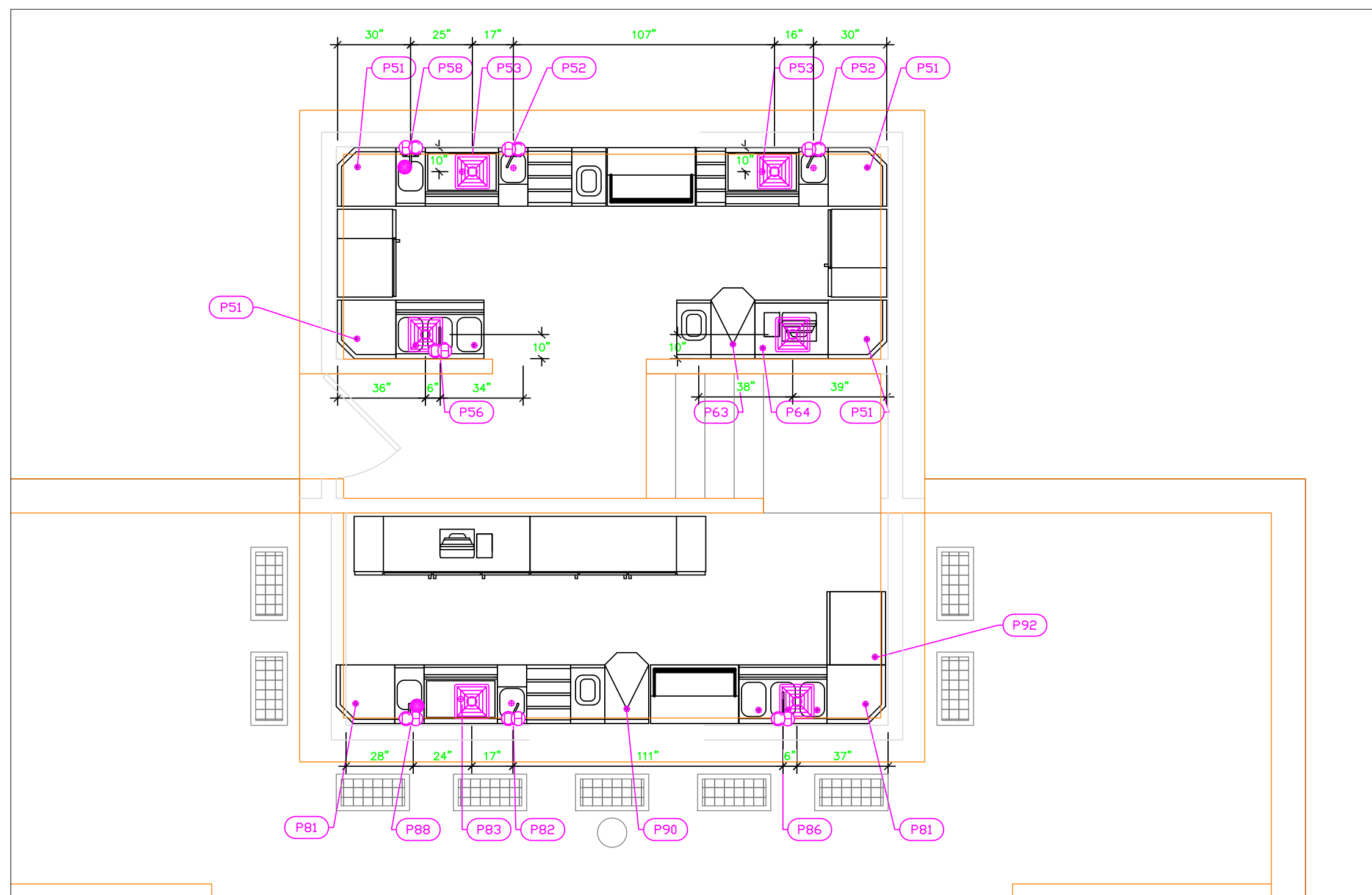
1	Preliminary Layout	7-17-18
2	MEP added	8-31-18
3	Updated Background	9-25-18
4	Updated Background on Service Bar.	11-7-18
No.	Revision/Issue	Date

Date
Nov 7, 2018
Drawn By
Dayne Gauntlett
Scale
1/4" = 1'0"

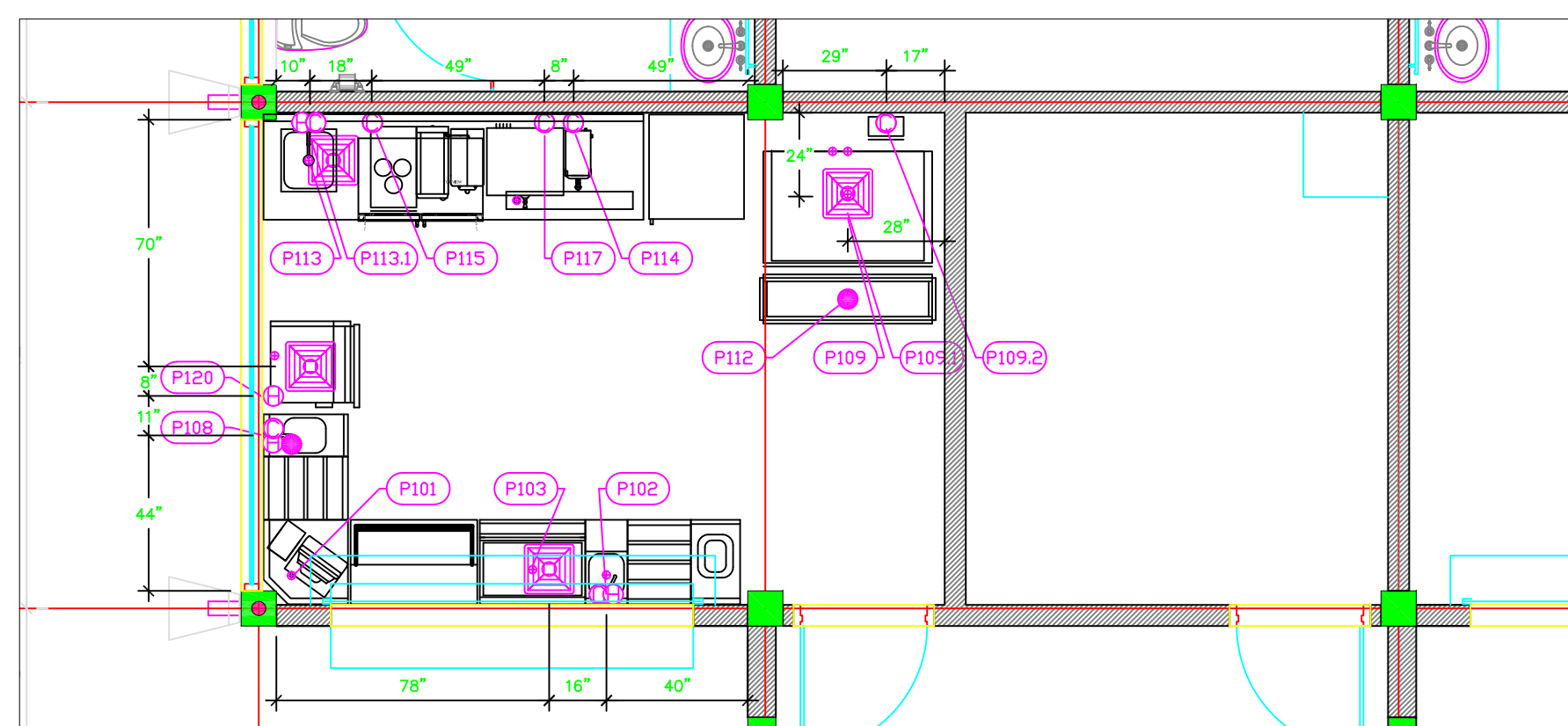
Sheet
AB-2



Building B Roof Top Bar

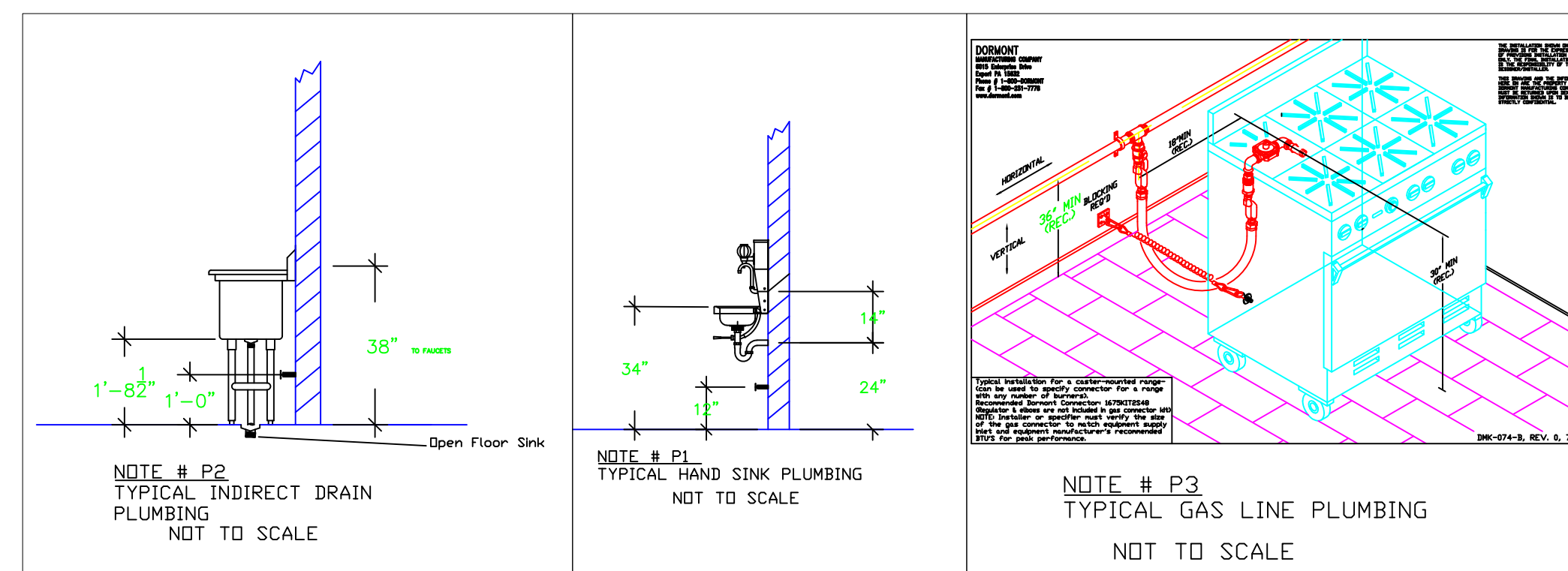


Poolside Bars



Beach & Pool Service Bar

PLUMBING SCHEDULE														
ITEM NO.	DESCRIPTION	COLD WATER SIZE	COLD WATER AFF	HOT WATER SIZE	HOT WATER AFF	H&C Rough-In	DIRECT WASTE SIZE	DIRECT WASTE AFF	INDIRECT WASTE SIZE	GAS SIZE(IN)	GAS CONN. AFF	GAS MBTU	QTY	PLUMBING REMARKS
2	Blender Station	1/2"	30"	1/2"	30"	12"			1"				1	Waste to Floor Sink
3	Ice Bin								1"				1	Waste to Floor Sink
6	Underbar Sink Units	1/2"	30"	1/2"	30"	12"			(3) 1-1/2"				1	Waste to Floor Sink
8	Hand Sink	1/2"	30"	1/2"	30"	12"	1"	14"					1	
21	Ice Cuber	3/4"	60"			n/a			3/4"				1	Incoming Water from Filter 21.3
21.1	Ice Bin for Ice Machines								3/4"				1	Waste to Floor Sink
21.3	Water Filtration System	1/2"	60"			60"							1	
22	Floor Trough						4"	Floor					1	Installed by Plumber
51	Corner Angle Filler								1"				4	Waste to Floor Sink
52	Blender Station	1/2"	30"	1/2"	30"	12"			1"				2	Waste to Floor Sink
53	Ice Bin								1"				2	Waste to Floor Sink
56	Underbar Sink Units	1/2"	30"	1/2"	30"	12"			(3) 1-1/2"				1	Waste to Floor Sink
58	Hand Sink	1/2"	30"	1/2"	30"	12"	1"	14"					1	
63	Blender Station								1"				1	Waste to Floor Sink
64	Storage Cabinet								1"				1	Waste to Floor Sink
81	Corner Angle Filler								1"				2	Waste to Floor Sink
82	Blender Station	1/2"	30"	1/2"	30"	12"			1"				1	Waste to Floor Sink
83	Ice Bin								1"				1	Waste to Floor Sink
86	Underbar Sink Units	1/2"	30"	1/2"	30"	12"			(3) 1-1/2"				1	Waste to Floor Sink
88	Hand Sink	1/2"	30"	1/2"	30"	12"	1"	14"					1	
90	Blender Station								1"				1	Waste to Floor Sink
92	Storage Cabinet								1"				1	Waste to Floor Sink
101	Corner Angle Filler								1"				1	Waste to Floor Sink
102	Blender Station	1/2"	30"	1/2"	30"	12"			1"				1	Waste to Floor Sink
103	Ice Bin								1"				1	Waste to Floor Sink
108	Hand Sink	1/2"	30"	1/2"	30"	12"	1"	14"					1	
109	Ice Cuber	3/4"	60"			n/a			3/4"				1	Incoming wate from Filter #109.2
109.1	Ice Bin for Ice Machines								3/4"				1	Waste to Floor Sink
109.2	Water Filtration System	1/2"	60"			60"							1	
112	Floor Trough						4"						1	Installed by Plumber
113	Beverage Counter	1/2"	36"	1/2"	36"	12"			1-1/2"				1	
113.1	Wall / Splash Mount Faucet	1/2"	36"	1/2"	36"	12"							1	
114	Hot Water Dispenser	1/4"	45"			12"							1	
115	Espresso Cappuccino Machine	1/4"	40"			12"							1	Confirm requirements with Owner
117	Coffee Brewer	3/8"	40"			12"							1	
120	Glasswasher			1/2"	15"	12"			2"				1	Waste to Floor Sink



LEGEND -- PLUMBING CONNECTIONS

- HW--HOT WATER, OR CW--COLD WATER
- GAS
- WASTE, DIRECT--CONNECTED
- WASTE, INDIRECT TO Floor Sink
- FLOOR DRAIN Josam 30000-A3
- FUNNEL FLOOR DRAIN Josam 30000-E3
- FLOOR SINK Zurn FD-2370-Y--PV4-F

NOTE # P4. ALL NATIONAL, STATE, AND LOCAL CODES SHALL APPLY

NOTE # P5. ALL PLUMBING CONNECTIONS TO BE EXTENDED AND INTERCONNECTED TO EQUIPMENT AND ALL HARDWARE REQUIRED TO BE PROVIDED BY PLUMBING CONTRACTOR

NOTE # P6. PLUMBING CONTRACTOR TO VERIFY THAT ALL EQUIPMENT IS INSTALLED WITH THE APPROPRIATE GAS PRESSURE AND REGULATORS

NOTE # P7. ALL WASTE LINES AND CONDENSATE LINES TO BE EXTEND FROM EQUIPMENT TO FLOOR DRAINS BY PLUMBING CONTRACTOR.

Equipment PLUMBING Service Requirements

All Dimensions to be verified on the job site. Actual locations for floor drains, and any ventilating equipment to be determined by Engineer. Mechanical, Plumbing & Electrical to be checked and verified by Customers MEP Engineer. Remote Condensing Units to be located by Architect. Exhaust & Supply fans to be located by Architect.

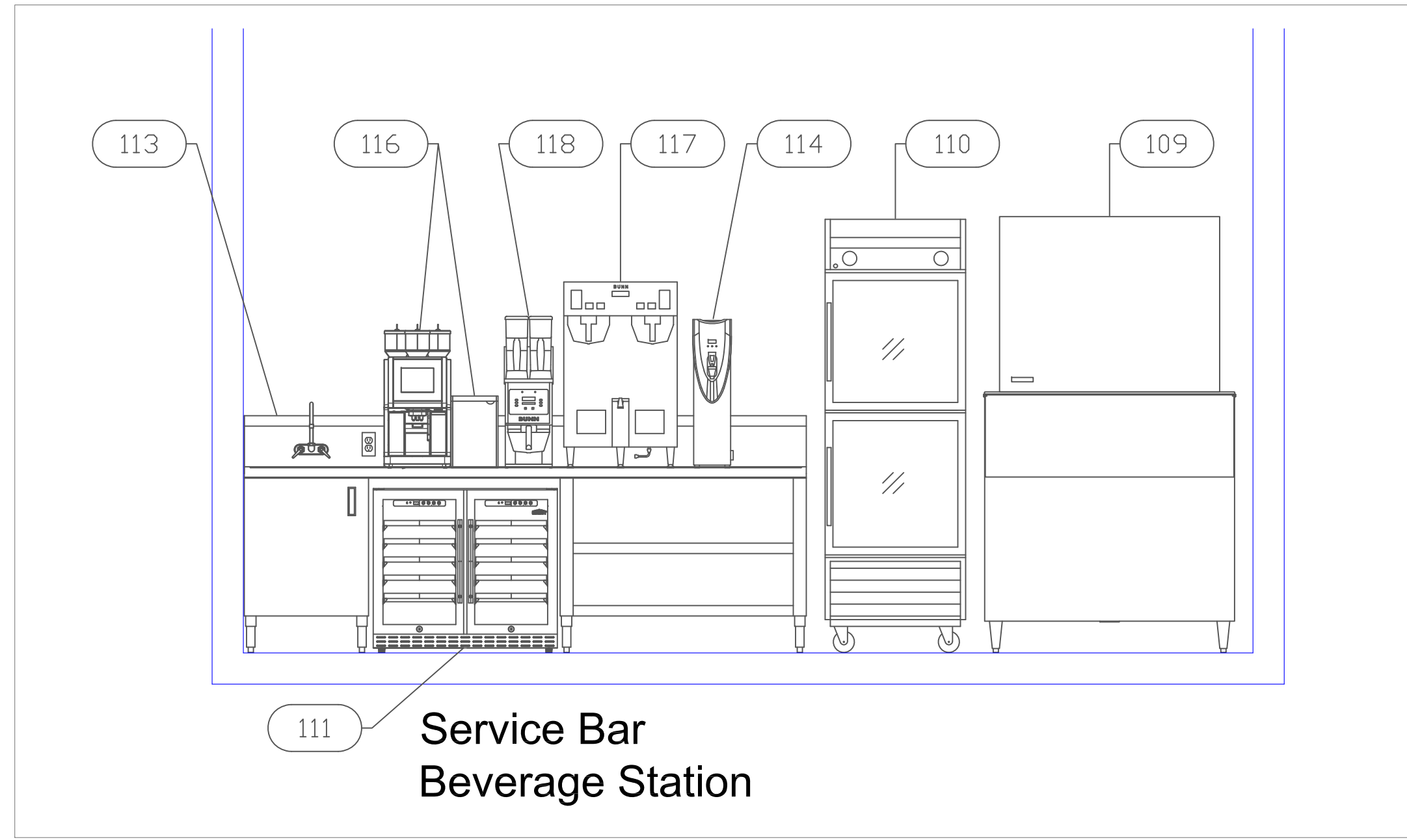
Alaia Resort
Bars
San Pedro, Belize

uni-source
SUPPLY
INTERNATIONAL INC.
2055 W 73rd Street, Miami, FL 33016
Ph:(305)826-8696 Fax:(305)826-9131

1	Preliminary Layout	7-17-18
2	MEP added	8-31-18
3	Updated Background	9-25-18
4	Updated Background on Service Bar.	11-7-18
No.	Revision/Issue	Date

Date
Nov 7, 2018
Drawn By
Dayne Gauntlett
Scale
1/4" = 1'0"

Sheet
AB-3



Alaia Resort
Bars
San Pedro, Belize



INTERNATIONAL INC.
 2055 W 73rd Street, Miami, FL 33016
 Ph: (305)826-8696 Fax: (305)826-9131

1	Preliminary Layout	7-17-18
2	MEP added	8-31-18
3	Updated Background	9-25-18
4	Updated Background on Service Bar	11-7-18
No.	Revision/Issue	Date

Date
Nov 7, 2018
 Drawn By
Dayne Gauntlett
 Scale
1/2" = 1'

Sheet
AB-4