

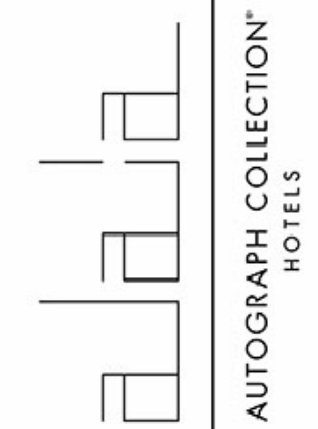
EQUIPMENT SCHEDULE

ItemNo	Category	Mfr	Model	Quantity	Equipment Remarks
1	Electric Floor Fryer	Imperial	IFS-40-E	2	
2	Dishwasher, Door Type	Jackson WWS	CONSERVER XL-E	1	
3	Soiled Dishtable	Advance Tabco	DTS-S70-36R	1	
3.1	Pre-Rinse Faucet Assembly	Krowne	17-108WL	1	
4	Clean Dishtable	Advance Tabco	DTC-S60-24L	1	
5	Sandwich / Salad Preparation Refrigerator	Continental Refrigerator	CRA43-6-D	1	
5.1	Sandwich / Salad Preparation Refrigerator	Continental Refrigerator	SW72N12-D	1	
6	Three (3) Compartment Sink	Advance Tabco	FC-3-1515-15RL	1	
6.1	Wall / Splash Mount Faucet	Krowne	14-810L	1	
6.2	Overshelf	Advance Tabco	PS-12-72	1	
7	Griddle, Electric, Countertop	Imperial	ITG-24-E	1	
8	Microwave Oven	ACP	RFS12TS	1	
8.1	Microwave Oven, Shelf	Advance Tabco	MS-18-24	1	
9	Rice / Grain Cooker	Hamilton Beach	37590	1	
10	Reach-In Refrigerator	Continental Refrigerator	2RN	1	
11	Spare Number				
12	Equipment Stand, Freezer Base	Continental Refrigerator	DL48GF	1	
13	Spare Number				
14	Pasta Cooker, Electric	Waring	WPC100	1	
15	Food Slicer, Electric	Univex	8713M	1	
15.1	Equipment Stand, for Mixer / Slicer	Advance Tabco	AG-MP-30	1	
16	Spare Number				
17	Work Table, Stainless Steel Top	Advance Tabco	KMS-304	1	
18	Coffee Brewer	BUNN	12950.0216	1	
19	Wire Shelving Unit	NEXEL	18486N	1	
20	Spare Number				
21	Exhaust Hood	Captive-Aire	HOOD	1	
21.1	Exhaust Fan	Captive-Aire	FAN	1	
21.2	Supply Fan	Captive-Aire	SUPPLY	1	
22	Spare Number				
23	Ice Cuber	Kold-Draft	GB1064AC	1	
23.1	Ice Bin for Ice Machines	Kold-Draft	KDB950D	1	
23.2	Ice Crusher	Kold-Draft	T284	1	
23.3	Water Filtration System, Parts & Accessories	Antunes	CBE-TW	1	
24	Floor Trough	Advance Tabco	FFTG-1248	1	
25-99	Spare Number				

EQUIPMENT LAYOUT

All Dimensions to be verified on the job site. Actual locations for floor drains, and any ventilating equipment to be determined by Engineer. Mechanical, Plumbing & Electrical to be checked and verified by Customers MEP Engineer. Remote Condensing Units to be located by Architect. Exhaust & Supply fans to be located by Architect.

**Alaia
Rooftop Kitchen
Belize**



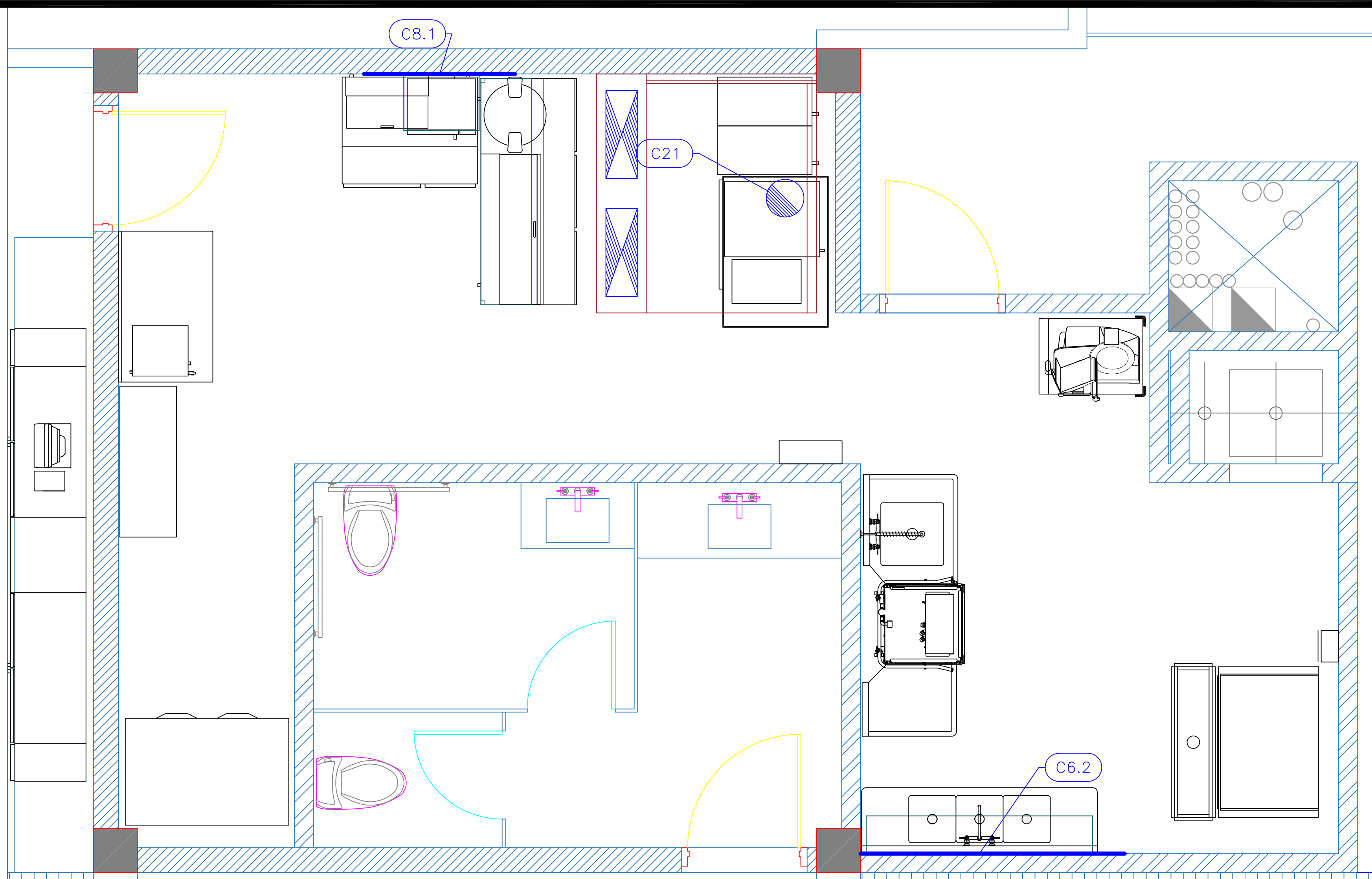
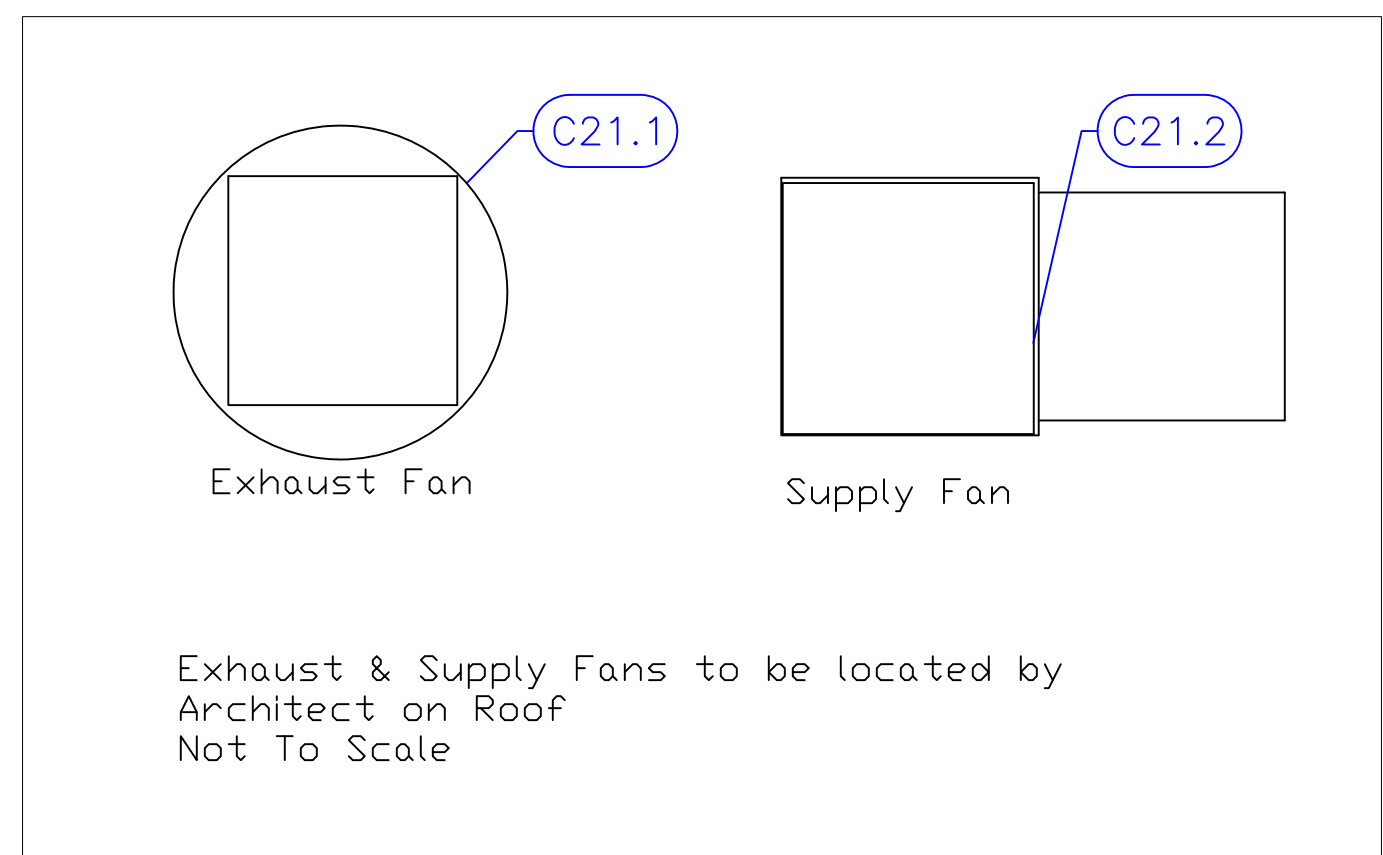
INTERNATIONAL INC.

2055 W 73rd Street, Miami, FL 33016
Ph: (305)826-8696 Fax: (305)826-9131

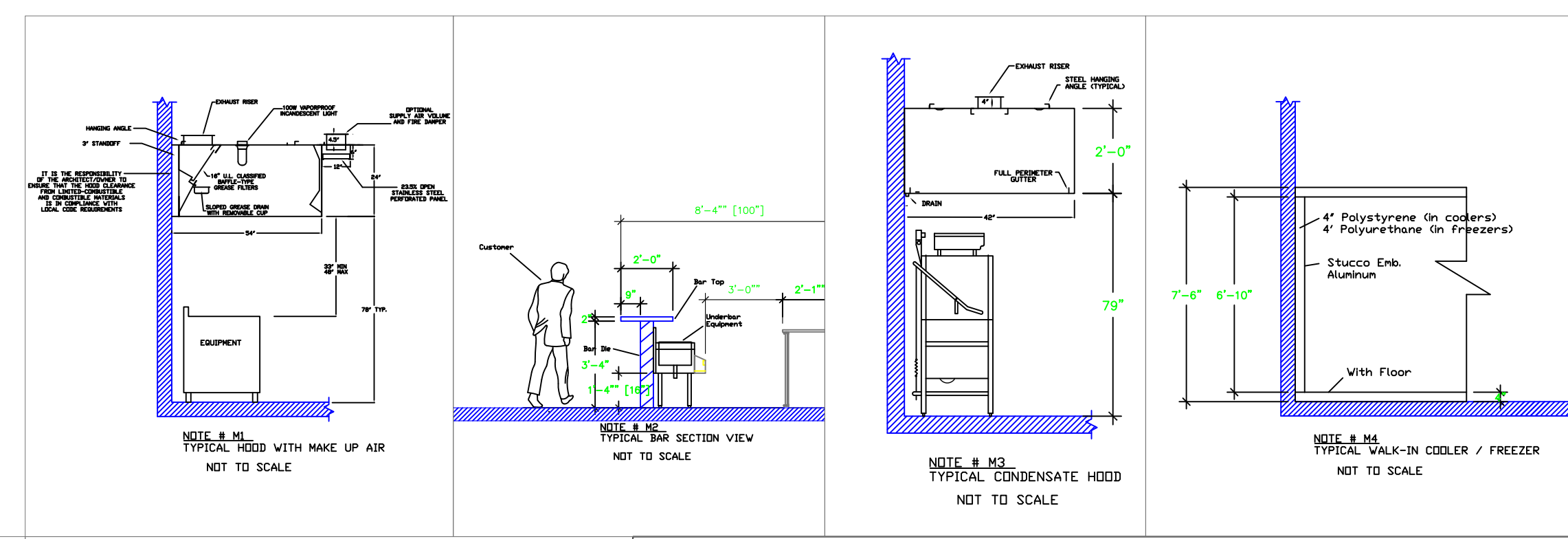
No.	Revision/Issue	Date
1	Preliminary Layout	5-13-19
2	Updates From Owner Comments	5-16-19
3	Added Equipment Services Details	7-15-19
4	Added Make-Up Air to Hood	9-19-19

Date
Sept 19 2019
Drawn By
Dayne Gauntlett
Scale
1/2" = 1'0"

Sheet
FS-1



Mechanical Schedule							
ITEM NO.	QTY	DISCRIPTION	EXHAUST (L X W)	EXHAUST (CFM)	SUPPLY (L X W)	SUPPLY (CFM)	Ventilation Remarks
6.2	1	Overshelf					Wall Backing See Note M9
8.1	1	Microwave Oven, Shelf					Wall Backing See Note M9
21	1	Exhaust Hood	12" Dia		(2) 10"x28"		
21.1	1	Exhaust Fan	22.5"x22.5"	1430			Dims are Roof Opening
21.2	1	Supply Fan			19"x19"	1144	Dims are Roof Opening



LEGEND -- MECHANICAL

- EXHAUST DUCT COLLAR
- SUPPLY DUCT COLLAR
- INWALL BACKING FOR WALL SHELVES
- RECESSED FLOOR
- RAISED EQUIPMENT PAD

NOTE # M5
ALL NATIONAL, STATE, AND LOCAL CODES SHALL APPLY.

NOTE # M6
ARCHITECT OR ENGINEER TO SIZE AND LOCATE, CONTRACTOR TO PROVIDE ALL OPENINGS FOR DUCTS, PLUMBING LINES, ELECTRICAL LINES, AND REFRIGERATION LINES, AS REQUIRED BY EQUIPMENT.

NOTE # M7
SUPPLY FANS TO BE LOCATED A MINIMUM OF 10' FROM EXHAUST FANS.

NOTE # M8
SHOP DRAWING WILL BE PROVIDED BY MANUFACTURER FOR HOOD, EXHAUST FANS, & SUPPLY FANS, UNCE ORDER IS PLACE WITH.

NOTE # M9
GENERAL CONTRACTOR TO PROVIDE 2" PLYWOOD WALL BACKING FROM 48" TO 78" AFF FOR ALL WALL MOUNTED EQUIPMENT.

NOTE # M10
CEILING HEIGHTS TO BE VERIFIED FOR SUFFICIENT CLARENCE FOR EQUIPMENT.

NOTE # M11
REFRIGERATION CONTRACTOR TO HANG EVAPORATORS FOR WALK-IN, RUN & CHARGE LINES BETWEEN EVAP. & CONDENSING UNIT.

Equipment MECHANICAL Service Requirements

All Dimensions to be verified on the job site. Actual locations for floor drains, and any ventilating equipment to be determined by Engineer.
Mechanical, Plumbing & Electrical to be checked and verified by Customers MEP Engineer.
Remote Condensing Units to be located by Architect.
Exhaust & Supply fans to be located by Architect.

**Alaia
Rooftop Kitchen
Belize**

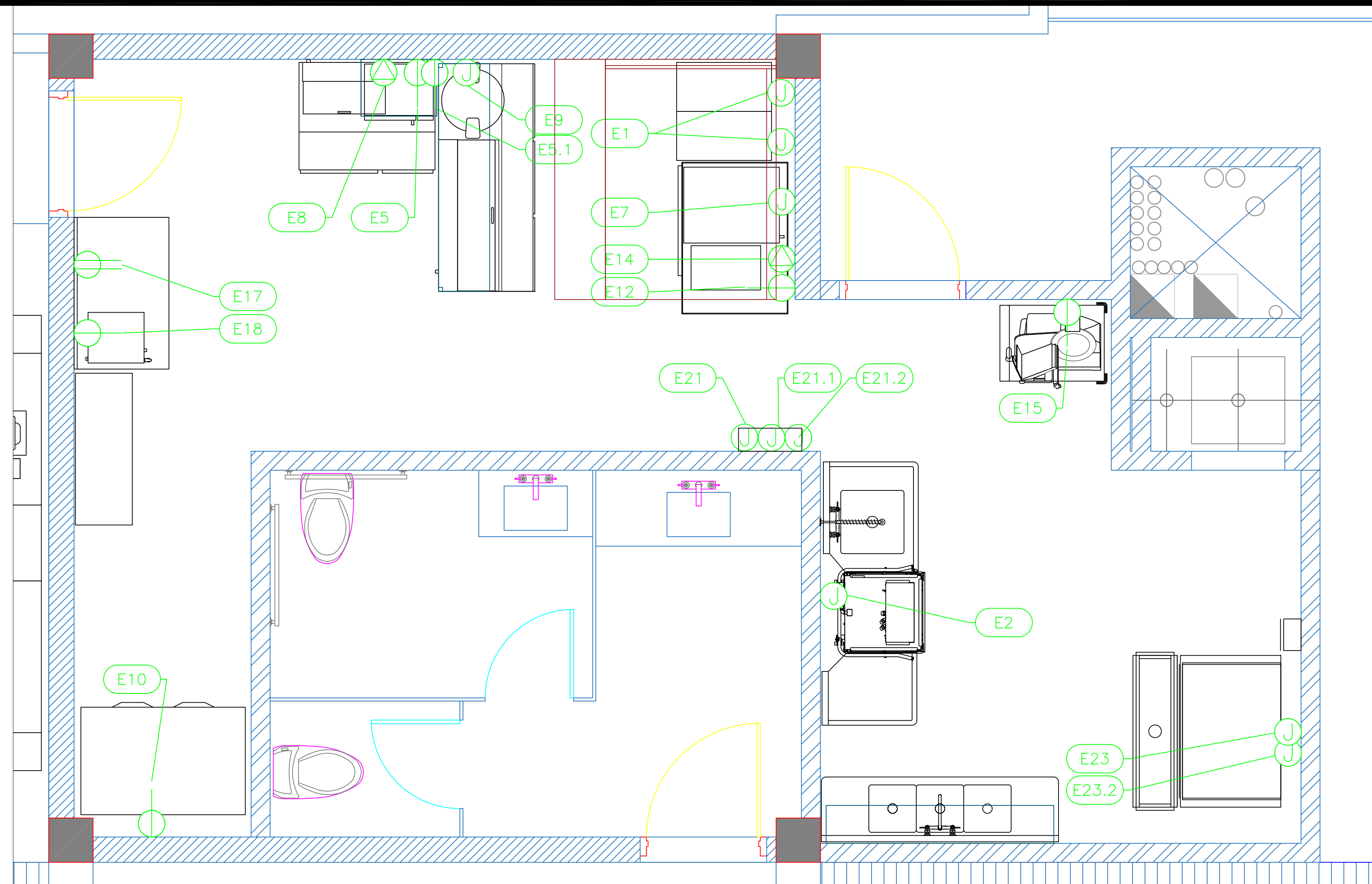
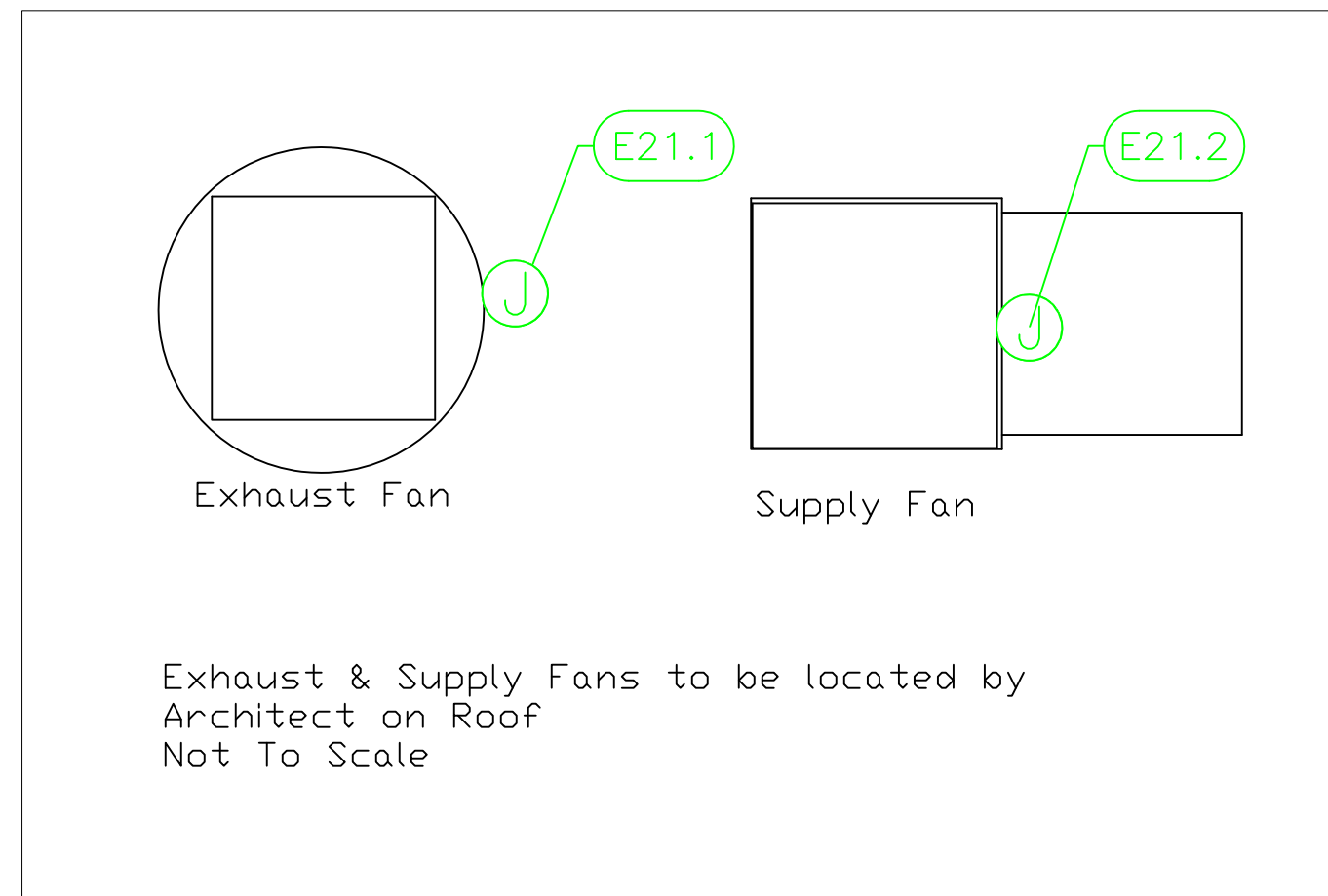
AUTOGRAPH COLLECTION
HOTELS

INTERNATIONAL INC.
2055 W 73rd Street, Miami, FL 33016
Ph: (305) 826-8696 Fax: (305) 826-9131

No.	Revision/Issue	Date
1	Preliminary Layout	5-13-19
2	Updates From Owner Comments	5-16-19
3	Added Equipment Services Details	7-15-19
4	Added Make-Up Air to Hood	9-19-19

Date
Sept 19 2019
Drawn By
Dayne Gauntlett
Scale
1/2" = 1'0"

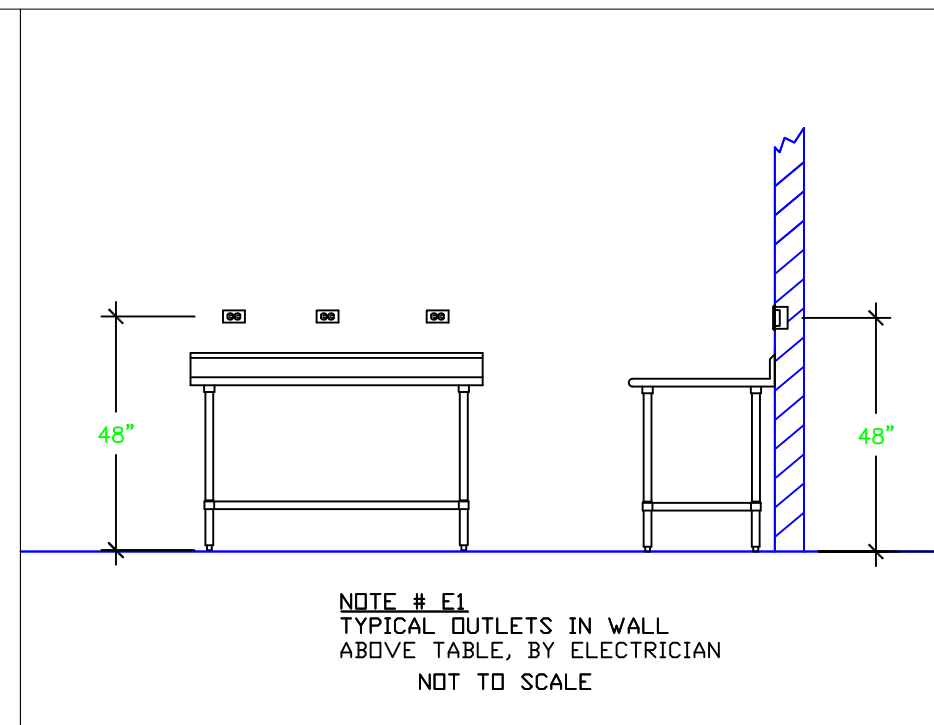
Sheet
FS-2



ELECTRICAL SCHEDULE												
ItemNo	Category	Voltage	Cycle	Phase	Amps	Hp	NEMA	ConnectionType	Rough-In AFF	Quantity	Electrical Remarks	
1	Electric Floor Fryer	208	30	3	39.0			J-Box	18"	2		
2	Dishwasher, Door Type	115	60	1	11.4	1		J-Box	18"	1		
5	Sandwich / Salad Preparation Refrigerator	115	60	1	5.3	1/4	5-15P	Simplex	18"	1		
5.1	Sandwich / Salad Preparation Refrigerator	115	60	1	7.6	1/4	5-15P	Simplex	18"	1		
7	Griddle, Electric, Countertop	208	60	3	29.0			J-Box	18"	1		
8	Microwave Oven	120	60	1	16		5-20P	Special	72"	1	5-20R Receptical	
9	Rice / Grain Cooker	240	60	1	10.4			J-Box	42"	1		
10	Reach-In Refrigerator	115	60	1	6.5	1/3	5-15P	Simplex	18"	1		
12	Equipment Stand, Freezer Base	115	60	1	5.7	1/4	5-15P	Simplex	18"	1		
14	Pasta Cooker, Electric	208	60	1	12.9		6-15P	Special	18"	1	6-15R Receptical	
15	Food Slicer, Electric	115	60	1	5.4	1/2	5-15P	Simplex	54"	1		
17	Work Table, Stainless Steel Top	115	60	1	15			Duplex	54"	1	Convenience Outlet See Note E1	
18	Coffee Brewer	120	60	1	13.9		5-15P	Simplex	54"	1		
21	Exhaust Hood	120	60	1	15			J-Box	102"	1	Elec for Lights, Controls, and Fire	
21.1	Exhaust Fan	120	60	1	8.8			J-Box	102"	1	Interconnect with Fan on Roof	
21.2	Supply Fan	120	60	1	10.2			J-Box	102"	1		
23	Ice Cuber	208-230	60	1	11.0			J-Box	60"	1		
23.2	Ice Crusher	208-230	50/60	1	4.1			J-Box	60"	1		

LEGEND - ELECTRICAL CONNECTIONS

- DUPLEX RECEPT., 15-AMP, 120-VOLT, GROUND TYPE, HORIZONTAL MOUNT
- SIMPLEX RECEPT., 120-VOLT, GROUND TYPE, HORIZONTAL MOUNT
- SPECIAL PURPOSE OUTLET, GROUND TYPE, HORIZONTAL MOUNT
- JUNCTION BOX, DIRECT CONNECTION
- DISCONNECT SWITCH, DIRECT CONNECTION
- FLOOR/CEILING RECEPTACLE AS INDICATED
- (2) Telephone + (2) Data
- FIELD CONNECTIONS
- HARD WIRE CONNECTION POINT AT MACHINE



NOTE # E2
ALL NATIONAL, STATE, AND LOCAL CODES SHALL APPLY

NOTE # E3
ALL ELECTRICAL CONNECTIONS AND HARDWARE REQUIRED TO BE PROVIDED BY ELECTRICAL CONTRACTOR

NOTE # E4
ALL JUNCTION BOXES, OUTLETS, ETC. TO BE LOCATED SO AS TO NOT INTERFERE WITH EQUIPMENT

NOTE # E5
ALL RELAYS, CONTRACTORS, STARTERS, AND SWITCHES REQUIRED FOR EXHAUST & SUPPLY FANS TO BE PROVIDED BY ELECTRICAL CONTRACTOR UNLESS SPECIFIED

NOTE # E6
ELECTRICAL CONTRACTOR TO INTERCONNECT DISHMACHINE TO EXHAUST FAN FOR DISHMACHINE SO THAT THE FAN RUNS WHEN THE DISHMACHINE IS IN OPERATION.

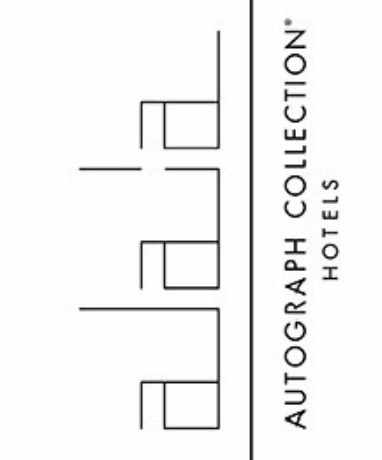
NOTE # E7
ELECTRICAL CONTRACTOR TO INSTALL TABLE LIMIT SWITCH TO END OF CLEAN DISHTABLE TO THAT MACHINE STOPS WHEN SWITCH IS DEPRESSED.

NOTE # E8
ELECTRICAL CONTRACTOR TO CONNECT DRAIN LINE HEATER, PAN HEATER AND DDBR HEATER FOR WALK-IN FREEZER.

Equipment ELECTRICAL Service Requirements

All Dimensions to be verified on the job site. Actual locations for floor drains, and any ventilating equipment to be determined by Engineer. Mechanical, Plumbing & Electrical to be checked and verified by Customers MEP Engineer. Remote Condensing Units to be located by Architect. Exhaust & Supply fans to be located by Architect.

**Alaia
Rooftop Kitchen
Belize**

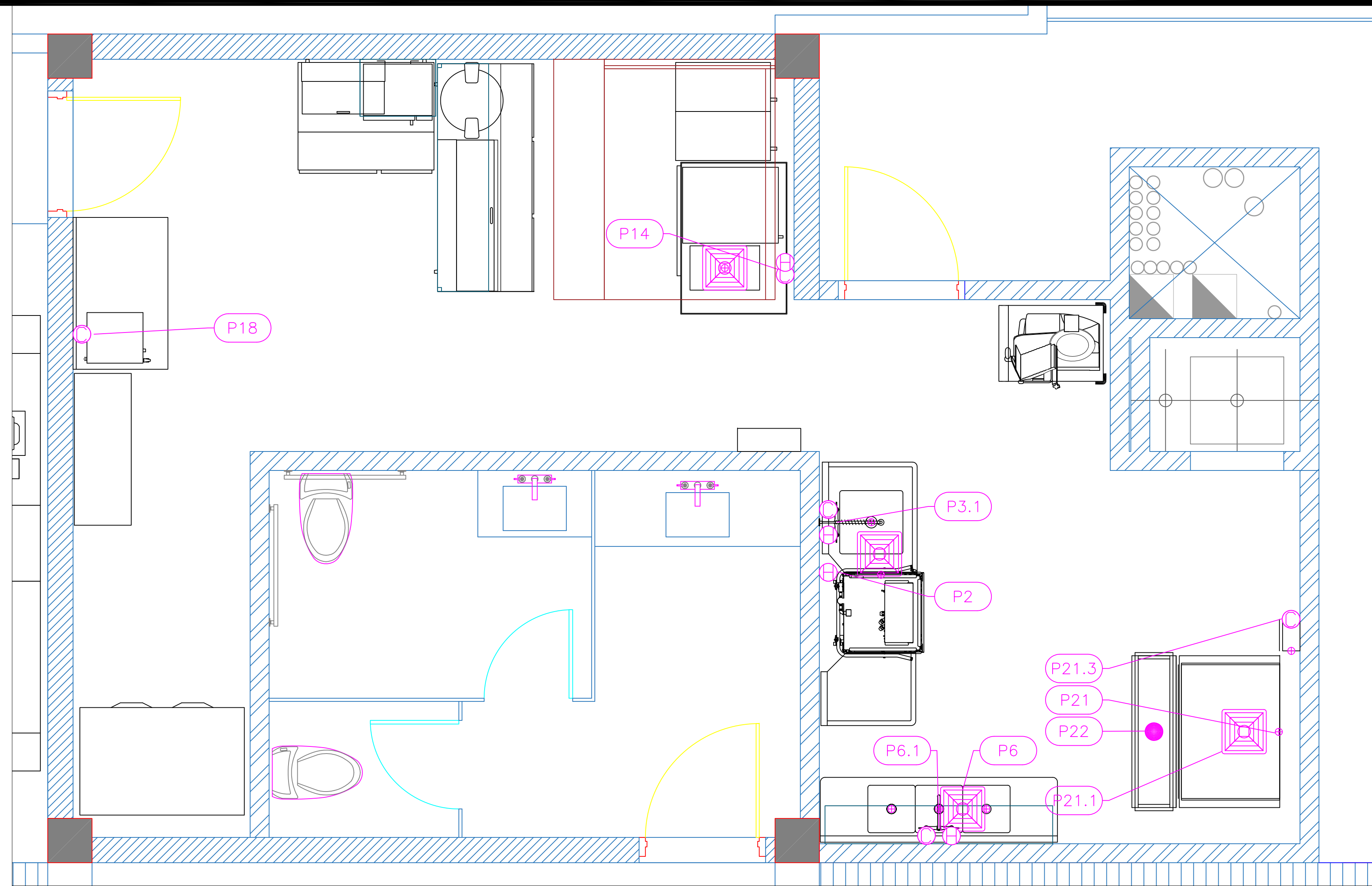
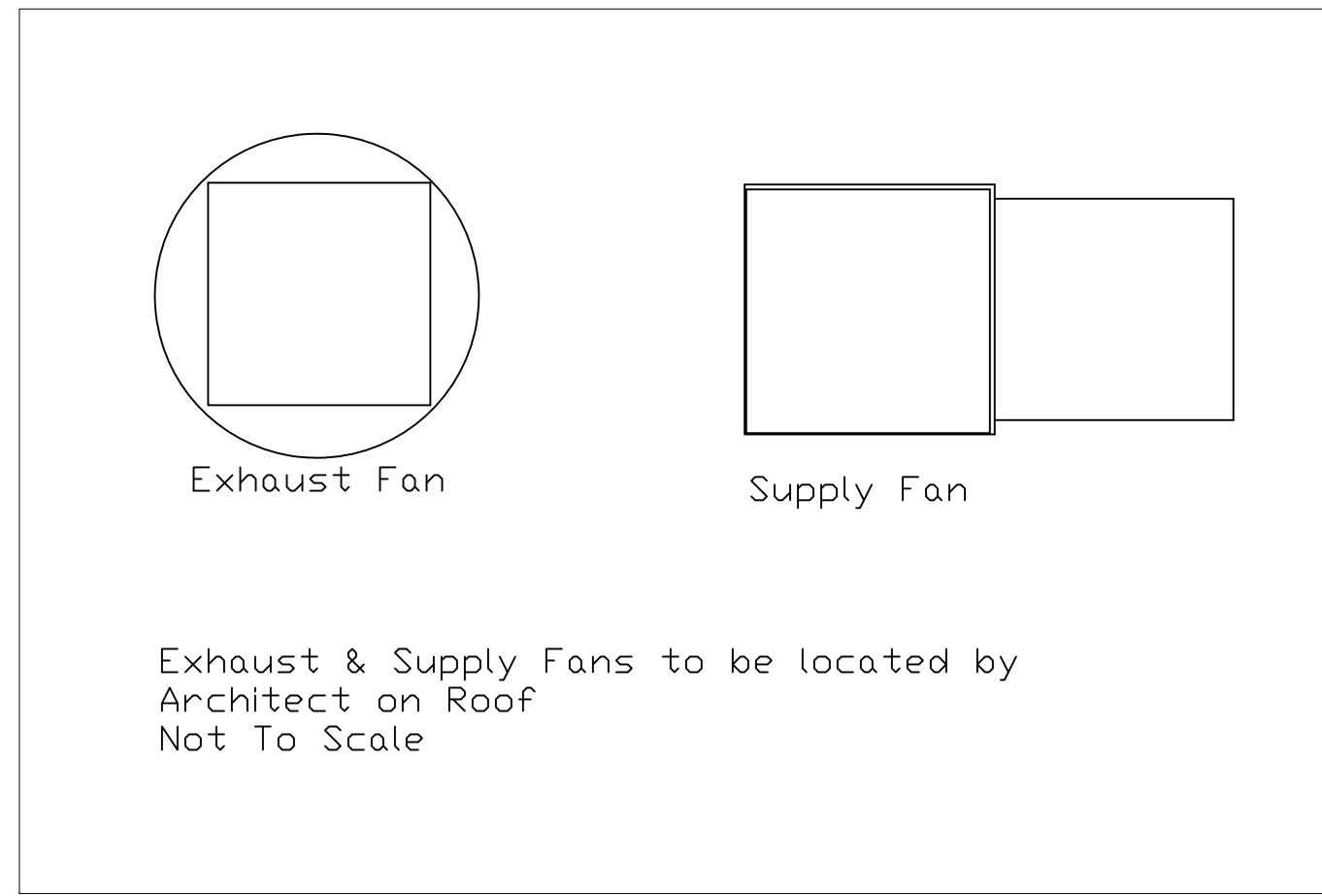


INTERNATIONAL INC.
2055 W 73rd Street, Miami, FL 33016
Ph:(305)826-8696 Fax:(305)826-9131

1	Preliminary Layout	5-13-19
2	Updates From Owner Comments	5-16-19
3	Added Equipment Services Details	7-15-19
4	Added Make-Up Air to Hood	9-19-19
No.	Revision/Issue	Date

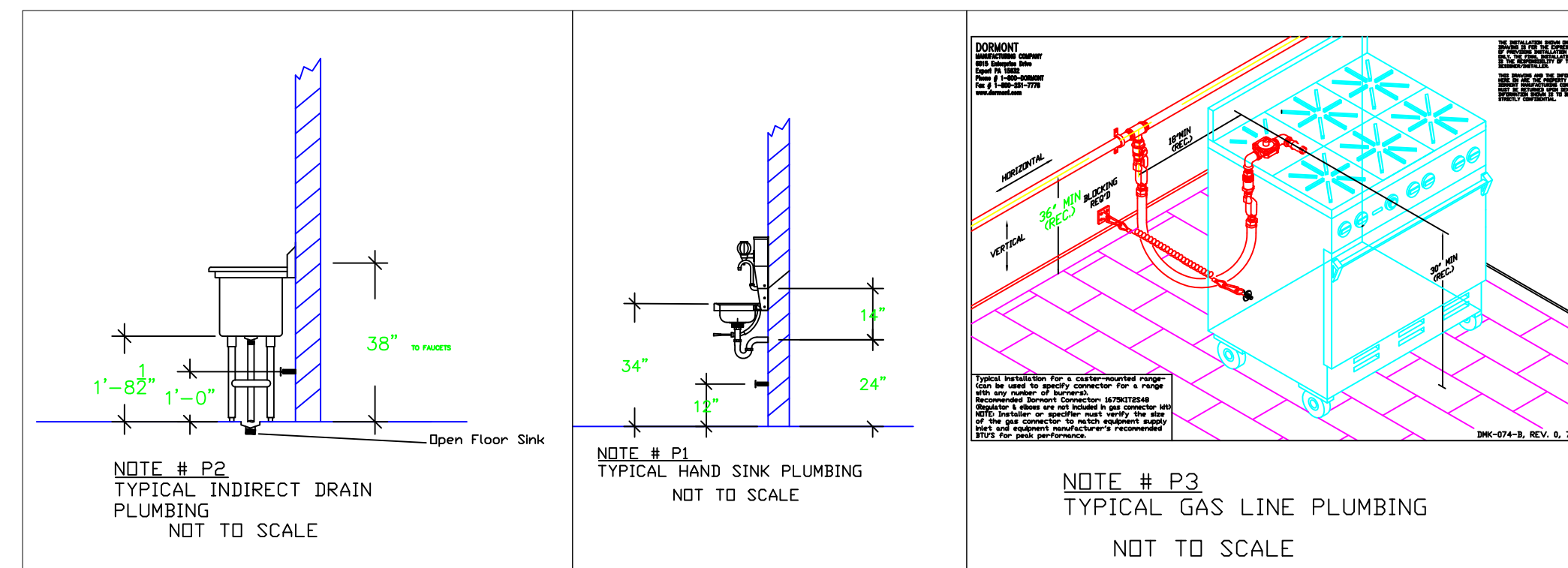
Date
Sept 19 2019
Drawn By
Dayne Gauntlett
Scale
1/2" = 1'0"

Sheet
FS-3



PLUMBING SCHEDULE

ITEM NO.	DESCRIPTION	COLD WATER SIZE	HOT WATER SIZE	H&C Rough-In	DIRECT WASTE SIZE	DIRECT WASTE AFF	INDIRECT WASTE SIZE	GAS SIZE (IN)	GAS MBTU	QTY	PLUMBING REMARKS
2	Dishwasher, Door Type		3/4"				2"			1	Waste to Floor Sink
3	Soiled Dishtable						1-1/2"			1	Waste to Floor Sink
3.1	Pre-Rinse Faucet Assembly	1/2"	1/2"	12"						1	
6	Three (3) Compartment Sink						(3) 1-1/2"			1	Waste to Floor Sink
6.1	Wall / Splash Mount Faucet	1/2"	1/2"	12"						1	
14	Pasta Cooker, Electric	1/2"	1/2"				1/2"			1	Waste to Floor Sink
18	Coffee Brewer	1/4"		12"						1	
23	Ice Cuber	3/4"		n/a			3/4"			1	Incoming Water from Filter 23.3
23.1	Ice Bin for Ice Machines						3/4"			1	Waste to Floor Sink
23.3	Water Filtration System, Parts & Accessories	1/2"		60"						1	
24	Floor Trough				4"	Floor				1	Installed by Plumber



LEGEND -- PLUMBING CONNECTIONS

- HW--HOT WATER, OR CW--COLD WATER
- GAS
- WASTE, DIRECT-CONNECTED
- WASTE, INDIRECT to Floor Sink
- WASTE, INDIRECT to Funnel Floor Drain
- FLOOR DRAIN Josam 30000-A3
- FLOOR SINK Zurn FD-2370-Y-PV4-F

NOTE # P4.
ALL NATIONAL, STATE, AND LOCAL CODES SHALL APPLY

NOTE # P5.
ALL PLUMBING CONNECTIONS TO BE EXTENDED AND INTERCONNECTED TO EQUIPMENT AND ALL HARDWARE REQUIRED TO BE PROVIDED BY PLUMBING CONTRACTOR

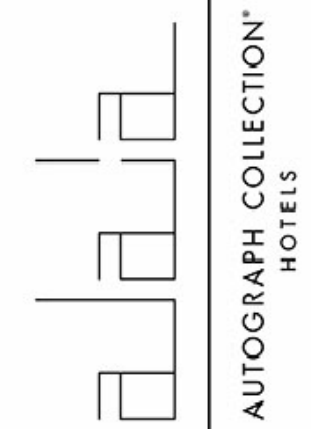
NOTE # P6.
PLUMBING CONTRACTOR TO VERIFY THAT ALL EQUIPMENT IS INSTALLED WITH THE APPROPRIATE GAS PRESSURE AND REGULATORS

NOTE # P7.
ALL WASTE LINES AND CONDENSATE LINES TO BE EXTEND FROM EQUIPMENT TO FLOOR DRAINS BY PLUMBING CONTRACTOR.

Equipment PLUMBING Service Requirements

All Dimensions to be verified on the job site. Actual locations for floor drains, and any ventilating equipment to be determined by Engineer. Mechanical, Plumbing & Electrical to be checked and verified by Customers MEP Engineer. Remote Condensing Units to be located by Architect. Exhaust & Supply fans to be located by Architect.

**Alaia
Rooftop Kitchen
Belize**



INTERNATIONAL INC.

2055 W 73rd Street, Miami, FL 33016
Ph:(305)826-8696 Fax:(305)826-9131

No.	Revision/Issue	Date
1	Preliminary Layout	5-13-19
2	Updates From Owner Comments	5-16-19
3	Added Equipment Services Details	7-15-19
4	Added Make-Up Air to Hood	9-19-19

Date
Sept 19 2019
Drawn By
Dayne Gauntlett
Scale
1/2" = 1'0"

Sheet
FS-4

HOOD INFORMATION - Job#3834639

HOOD NO.	TAG	MODEL	LENGTH	MAX. COOKING TEMP.	APPLIANCE DUTY	DESIGN CFM/FT	TOTAL EXH. CFM	EXHAUST PLENUM RISERS				TOTAL SUPPLY CFM	HOOD CONSTRUCTION	HOOD CONFIG. END TO END	HOOD CONFIG. RDV			
1		5424 AH-ND-2-PSP-F	6' 1"	600 Deg	Heavy	235	1430	WIDTH	LENG	HEIGHT	DIA.	CFM	VEL.	S.P.	1144	430 SS Where Exposed	ALDNE	ALDNE

PATENT NUMBERS
 AC-PSP (United States) - US Patent 7963830 B2
 AC-PSP Wall (Canada) - CA Patent 2820509
 AC-PSP Island (Canada) - CA Patent 2520530

HOOD INFORMATION

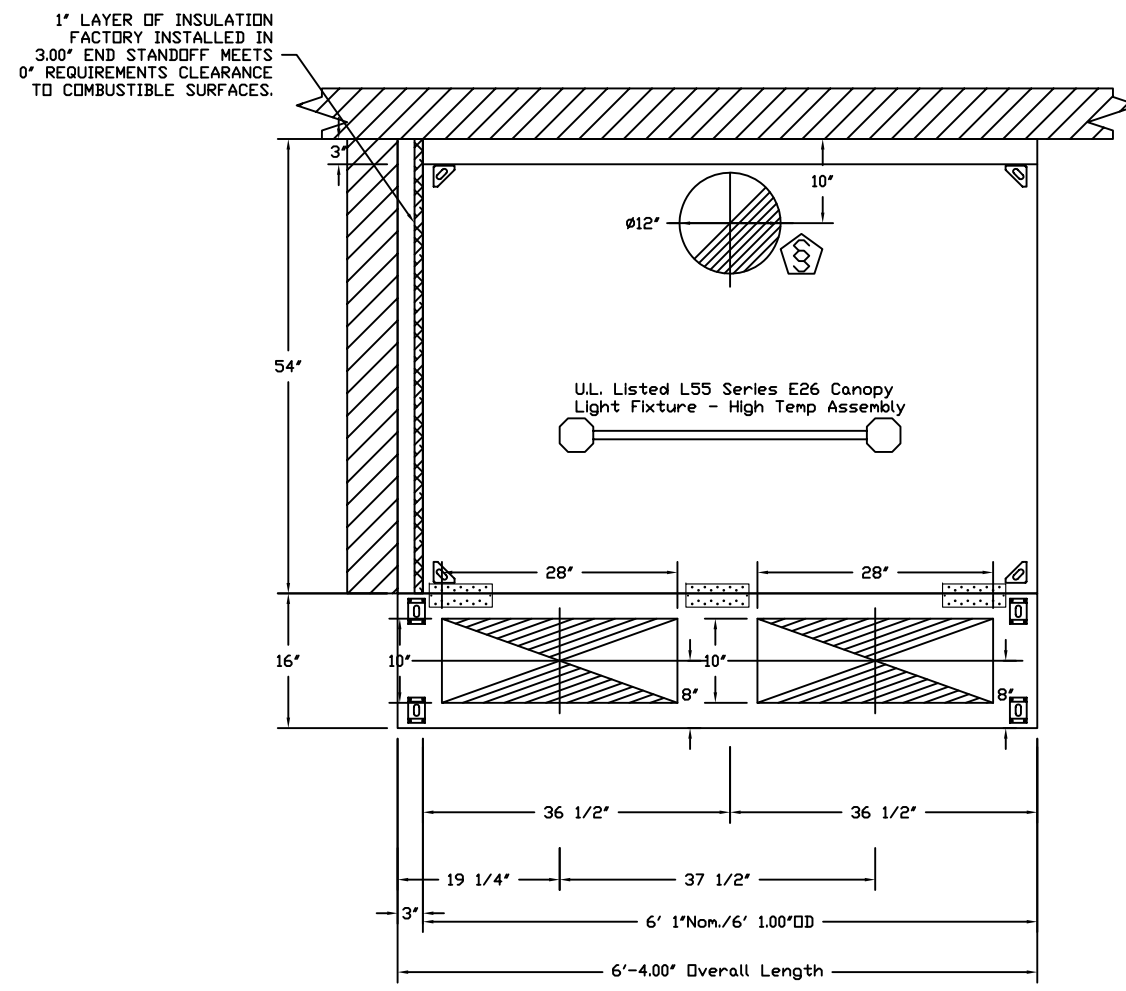
HOOD NO.	TAG	TYPE	FILTER(S)				LIGHT(S)				UTILITY CABINET(S)				FIRE SYSTEM	HOOD WEIGHT
			QTY	HEIGHT	LENGTH	EFFICIENCY @ 7 MICRONS	QTY	TYPE	WIRE GUARD	LOCATION	SIZE	TYPE	SIZE	MODEL #		
1		SS Baffle with Handles	4	20"	16"	30%	2	L55 Series E26	ND						ND	364 LBS

HOOD OPTIONS

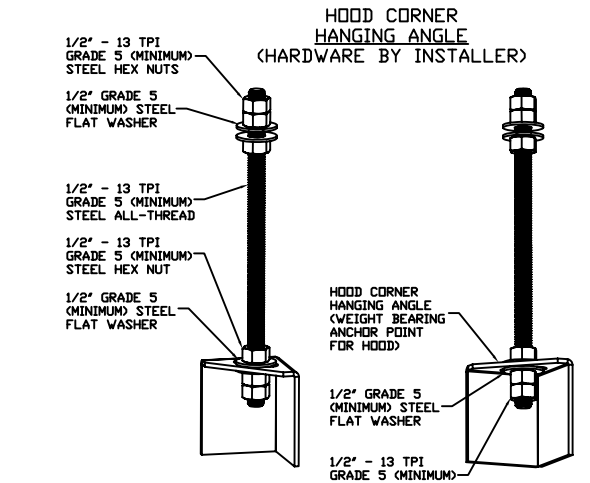
HOOD NO.	TAG	FIELD WRAPPER	18.00" High	Front, Right
1		BACKPLASH	80.00" High X 76.00" Long	430 SS Vertical
		LEFT SIDESPLASH	80.00" High X 54.00" Long	430 SS Vertical
		LEFT END STANDOFF (FINISHED)	3" Wide	54" Long Insulated

PERFORATED SUPPLY PLENUM(S)

HOOD NO.	TAG	POS.	LENGTH	WIDTH	HEIGHT	TYPE	RISER(S)		
							WIDTH	LENG.	DIA.
1		Front	76"	16"	6"	MJA	10"	28"	572
						MJA	10"	28"	572



PLAN VIEW - Hood #1
 6' 1.00" LONG 5424AH-ND-2-PSP-F

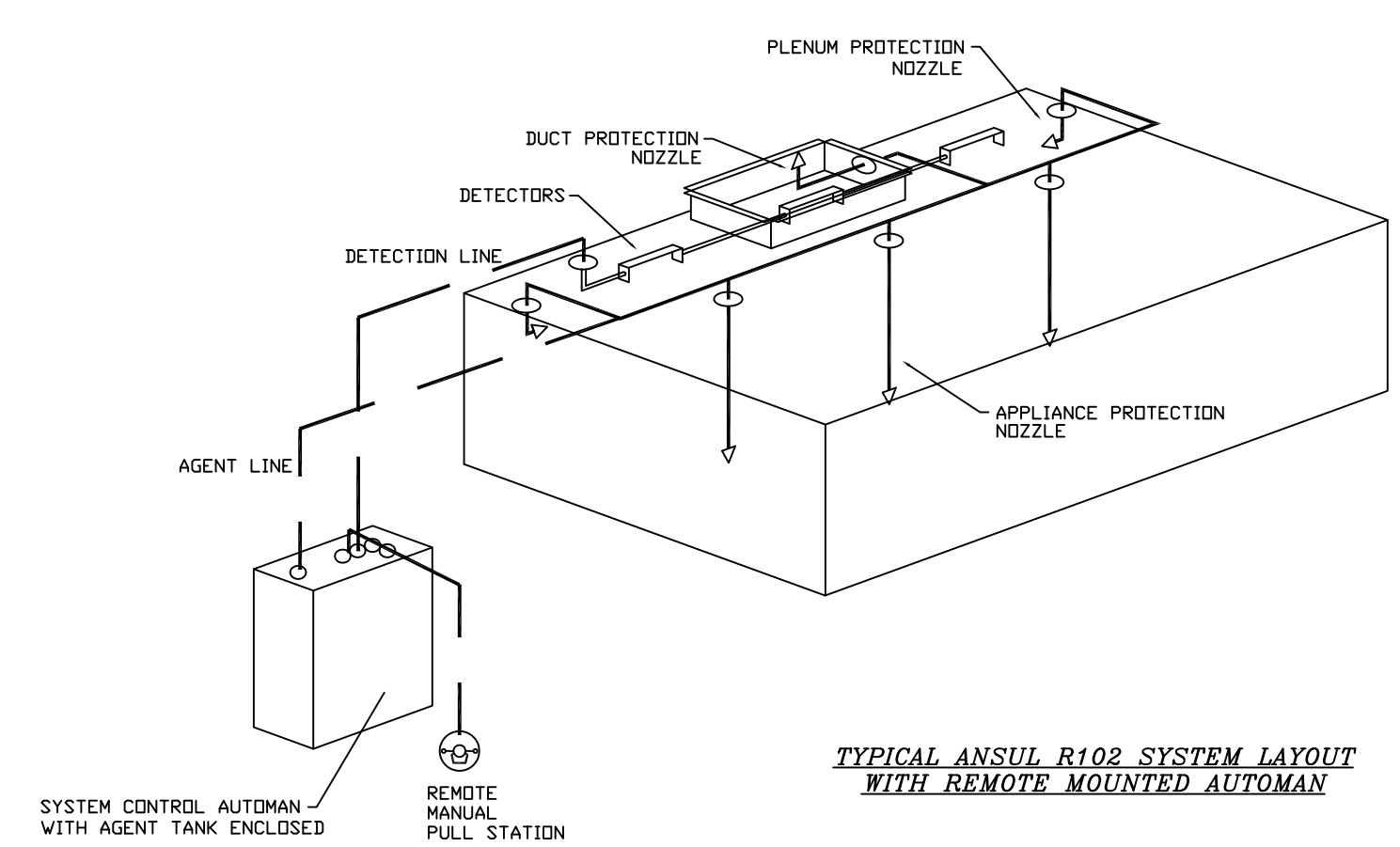


ASSEMBLY INSTRUCTIONS
 HANGING ANGLE MUST BE SUPPORTED WITH 1/2" - 13 TPI GRADE 5 (MINIMUM) ALL-THREAD, SANDWICH HANGING ANGLES AND CEILING ANCHOR POINTS WITH 1/2" GRADE 5 (MINIMUM) STEEL FLAT WASHERS AND 1/2" - 13 TPI GRADE 5 (MINIMUM) HEX NUTS AS SHOWN. MUST USE DOUBLED HEX NUT CONFIGURATION BENEATH HOOD HANGING ANGLES AND ABOVE CEILING ANCHORS. MAINTAIN 1/4" OF EXPOSED THREADS BENEATH BOTTOM HEX NUT. TORQUE ALL HEX NUTS TO 57 FT-LBS.

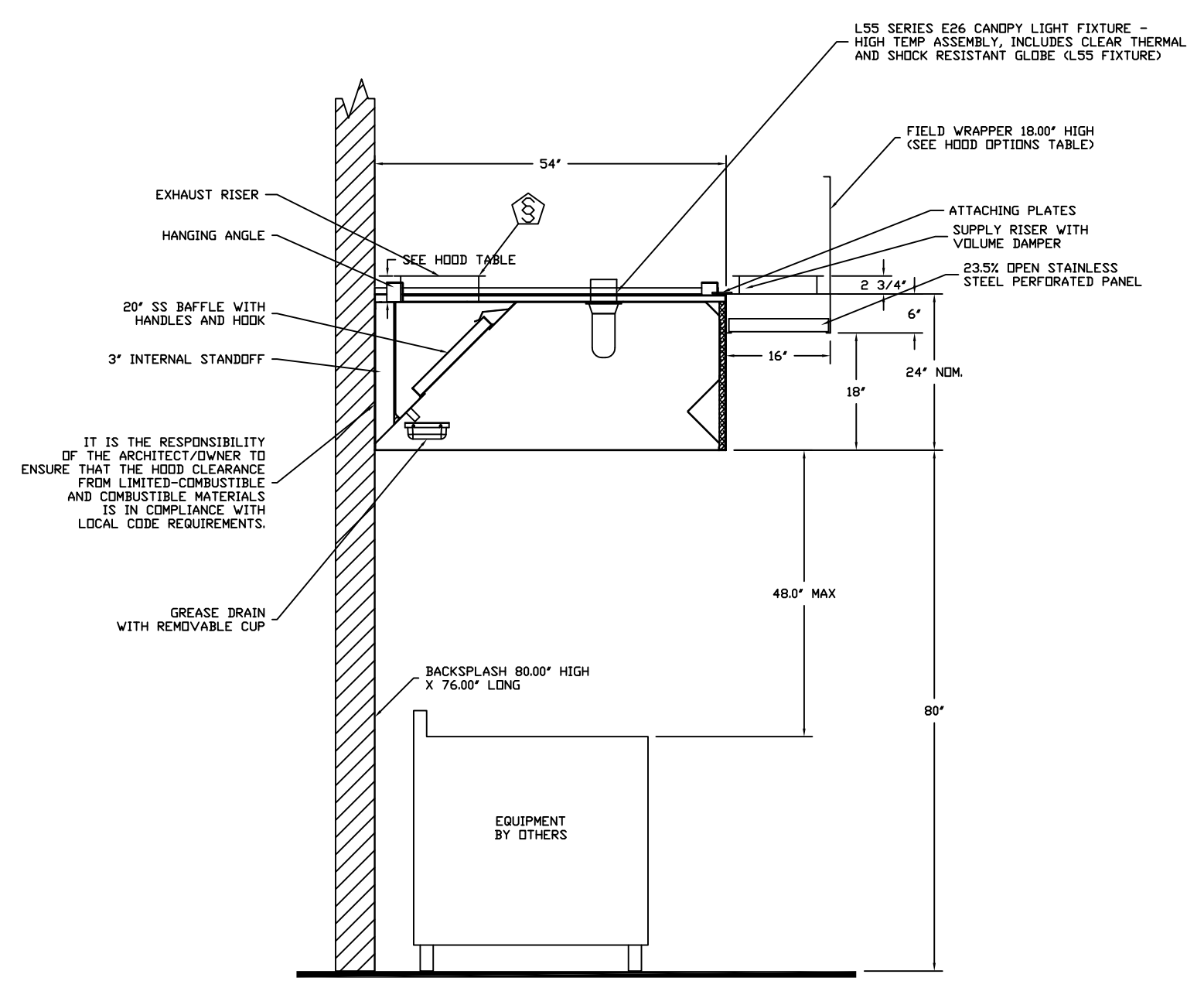
CAPTIVE-AIRE HOODS ARE BUILT IN COMPLIANCE WITH UL 710 AND NFPA 96 AND ARE RECOGNIZED BY ONE OR MORE OF THE FOLLOWING:
 ETL SANITATION LISTED
 ETL LISTED FILE# 3054804-001

Fire System Information - Job#3834639

FIRE SYSTEM NO.	Tag	TYPE	SIZE	FLOW POINTS	INSTALLATION	
					SYSTEM	LOCATION ON HOOD
1		Ansul R102	3.0	0	Wall Mount Left	N/A



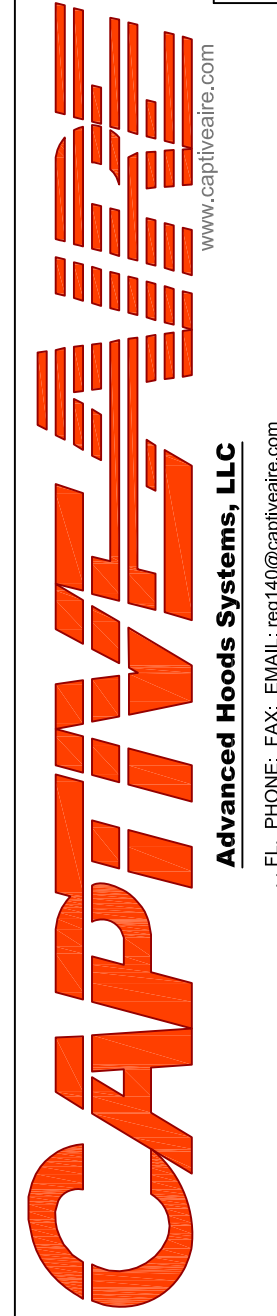
TYPICAL ANSUL R102 SYSTEM LAYOUT WITH REMOTE MOUNTED AUTOMAN



SECTION VIEW - MODEL 5424AH-ND-2-PSP-F HOOD - #1

REVISIONS

NO.	DESCRIPTION	DATE



ALAI A ROOFTOP
 MIAMI, FL,

DATE: 9/18/2019
 DWG.#: 3834639
 DRAWN BY:
 SCALE: 3/4" = 1'-0"
 MASTER DRAWING
 SHEET NO. 1

**Alaia
 Rooftop Kitchen
 Belize**

AUTOGRAPH COLLECTION[®]
 HOTELS

**uni-source
 SUPPLY**
 INTERNATIONAL INC.

2055 W 73rd Street, Miami, FL 33016
 Ph:(305)826-8696 Fax:(305)826-9131

No.	Revision/Issue	Date
1	Preliminary Layout	5-13-19
2	Updates from Owner Comments	5-16-19
3	Added Equipment Services Details	7-15-19
4	Added Make-Up Air to Hood	9-19-19

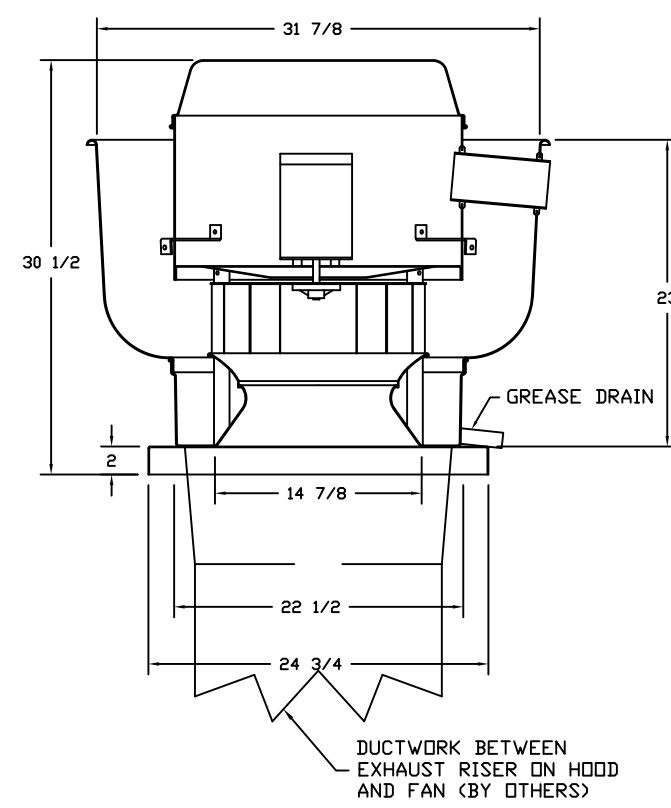
Date
Sept 19 2019
 Drawn By
Dayne Gauntlett
 Scale
NTS

Sheet
FS-6

EXHAUST FAN INFORMATION - Job#3834639

FAN UNIT NO.	TAG	FAN UNIT MODEL #	CFM	ESP.	RPM	HP.	B.H.P.	Ø	VOLT	FLA	DISCHARGE VELOCITY	WEIGHT (LBS.)	SDNES
1		AH-DUBSHFA	1430	1.000	1215	0.750	0.3560	1	115	9.8	453 FPM	98	12B

FAN #1 AH-DUBSHFA - EXHAUST FAN



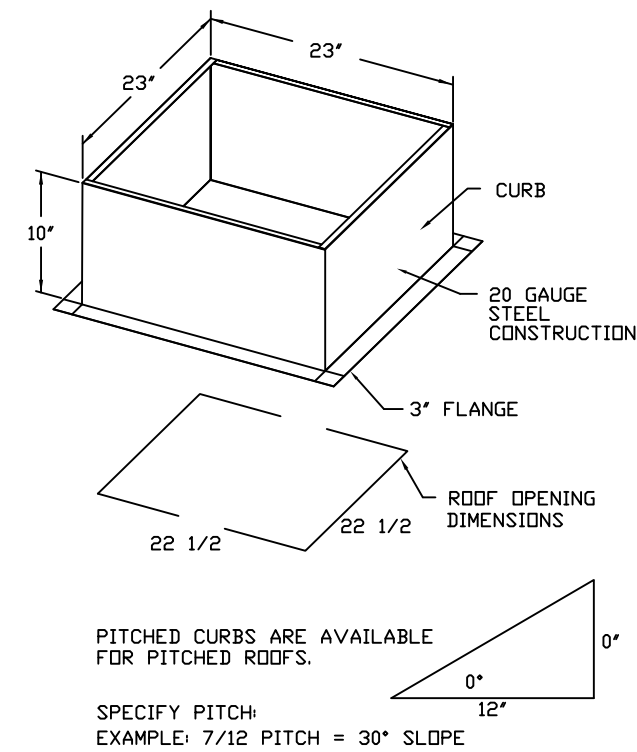
FEATURES:

- DIRECT DRIVE CONSTRUCTION (NO BELTS/PULLEYS)
- ROOF MOUNTED FANS
- RESTAURANT MODEL
- UL795 AND UL752 AND UL6-5645
- VARIABLE SPEED CONTROL
- INTERNAL WIRING
- WEATHERPROOF DISCONNECT
- THERMAL OVERLOAD PROTECTION (SINGLE PHASE)
- HIGH HEAT OPERATION 300°F (149°C)
- GREASE CLASSIFICATION TESTING

NORMAL TEMPERATURE TEST:
EXHAUST FAN MUST OPERATE CONTINUOUSLY WHILE EXHAUSTING AIR AT 300°F (149°C) UNTIL ALL FAN PARTS HAVE REACHED THERMAL EQUILIBRIUM, AND WITHOUT ANY DETRIMENTAL EFFECTS TO THE FAN WHICH WOULD CAUSE UNSAFE OPERATION.

ABNORMAL FLARE-UP TEST:
EXHAUST FAN MUST OPERATE CONTINUOUSLY WHILE EXHAUSTING BURNING GREASE VAPORS AT 600°F (316°C) FOR A PERIOD OF 15 MINUTES WITHOUT THE FAN BECOMING DAMAGED TO ANY EXTENT THAT COULD CAUSE AN UNSAFE CONDITION.

DESIGNS:
GREASE BOX
MIAMI BASE CERTIFICATION - NDA-1
ALUMINUM UPPLAST

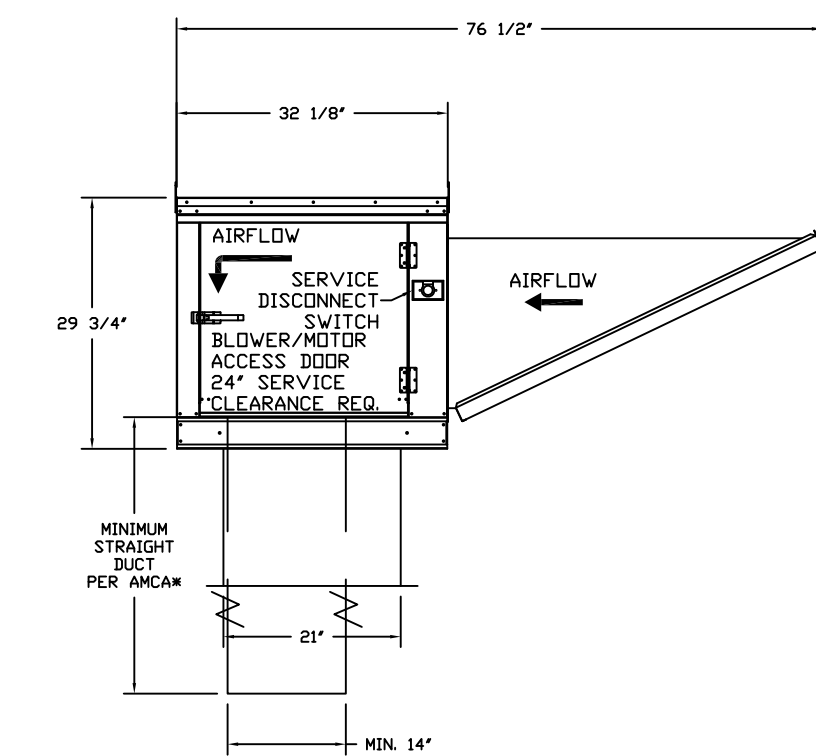
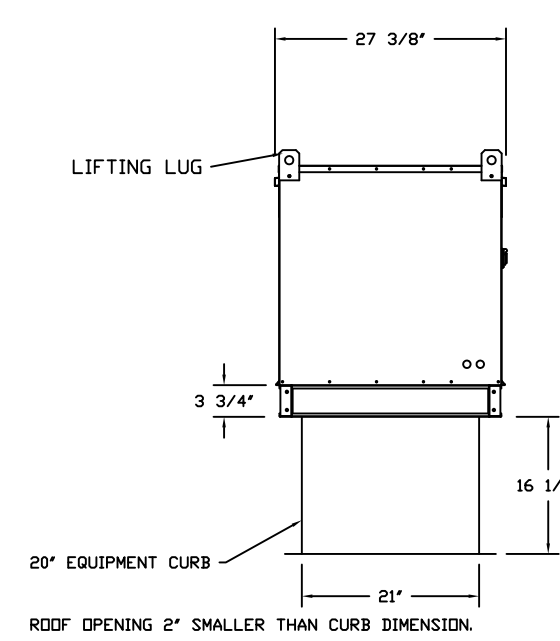
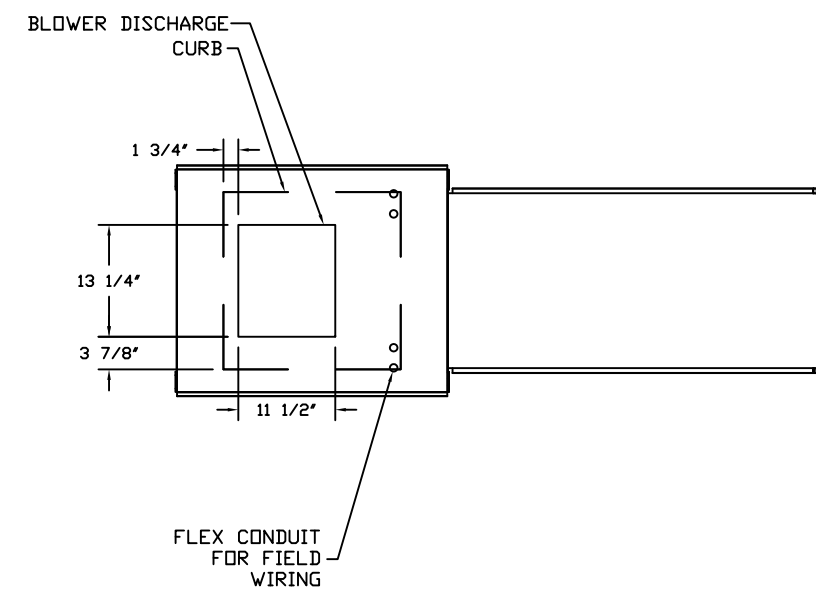


MUA FAN INFORMATION - Job#3834639

FAN UNIT NO.	TAG	FAN UNIT MODEL #	BLOWER HOUSING	MIN CFM	DESIGN CFM	ESP.	RPM	HP.	B.H.P.	Ø	VOLT	FLA	WEIGHT (LBS.)	SDNES	
2		AH-A1-G10D	G10D	A1	0	1144	0.500	812	1.000	0.4270	1	115	10.2	212	16

FAN #2 AH-A1-G10D - SUPPLY FAN
1. DIRECT DRIVE UNDERPANEL SUPPLY UNIT WITH 10" BLOWER IN SIZE #1 HOUSING WITH SPEED CONTROL, DISCONNECT SWITCH
2. INTAKE HOOD WITH EZ FILTERS
3. DOWN DISCHARGE - AIR FLOW RIGHT -> LEFT
4. MIAMI BASE IMPACT AND WIND LOAD CERTIFICATION +30 / -130 PSF - MIAMI BASE COUNTY PRODUCT CONTROL APPROVED
FLORIDA BUILDING CODE APPROVAL - ROOF MOUNT EXHAUST CURBS UP TO 20" HIGH MUST BE 16 GAUGE ALUMINUM
5. ECM WIRING PACKAGE AND MANUAL OR E-TOUCH CONTROL FOR SUPPLY EC MOTORS. RTC CONTROLLER. **DO NOT ORDER UNDER WARRANTY. SEE PART NUMBER: ECM-VCU-RTC**

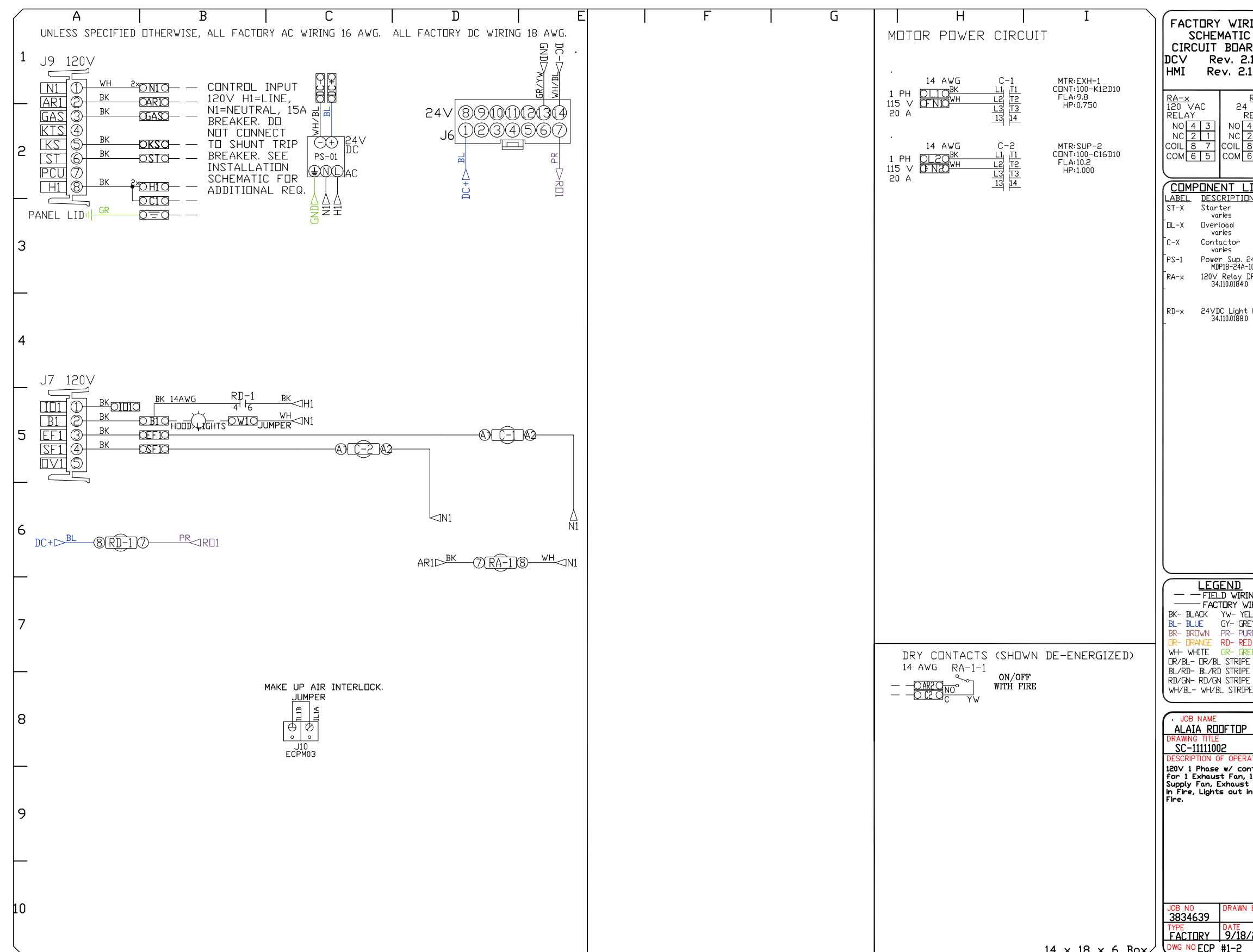
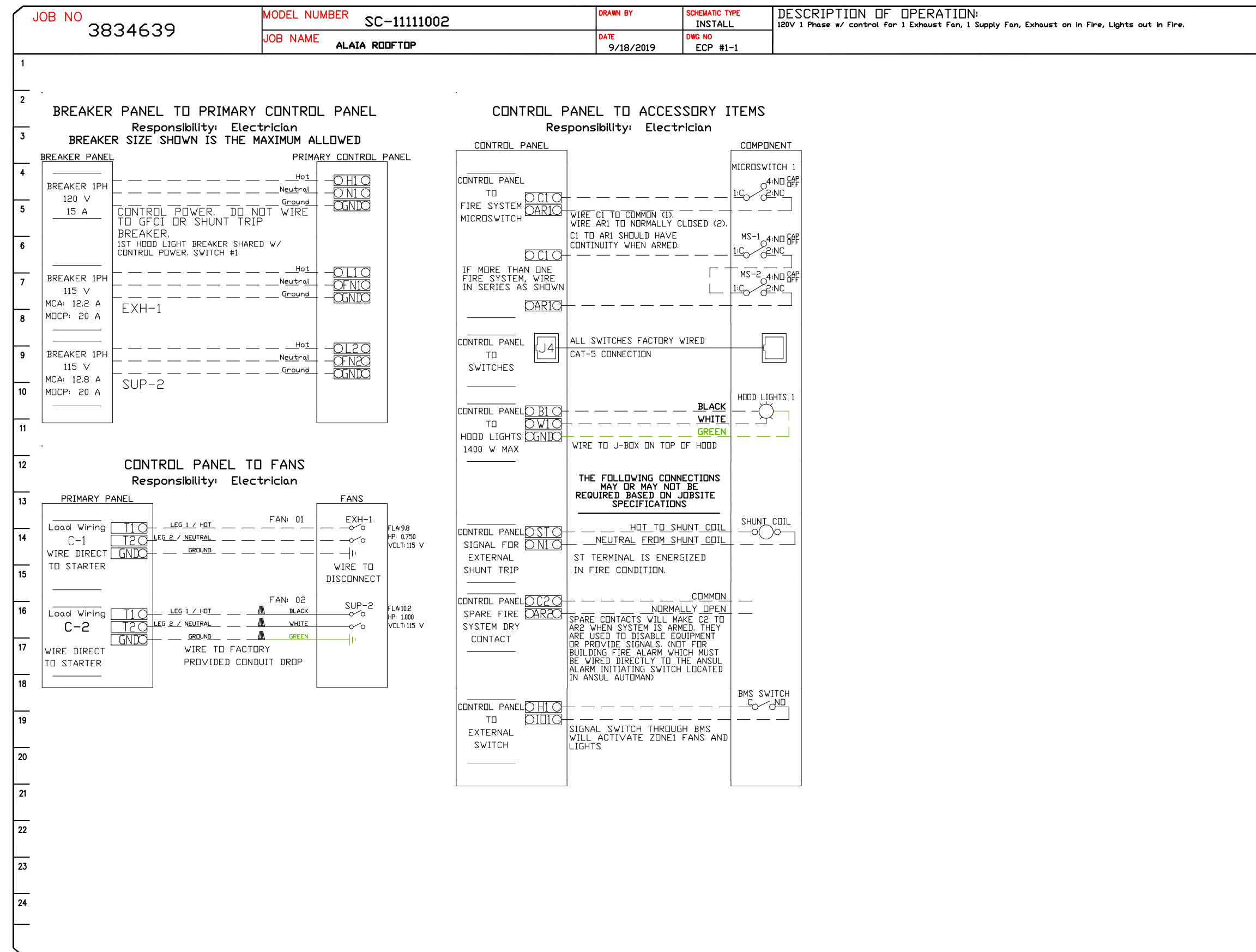
NOTE: SUPPLY DUCT MUST BE INSTALLED TO MEET SMACNA STANDARDS A MINIMUM STRAIGHT DUCT LENGTH MUST BE MAINTAINED DOWNSTREAM OF UNIT DISCHARGE AS OUTLINED IN ANCA PUBLICATION 201. DO NOT RELY ON UNIT TO SUPPORT DUCT IN ANY WAY. FAILURE TO PROPERLY SIZE DUCTWORK MAY CAUSE SYSTEM EFFECTS AND REDUCE PERFORMANCE OF THE EQUIPMENT. SUGGESTED STRAIGHT DUCT SIZE IS 14" x 14"



PITCHED CURBS ARE AVAILABLE FOR PITCHED ROOFS.
SPECIFY PITCH.
EXAMPLE: 7/12 PITCH = 30° SLOPE

ELECTRICAL PACKAGE - Job#3834639

NO.	TAG	PACKAGE #	LOCATION	SWITCHES		OPTION	FANS CONTROLLED									
				LOCATION	QUANTITY		TYPE	Ø	HP.	VOLT	FLA					
1		SC-1111002	Wall Mount In SS Box	05 - SS Wall Mount Box	1 Light	Smart Controls Basic	Exhaust	1	0.750	115	9.8	Supply	1	1.000	115	10.2



REVISIONS

NO.	DESCRIPTION	DATE
1		
2		
3		
4		
5		
6		
7		
8		
9		
10		
11		
12		
13		
14		
15		
16		
17		
18		
19		
20		
21		
22		
23		
24		

CAPTIVE
Advanced Hoops Systems, LLC
www.captivehoops.com
FL PHONE: FAX EMAIL: rjg@captivesystems.com

ALAI A ROOFTOP
MIAMI, FL,

uni-source SUPPLY
INTERNATIONAL INC.
2055 W 73rd Street, Miami, FL 33016
Ph: (305)826-8696 Fax: (305)826-9131

No.	Revision/Issue	Date
1	Preliminary Layout	5-13-19
2	Updates from Owner Comments	5-16-19
3	Added Equipment Services Details	7-15-19
4	Added Make-Up Air to Hood	9-19-19

Date
Sept 19 2019
Drawn By
Dayne Gauntlett
Scale
NTS

Sheet
FS-7

SHEET NO.
2