

EQUIPMENT SCHEDULE					
ItemNo	Category	Mfr	Model	Quantity	Equipment Remarks
1	Washer Extractor	UNIMAC	UWL065T2M	1	
2	Washer Extractor	UNIMAC	UWL130T4V	2	
3	Drying Tumbler	UNIMAC	UT075-L-RQ	1	
4	Drying Tumbler	UNIMAC	UT170-L-RU	2	
5	Work Table, Stainless Steel Top	Advance Tabco	TSS-488	1	
6	Vacuum Board	EuroFinish	PND-1000AC	1	
6.1	Mini Boiler & Iron	EuroFinish	SVP-24	1	
7	One (1) Compartment Sink	Advance Tabco	FC-1-1620	1	
7.1	Wall / Splash Mount Faucet	Krowne	14-810L	1	
9	Round Trip Carts	Steele	P8592	2	
11	Cart, Laundry	Steele	092020	4	
12	Wire Shelving Unit	NEXEL	24606N	6	
13	Flatwork Ironer	ChDryer	TGO-16-136	1	
99	Chemical Pump	Ecolab	CHEM	3	

# EQUIPMENT LAYOUT

All Dimensions to be verified on the job site.  
Actual locations for floor drains, and any ventilating equipment to be determined by Engineer.  
Mechanical, Plumbing & Electrical to be checked and verified by Customers MEP Engineer.  
Remote Condensing Units to be located by Architect.  
Exhaust & Supply fans to be located by Architect.

Rok Hotel Kingston

Laundry

Kingston, Jamaica

TAPESTRY COLLECTION  
BY HILTON™

uni-source  
SUPPLY

INTERNATIONAL INC.

2055 W 73rd Street, Miami, FL 33016  
Ph:(305)826-8696 Fax:(305)826-9131

3	Updated Backgrounds from Architect	7-05-19
4	Updated Backgrounds from Architect received 1-27-20	2-7-20
5	Updated Backgrounds from Architect received 7-29-20	7-31-20
6	Updated Backgrounds from Architect received 3-19-21	3-24-21
No.	Revision/Issue	Date

Date

March 24, 2021

Drawn By

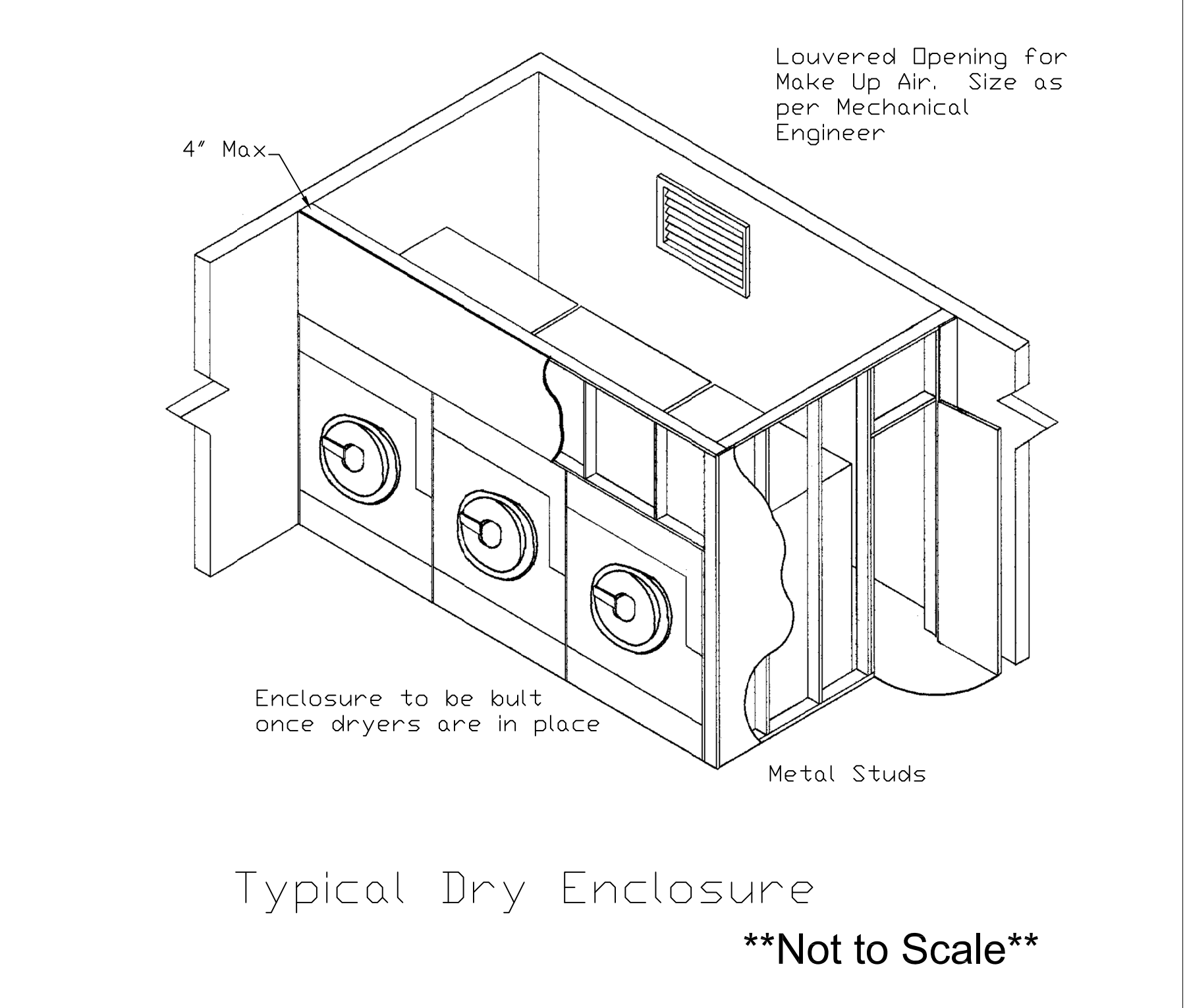
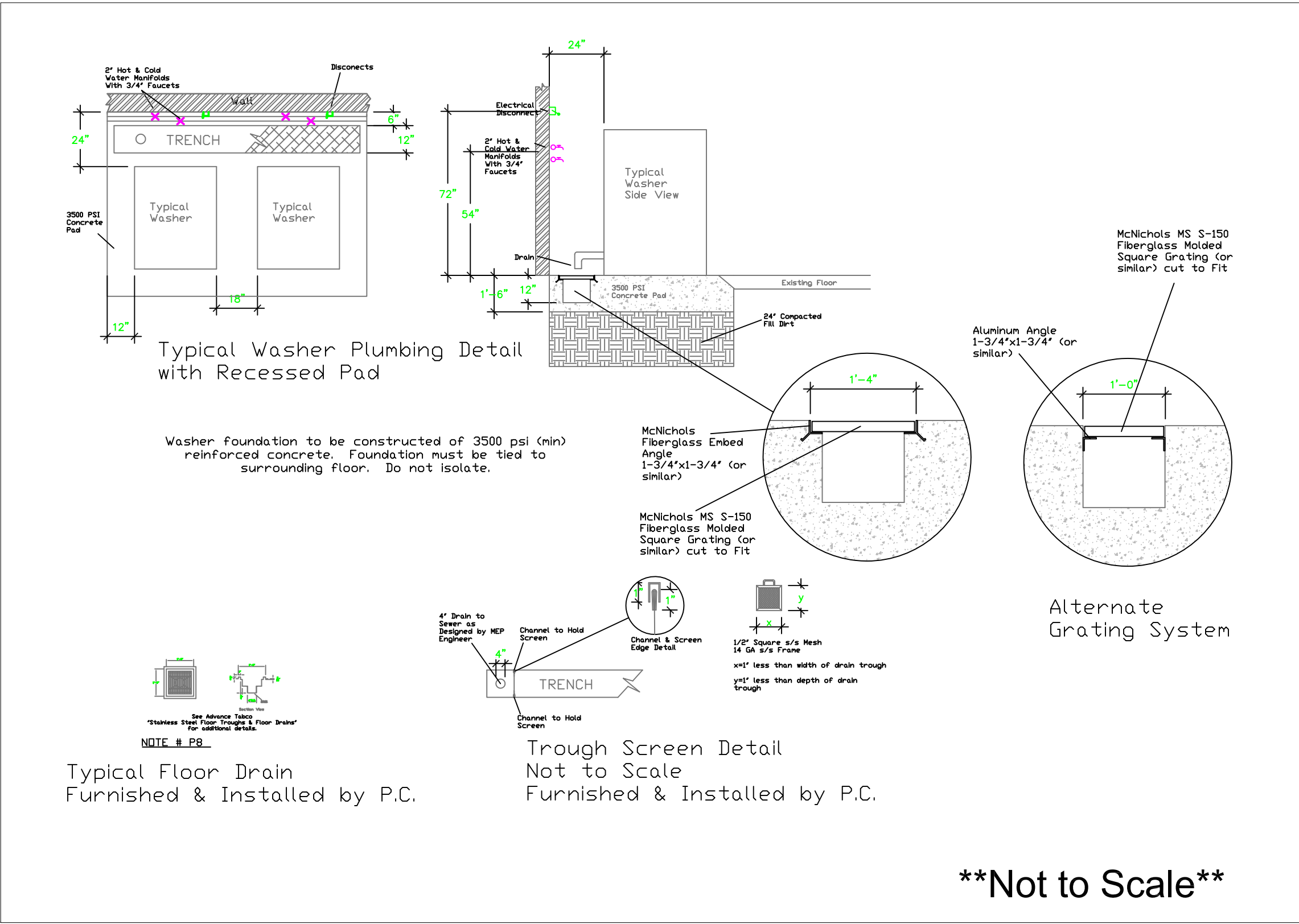
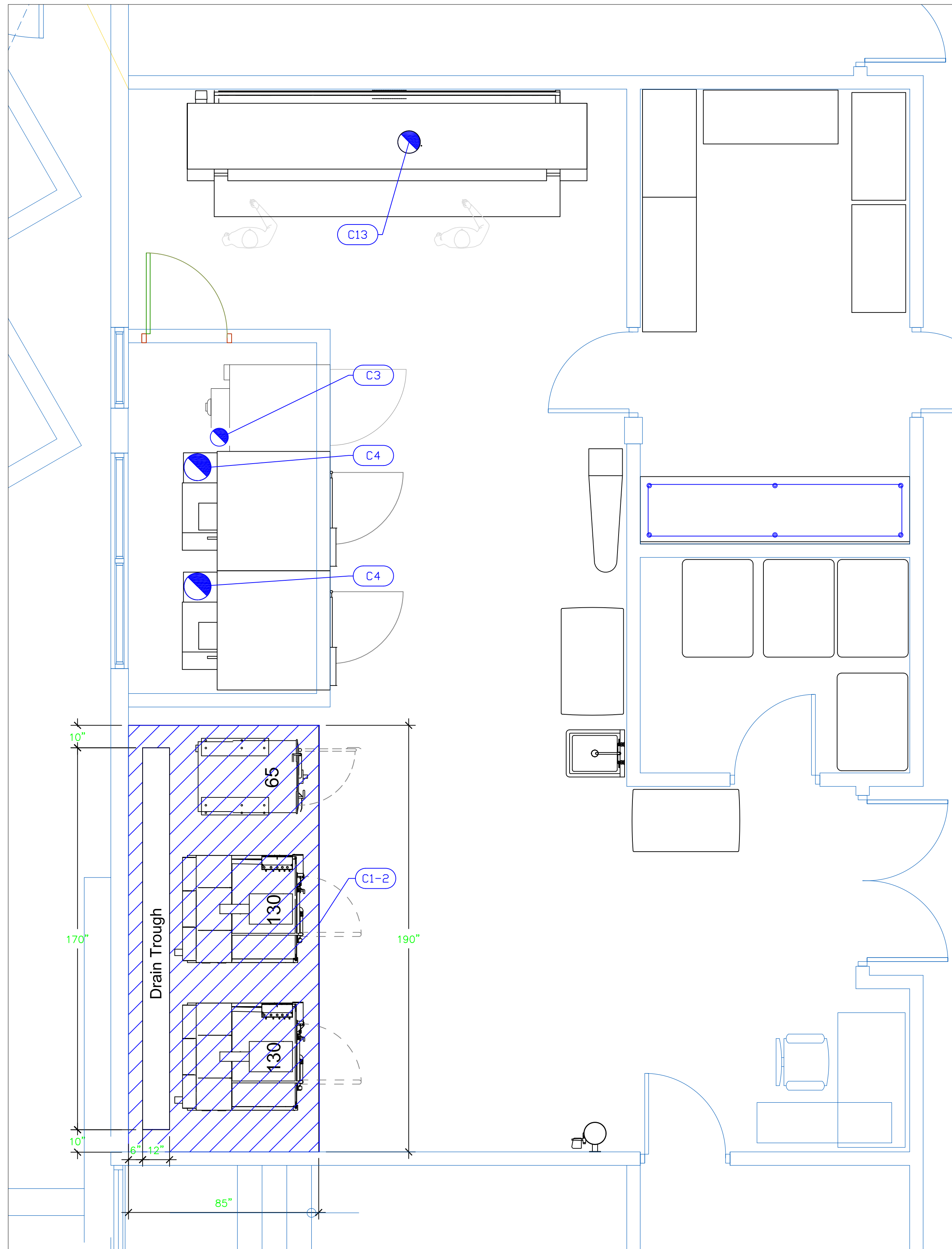
Dayne Gauntlett

Scale

3/8" = 1'0"

Sheet

LL-1



- LEGEND – MECHANICAL
- EXHAUST DUCT COLLAR
  - SUPPLY DUCT COLLAR
  - INWALL BACKING FOR WALL SHELVES
  - RECESSED FLOOR
  - REINFORCED FLOOR Min.3500PSI
  - RAISED EQUIPMENT PAD

Mechanical Schedule							
ITEM NO.	QTY	DISCRIPTION	EXHAUST (L X W)	EXHAUST (CFM)	SUPPLY (L X W)	SUPPLY (CFM)	Ventilation Remarks
1	1	Washer Extractor					Reinforced Concrete Pad
2	2	Washer Extractor					Reinforced Concrete Pad
3	1	Drying Tumbler	8" Dia	750			Enclose Dryers, Makeup from Outside
4	2	Drying Tumbler	12" Dia	2450			Enclose Dryers, Makeup from Outside
13	1	Flatwork Ironer	10" Dia	1450			

NOTE # M5  
ALL NATIONAL, STATE, AND LOCAL CODES SHALL APPLY

NOTE # M6  
ARCHITECT OR ENGINEER TO SIZE AND LOCATE, CONTRACTOR TO PROVIDE ALL OPENINGS FOR DUCTS, PLUMBING LINES, ELECTRICAL LINES, AND REFRIGERATION LINES, AS REQUIRED BY EQUIPMENT.

NOTE # M7  
SUPPLY FANS TO BE LOCATED A MINIMUM OF 10' FROM EXHAUST FANS.

NOTE # M8  
SHOP DRAWING WILL BE PROVIDED BY MANUFACTURER FOR HEED, EXHAUST FANS, & SUPPLY FANS, UNCE ORDER IS PLACE WITH.

NOTE # M9  
GENERAL CONTRACTOR TO PROVIDE 2" PLYWOOD WALL BACKING FROM 48" TO 78" AFF FOR ALL WALL MOUNTED EQUIPMENT.

NOTE # M10  
CEILING HEIGHTS TO BE VERIFIED FOR SUFFICIENT CLARENCE FOR EQUIPMENT.

NOTE # M11  
REFRIGERATION CONTRACTOR TO HANG EVAPORATORS FOR WALK-IN, RUN & CHARGE LINES BETWEEN EVAP. & CONDENSING UNIT.

### Equipment MECHANICAL Service Requirements

All Dimensions to be verified on the job site. Actual locations for floor drains, and any ventilating equipment to be determined by Engineer. Mechanical, Plumbing & Electrical to be checked and verified by Customers MEP Engineer. Remote Condensing Units to be located by Architect. Exhaust & Supply fans to be located by Architect.

**Rok Hotel Kingston**  
**Laundry**  
**Kingston, Jamaica**

TAPESTRY COLLECTION  
BY HILTON™

**uni-source**  
SUPPLY  
INTERNATIONAL INC.

2055 W 73rd Street, Miami, FL 33016  
Ph:(305)826-8696 Fax:(305)826-9131

3	Updated Backgrounds from Architect	7-05-19
4	Updated Backgrounds From Architect received 1-27-20	2-7-20
5	Updated Backgrounds from Architect received 7-29-20	7-31-20
6	Updated Backgrounds from Architect received 3-19-21	3-24-21
No.	Revision/Issue	Date

Date  
**March 24, 2021**

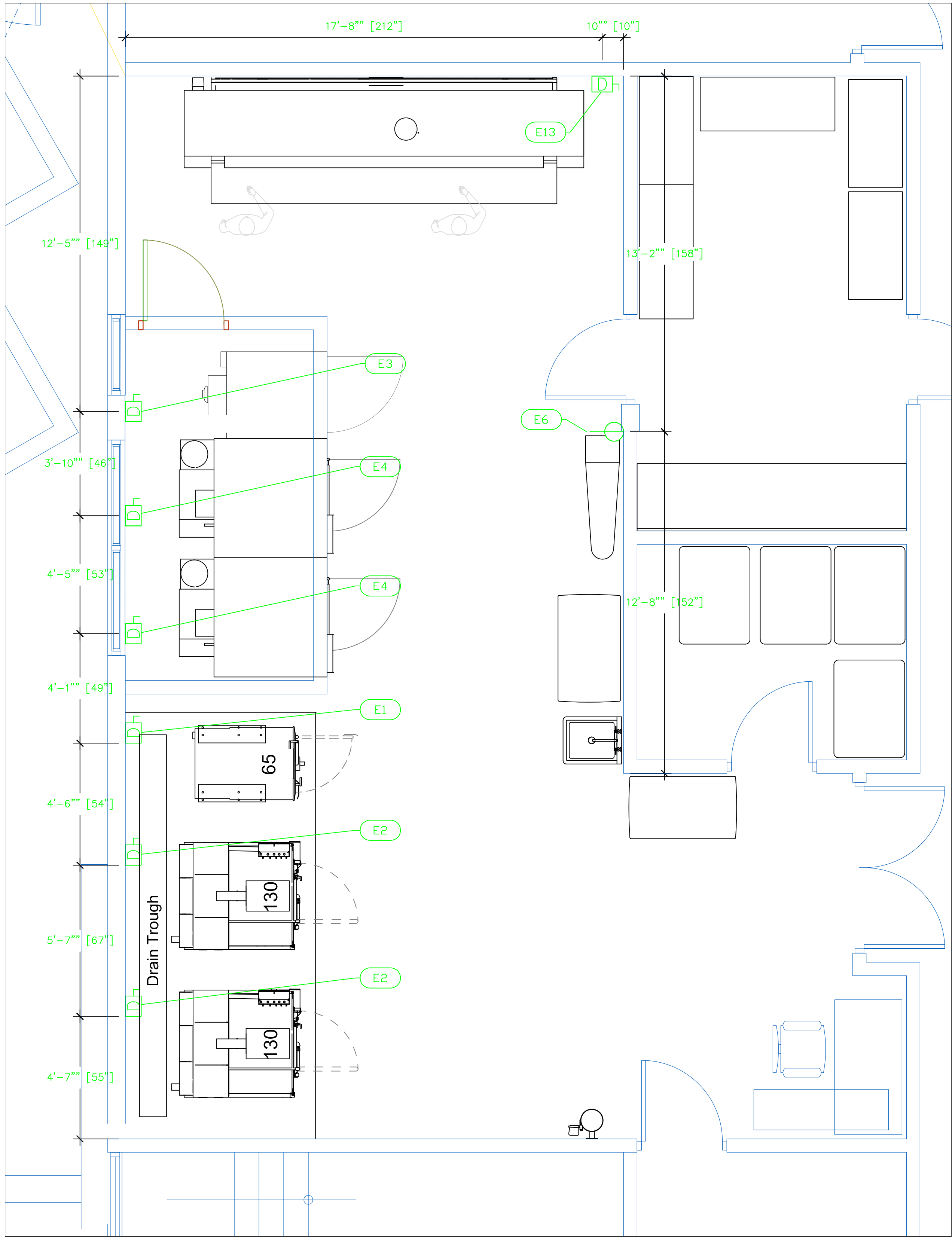
Drawn By  
**Dayne Gauntlett**

Scale  
**3/8" = 1'0"**

Sheet  
**LL-2**

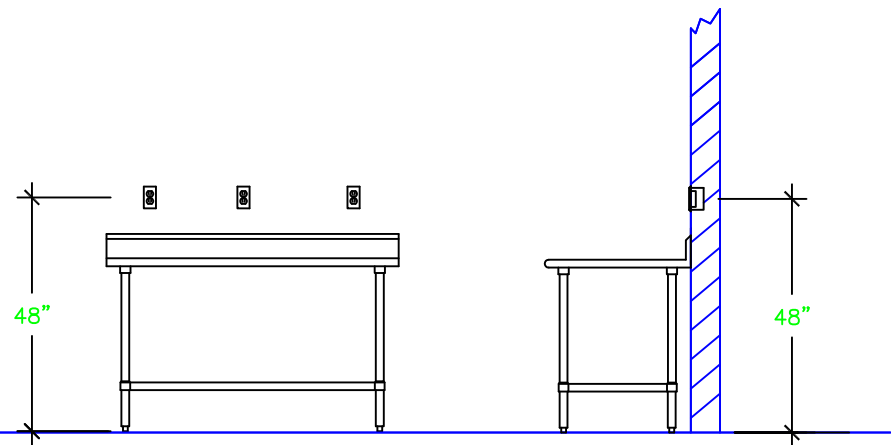


ELECTRICAL SCHEDULE											
ItemNo	Category	Voltage	Cycle	Phase	Amps	Hp	NEMA	ConnectionType	Rough-In AFF	Quantity	Electrical Remarks
1	Washer Extractor	200-240	50-60	3	9	5		Disconnect	72"	1	
2	Washer Extractor	200-240	50-60	3	21	10		Disconnect	72"	2	
3	Drying Tumbler	200-240	50-60	3	4.3			Disconnect	72"	1	
4	Drying Tumbler	200-240	50-60	3	13.5			Disconnect	72"	2	
5	Work Table, Stainless Steel Top	115	50	1	15			Duplex	48"	1	Convenience Outlet, See Note P1
6	Vacuum Board	115	60	1	6			Simplex	18"	1	
6.1	Mini Boiler & Iron	115	60	1	15			Simplex	18"	1	
13	Flatwork Ironer	208-230	50-60	3	7.5			Disconnect	72"	1	
99	Chemical Pump	120	60	1	15			Simplex	66"	3	



LEGEND - ELECTRICAL CONNECTIONS

- DUPLEX RECEPT., 15-AMP, 120-VOLT, GROUND TYPE, HORIZONTAL MOUNT
- SIMPLEX RECEPT., 120-VOLT, GROUND TYPE, HORIZONTAL MOUNT
- SPECIAL PURPOSE OUTLET, GROUND TYPE, HORIZONTAL MOUNT
- JUNCTION BOX, DIRECT CONNECTION
- DISCONNECT SWITCH, DIRECT CONNECTION
- FLOOR/CEILING RECEPTACLE AS INDICATED
- (2) Telephone + (2) Data
- FIELD CONNECTIONS
- HARD WIRE CONNECTION POINT AT MACHINE



NOTE # E1  
TYPICAL OUTLETS IN WALL  
ABOVE TABLE, BY ELECTRICIAN  
NOT TO SCALE

NOTE # E2  
ALL NATIONAL, STATE, AND LOCAL  
CODES SHALL APPLY

NOTE # E3  
ALL ELECTRICAL CONNECTIONS  
AND HARDWARE REQUIRED TO BE  
PROVIDED BY ELECTRICAL  
CONTRACTOR

NOTE # E4  
ALL JUNCTION BOXES, OUTLETS,  
ETC. TO BE LOCATED SO AS TO  
NOT INTERFERE WITH EQUIPMENT

NOTE # E5  
ALL RELAYS, CONTRACTORS,  
STARTERS, AND SWITCHES  
REQUIRED FOR EXHAUST & SUPPLY  
FANS TO BE PROVIDED BY  
ELECTRICAL CONTRACTOR  
UNLESS SPECIFIED

NOTE # E6  
ELECTRICAL CONTRACTOR TO  
INTERCONNECT DISHMACHINE TO  
EXHAUST FAN FOR DISHMACHINE  
SO THAT THE FAN RUNS WHEN  
THE DISHMACHINE IS IN  
OPERATION.

NOTE # E7  
ELECTRICAL CONTRACTOR TO  
INSTALL TABLE LIMIT SWITCH TO  
END OF CLEAN DISHTABLE TO  
THAT MACHINE STOPS WHEN  
SWITCH IS DEPRESSED.

NOTE # E8  
ELECTRICAL CONTRACTOR TO  
CONNECT DRAIN LINE HEATER,  
PAN HEATER AND DOOR HEATER  
FOR WALK-IN FREEZER.

## Equipment ELECTRICAL Service Requirements

All Dimensions to be verified on the job site.  
Actual locations for floor drains, and any ventilating  
equipment to be determined by Engineer.  
Mechanical, Plumbing & Electrical to be checked and verified  
by Customers MEP Engineer.  
Remote Condensing Units to be located by Architect.  
Exhaust & Supply fans to be located by Architect.

Rok Hotel Kingston  
Laundry  
Kingston, Jamaica

TAPESTRY  
COLLECTION  
BY HILTON™

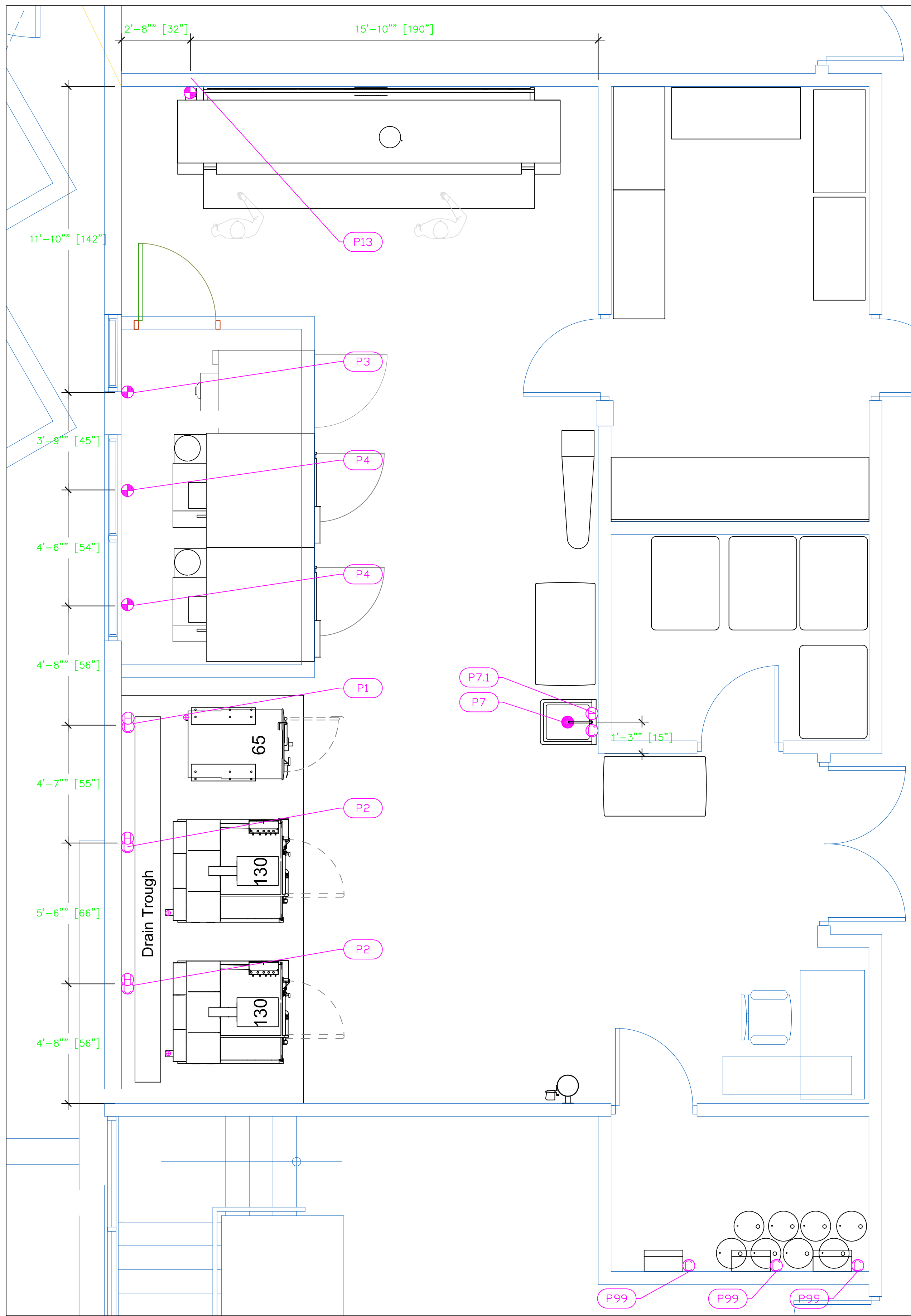
uni-source  
SUPPLY  
INTERNATIONAL INC.

2055 W 73rd Street, Miami, FL 33016  
Ph:(305)826-8696 Fax:(305)826-9131

3	Updated Backgrounds from Architect	7-05-19
4	Updated Backgrounds from Architect received 1-27-20	2-7-20
5	Updated Backgrounds from Architect received 7-29-20	7-31-20
6	Updated Backgrounds from Architect received 3-19-21	3-24-21
No.	Revision/Issue	Date

Date  
March 24, 2021  
Drawn By  
Dayne Gauntlett  
Scale  
3/8" = 1'0"

Sheet  
LL-3



PLUMBING SCHEDULE												
ITEM NO.	DESCRIPTION	COLD WATER SIZE	HOT WATER SIZE	H&C ROUGH-IN	DIRECT WASTE SIZE	DIRECT WASTE AFF	INDIRECT WASTE SIZE	GAS SIZE(IN)	GAS CONN. AFF	GAS MBTU	QTY	PLUMBING REMARKS
1	Washer Extractor	3/4"	3/4"	54"			3"				1	
2	Washer Extractor	3/4"	3/4"	54"			3"				1	
3	Drying Tumbler							1/2"	66"	165	1	
4	Drying Tumbler							1"	66"	395	2	
7	One (1) Compartment Sink				1-1/2"	24"					1	
7.1	Wall / Splash Mount Faucet	1/2"	1/2"	12"							1	
13	Flatwork Ironer							1"	66"	260	1	
99	Chemical Pump	5/8"		24"							3	Garden hose Bib

NOTE # P8  
TYPICAL FLOOR SINK  
NOT TO SCALE

NOTE # P2  
TYPICAL INDIRECT DRAIN  
PLUMBING  
NOT TO SCALE

NOTE # P3  
TYPICAL GAS LINE PLUMBING  
NOT TO SCALE

**LEGEND — PLUMBING CONNECTIONS**

- ○ HW-HOT WATER, OR CW-COLD WATER
- GAS
- WASTE, DIRECT-CONNECTED
- WASTE, INDIRECT to Floor Sink
- FLOOR DRAIN Josam 30000-A3
- FUNNEL FLOOR DRAIN Josam 30000-E3

**Equipment PLUMBING Service Requirements**

All Dimensions to be verified on the job site. Actual locations for floor drains, and any ventilating equipment to be determined by Engineer. Mechanical, Plumbing & Electrical to be checked and verified by Customers MEP Engineer. Remote Condensing Units to be located by Architect. Exhaust & Supply fans to be located by Architect.

NOTE # P4  
ALL NATIONAL, STATE, AND LOCAL CODES SHALL APPLY

NOTE # P5  
ALL PLUMBING CONNECTIONS TO BE EXTENDED AND INTERCONNECTED TO EQUIPMENT AND ALL HARDWARE REQUIRED TO BE PROVIDED BY PLUMBING CONTRACTOR

NOTE # P6  
PLUMBING CONTRACTOR TO VERIFY THAT ALL EQUIPMENT IS INSTALLED WITH THE APPROPRIATE GAS PRESSURE AND REGULATORS

NOTE # P7  
ALL WASTE LINES AND CONDENSATE LINES TO BE EXTEND FROM EQUIPMENT TO FLOOR DRAINS BY PLUMBING CONTRACTOR.

**Rok Hotel Kingston**  
**Laundry**  
**Kingston, Jamaica**

**TAPESTRY COLLECTION**  
BY HILTON™

**uni-source SUPPLY**  
INTERNATIONAL INC.

2055 W 73rd Street, Miami, FL 33016  
Ph:(305)826-8696 Fax:(305)826-9131

3	Updated Backgrounds from Architect	7-05-19
4	Updated Backgrounds from Architect received 1-27-20	2-7-20
5	Updated Backgrounds from Architect received 7-29-20	7-31-20
6	Updated Backgrounds from Architect received 3-19-21	3-24-21
No.	Revision/Issue	Date

Date  
**March 24, 2021**

Drawn By  
**Dayne Gauntlett**

Scale  
**3/8" = 1'0"**

Sheet  
**LL-4**