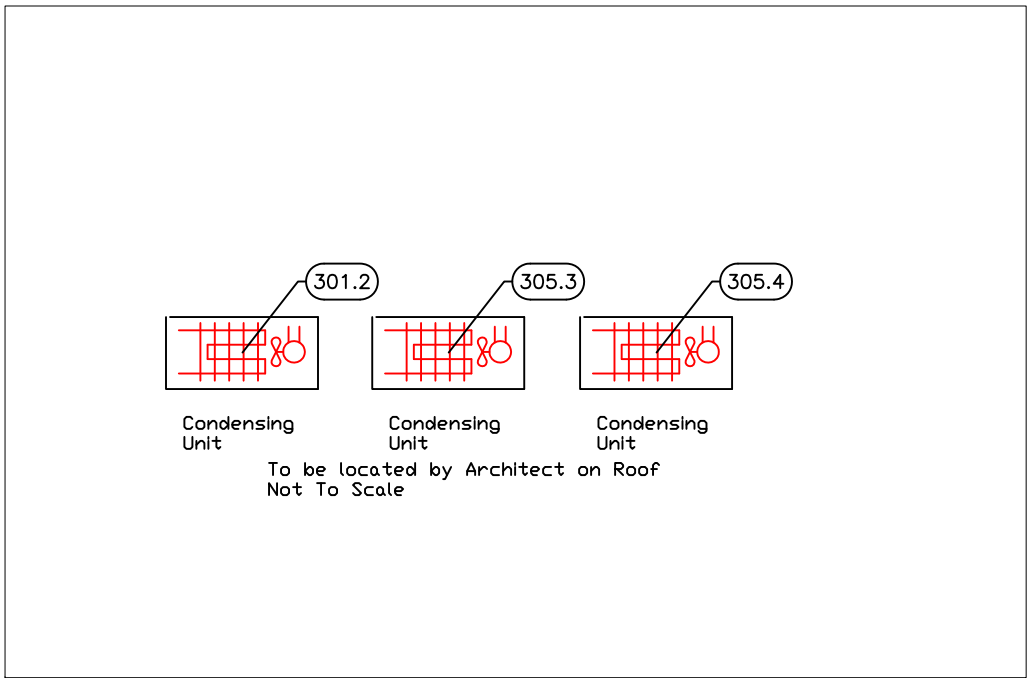


| EQUIPMENT SCHEDULE | | | | | |
|--------------------|-----------------------------------|-------------------|-----------|----------|-------------------|
| ItemNo | Category | Mfr | Model | Quantity | Equipment Remarks |
| 301 | Walk-in Cooler | Arctic Industries | CUSTOM | 1 | |
| 301.1 | Evaporator for Cooler | Arctic Industries | EVAP | 1 | |
| 301.2 | Remote Condenser Unit for Cooler | Arctic Industries | COND | 1 | |
| 302 | Wire Shelving Unit | GLOBAL INDUSTRIAL | 18486N | 4 | |
| 305 | Walk-in Combo | Arctic Industries | CUSTOM | 1 | |
| 305.1 | Evaporator for Cooler | Arctic Industries | EVAP | 1 | |
| 305.2 | Evaporator for Freezer | Arctic Industries | EVAP | 1 | |
| 305.3 | Remote Condenser Unit for Cooler | Arctic Industries | COND | 1 | |
| 305.4 | Remote Condenser Unit for Freezer | Arctic Industries | COND | 1 | |
| 306 | Wire Shelving Unit | GLOBAL INDUSTRIAL | 18486N | 4 | |
| 307 | Wire Shelving Unit | GLOBAL INDUSTRIAL | 18486N | 4 | |
| 308 | Wire Shelving Unit | GLOBAL INDUSTRIAL | 18606N | 12 | |
| 311 | Platform Truck | Lakeside | 455 | 2 | |
| 312 | Work Table, Stainless Steel Top | Advance Tabco | KMS-304 | 1 | |
| | Weld-in Sink | Advance Tabco | TA-11A | 1 | |
| 312.1 | Deck Mount Faucet | Krowne | 15-410L | 1 | |
| 314 | Receiving Scale | Detecto | 5852F-190 | 1 | |
| 316 | Hose Reel | T&S Brass | B-1459 | 1 | |
| 317 | Wire Shelving Unit | GLOBAL INDUSTRIAL | 18606N | 9 | |



EQUIPMENT LAYOUT

All Dimensions to be verified on the job site.
Actual locations for floor drains, and any ventilating equipment to be determined by Engineer.
Mechanical, Plumbing & Electrical to be checked and verified by Customers MEP Engineer.
Remote Condensing Units to be located by Architect.
Exhaust & Supply fans to be located by Architect.

Rok Hotel Kingston
Bulk F&B Area
Kingston, Jamaica

TAPESTRY
COLLECTION
BY HILTON™

uni-source
SUPPLY

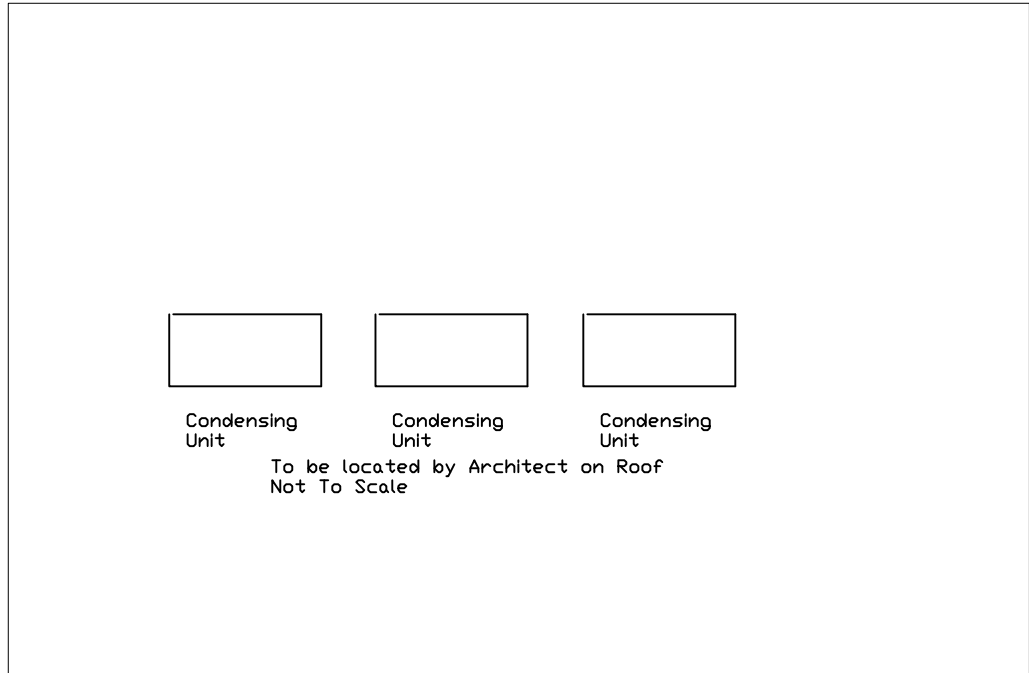
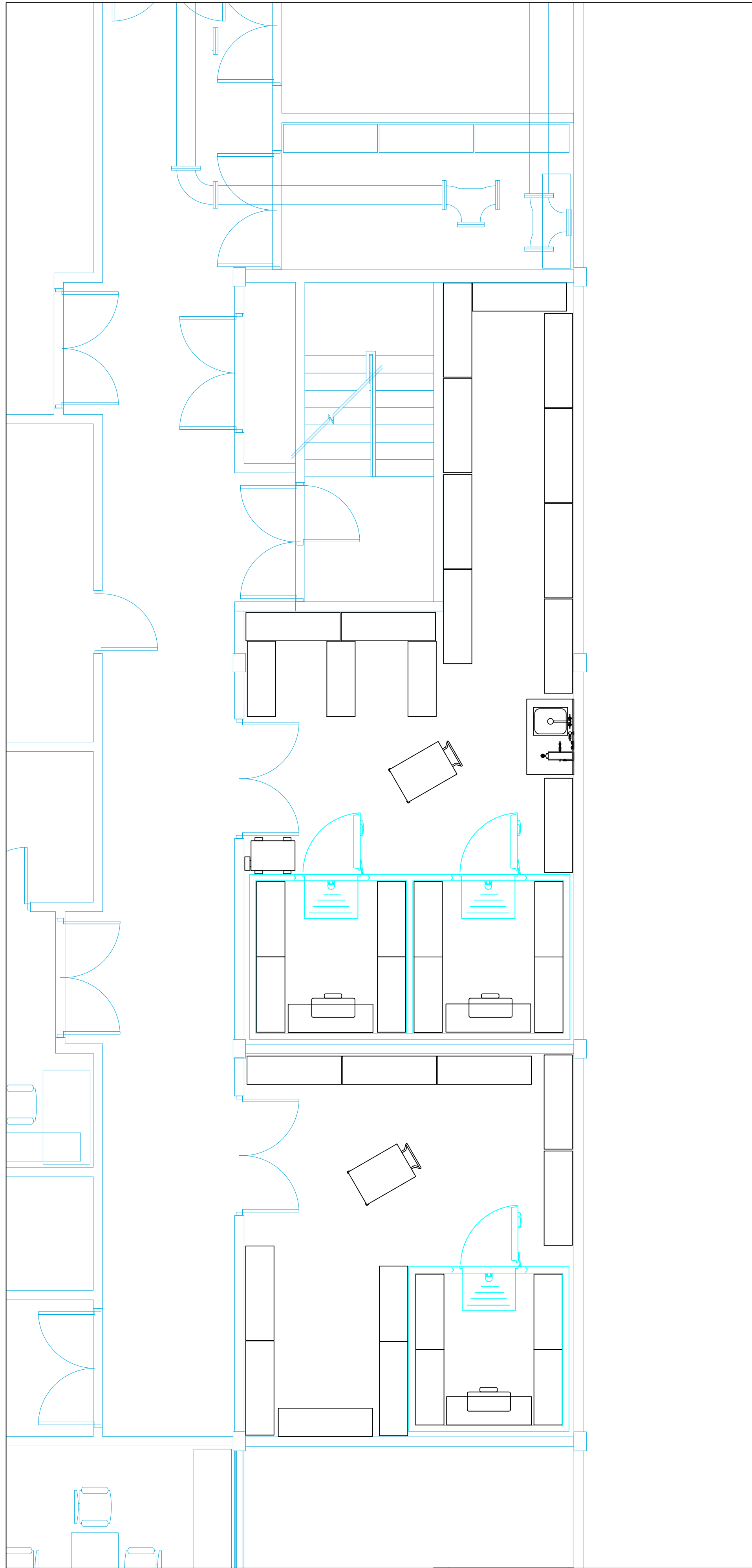
INTERNATIONAL INC.

2055 W 73rd Street, Miami, FL 33016
Ph: (305)826-8696 Fax: (305)826-9131

| | | |
|-----|-----------------------------------|---------|
| 1 | Preliminary Layout | 3-25-21 |
| 2 | Updated background from Architect | 4-20-21 |
| 3 | | |
| 4 | | |
| No. | Revision/Issue | Date |

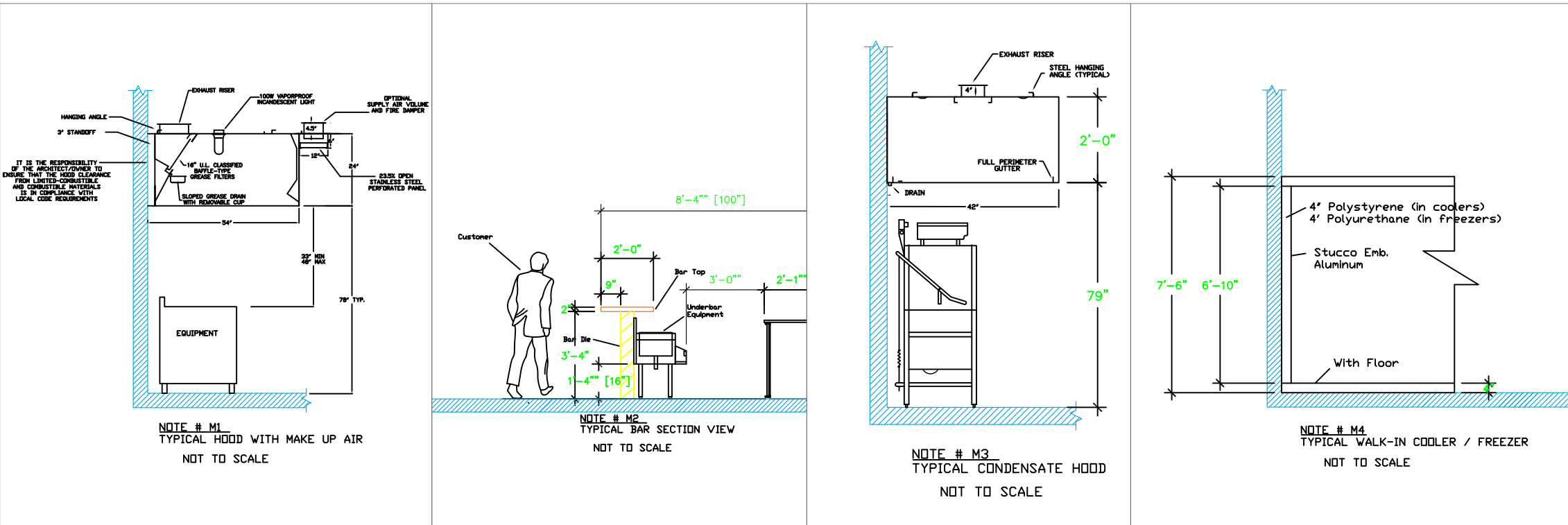
Date
April 20, 2021
Drawn By
Dayne Gauntlett
Scale
1/4" = 1'0"

Sheet
BF-1.0



LEGEND – MECHANICAL

- EXHAUST DUCT COLLAR
- SUPPLY DUCT COLLAR
- INWALL BACKING FOR WALL SHELVES
- RECESSED FLOOR
- RAISED EQUIPMENT PAD



NOTE # M5
SHIP DRAWING WILL BE PROVIDED BY MANUFACTURER FOR HOOD, EXHAUST FANS, & SUPPLY FANS, UNCE ORDER IS PLACE WITH.

NOTE # M6
ARCHITECT OR ENGINEER TO SIZE AND LOCATE, CONTRACTOR TO PROVIDE ALL OPENINGS FOR DUCTS, PLUMBING LINES, ELECTRICAL LINES, AND REFRIGERATION LINES, AS REQUIRED BY EQUIPMENT.

NOTE # M7
SUPPLY FANS TO BE LOCATED A MINIMUM OF 10' FROM EXHAUST FANS.

NOTE # M8
CEILING HEIGHTS TO BE VERIFIED FOR SUFFICIENT CLARENCE FOR EQUIPMENT.

NOTE # M9
GENERAL CONTRACTOR TO PROVIDE 2" PLYWOOD WALL BACKING FROM 48" TO 78" AFF FOR ALL WALL MOUNTED EQUIPMENT.

NOTE # M10
REFRIGERATION CONTRACTOR TO HANG EVAPORATORS FOR WALK-IN, RUN & CHARGE LINES BETWEEN EVAP. & CONDENSING UNIT.

Equipment MECHANICAL Service Requirements

All Dimensions to be verified on the job site. Actual locations for floor drains, and any ventilating equipment to be determined by Engineer. Mechanical, Plumbing & Electrical to be checked and verified by Customers MEP Engineer. Remote Condensing Units to be located by Architect. Exhaust & Supply fans to be located by Architect.

Rok Hotel Kingston
Bulk F&B Area
Kingston, Jamaica

TAPESTRY COLLECTION
BY HILTON™

uni-source SUPPLY
INTERNATIONAL INC.

2055 W 73rd Street, Miami, FL 33016
Ph:(305)826-8696 Fax:(305)826-9131

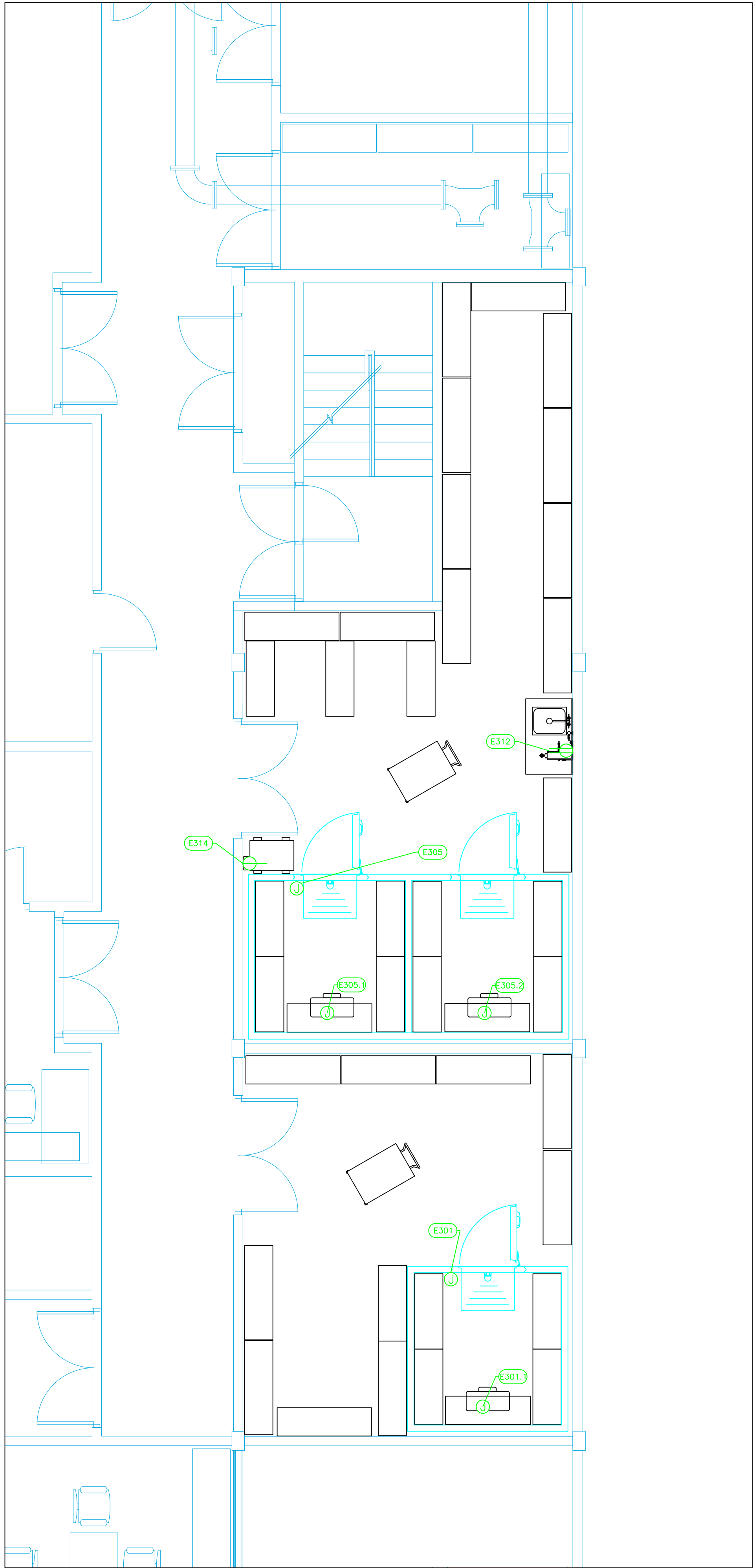
| | | |
|-----|-----------------------------------|---------|
| 1 | Preliminary Layout | 3-25-21 |
| 2 | Updated background from Architect | 4-20-21 |
| 3 | | |
| 4 | | |
| No. | Revision/Issue | Date |

Date
April 20, 2021

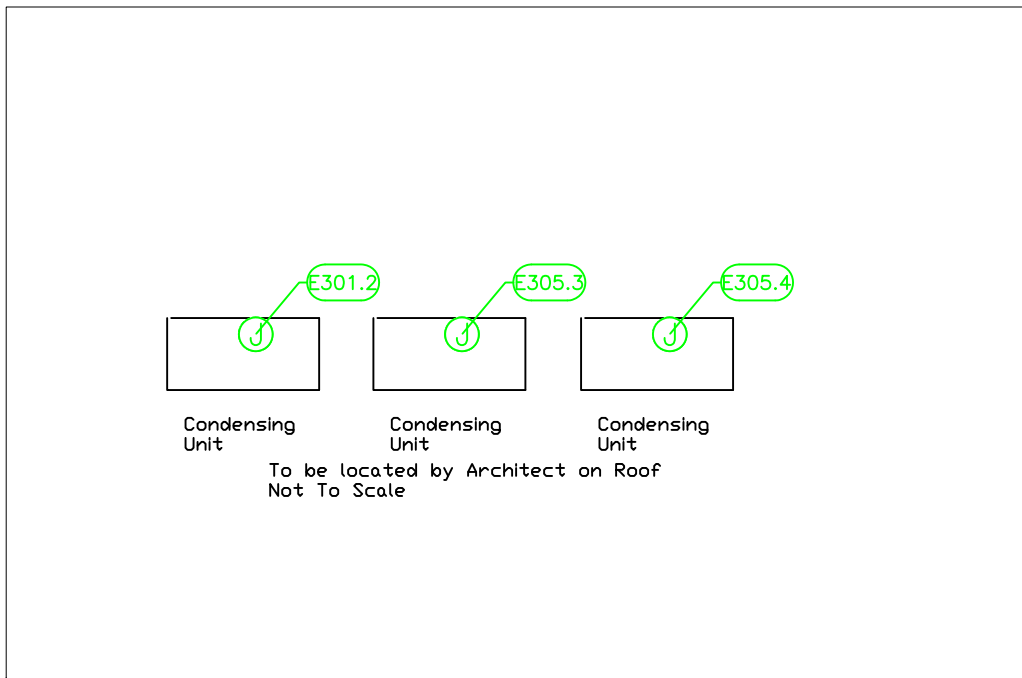
Drawn By
Dayne Gauntlett

Scale
1/4" = 1'0"

Sheet
BF-2.0

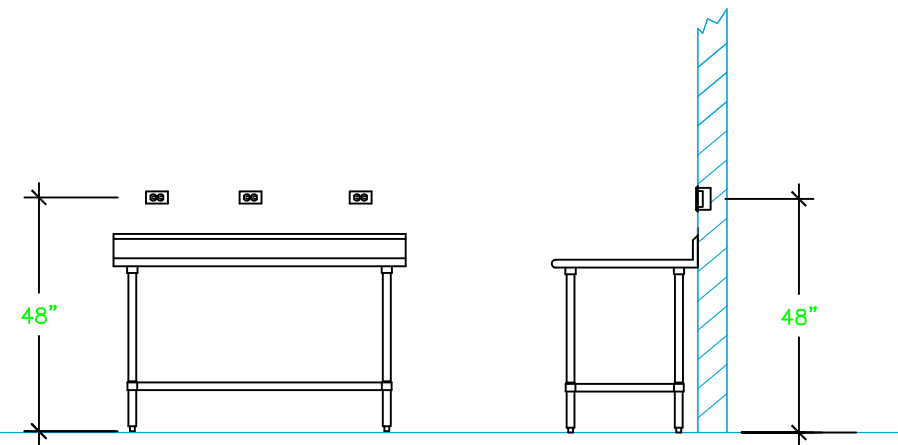


| ELECTRICAL SCHEDULE | | | | | | | | | | | |
|---------------------|-----------------------------------|---------|-------|-------|------|-------|------|----------------|--------------|----------|---------------------------------|
| ItemNo | Category | Voltage | Cycle | Phase | Amps | Hp | NEMA | ConnectionType | Rough-In AFF | Quantity | Electrical Remarks |
| 301 | Walk-in Cooler | 115 | 50 | 1 | 15 | | | J-box | ceiling | 1 | Elec. for lights in walk-in |
| 301.1 | Evaporator for Cooler | 220 | 50 | 1 | 15 | | | J-box | ceiling | 1 | interconnect with Condenser |
| 301.2 | Remote Condenser Unit for Cooler | 220 | 50 | 1 | 15 | 1.0 | | J-box | Roof | 1 | Location by Architect |
| 305 | Walk-in Combo | 115 | 50 | 1 | 15 | | | J-box | ceiling | 1 | Elec. for lights in walk-in |
| 305.1 | Evaporator for Cooler | 220 | 50 | 1 | 15 | | | J-box | ceiling | 1 | interconnect with Condenser |
| 305.2 | Evaporator for Freezer | 220 | 50 | 1 | 15 | | | J-box | ceiling | 1 | interconnect with Condenser |
| 305.3 | Remote Condenser Unit for Cooler | 220 | 50 | 1 | 15 | 1-1/3 | | J-box | Roof | 1 | Location by Architect |
| 305.4 | Remote Condenser Unit for Freezer | 220 | 50 | 1 | 38.5 | 3-1/2 | | J-box | Roof | 1 | Location by Architect |
| 312 | Work Table, Stainless Steel Top | 115 | 50 | 1 | 15 | | | Duplex | 48" | 1 | Convenience Outlet, See Note E1 |
| 314 | Receiving Scale | 115 | 50-60 | 1 | 5 | | | Simplex | 48" | 1 | |



LEGEND - ELECTRICAL CONNECTIONS

- DUPLEX RECEPT., 15-AMP, 120-VOLT, GROUND TYPE, HORIZONTAL MOUNT
- SIMPLEX RECEPT., 120-VOLT, GROUND TYPE, HORIZONTAL MOUNT
- SPECIAL PURPOSE OUTLET, GROUND TYPE, HORIZONTAL MOUNT
- JUNCTION BOX, DIRECT CONNECTION
- DISCONNECT SWITCH, DIRECT CONNECTION
- FLOOR/CEILING RECEPTACLE AS INDICATED
- (2) Telephone + (2) Data
- FIELD CONNECTIONS
- HARD WIRE CONNECTION POINT AT MACHINE



NOTE # E2:
ALL NATIONAL, STATE, AND LOCAL CODES SHALL APPLY.

NOTE # E3:
ALL ELECTRICAL CONNECTIONS AND HARDWARE REQUIRED TO BE PROVIDED BY ELECTRICAL CONTRACTOR.

NOTE # E4:
ALL JUNCTION BOXES, OUTLETS, ETC. TO BE LOCATED SO AS TO NOT INTERFERE WITH EQUIPMENT.

NOTE # E5:
ALL RELAYS, CONTRACTORS, STARTERS, AND SWITCHES REQUIRED FOR EXHAUST & SUPPLY FANS TO BE PROVIDED BY ELECTRICAL CONTRACTOR UNLESS SPECIFIED.

NOTE # E6:
ELECTRICAL CONTRACTOR TO INTERCONNECT DISHMACHINE TO EXHAUST FAN FOR DISHMACHINE SO THAT THE FAN RUNS WHEN THE DISHMACHINE IS IN OPERATION.

NOTE # E7:
ELECTRICAL CONTRACTOR TO INSTALL TABLE LIMIT SWITCH TO END OF CLEAN DISHTABLE TO THAT MACHINE STOPS WHEN SWITCH IS DEPRESSED.

NOTE # E8:
ELECTRICAL CONTRACTOR TO CONNECT DRAIN LINE HEATER, PAN HEATER AND DODR HEATER FOR WALK-IN FREEZER.

Equipment ELECTRICAL Service Requirements

All Dimensions to be verified on the job site. Actual locations for floor drains, and any ventilating equipment to be determined by Engineer. Mechanical, Plumbing & Electrical to be checked and verified by Customers MEP Engineer. Remote Condensing Units to be located by Architect. Exhaust & Supply fans to be located by Architect.

Rok Hotel Kingston
Bulk F&B Area
Kingston, Jamaica

TAPESTRY
COLLECTION
BY HILTON™

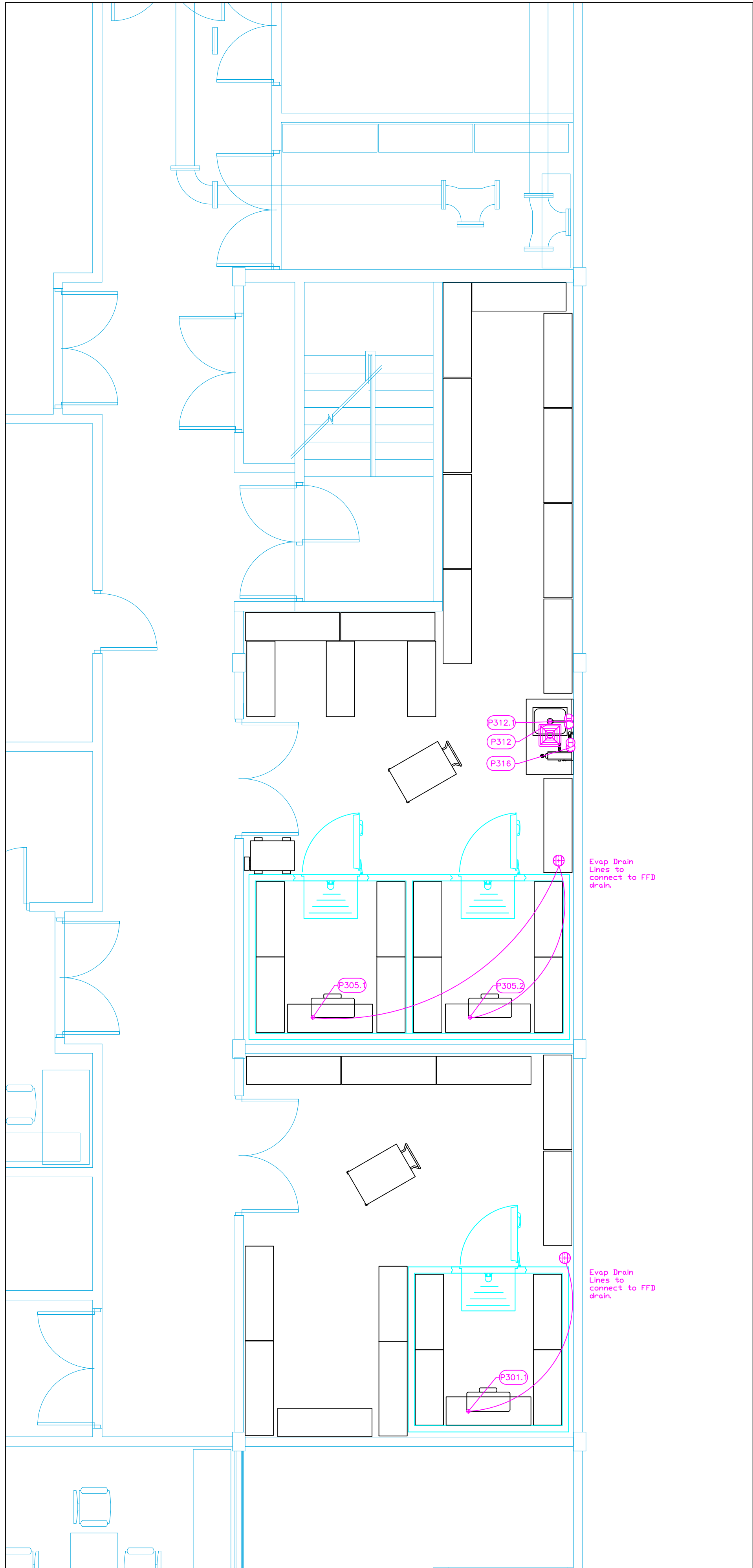
uni-source
SUPPLY
INTERNATIONAL INC.

2055 W 73rd Street, Miami, FL 33016
Ph:(305)826-8696 Fax:(305)826-9131

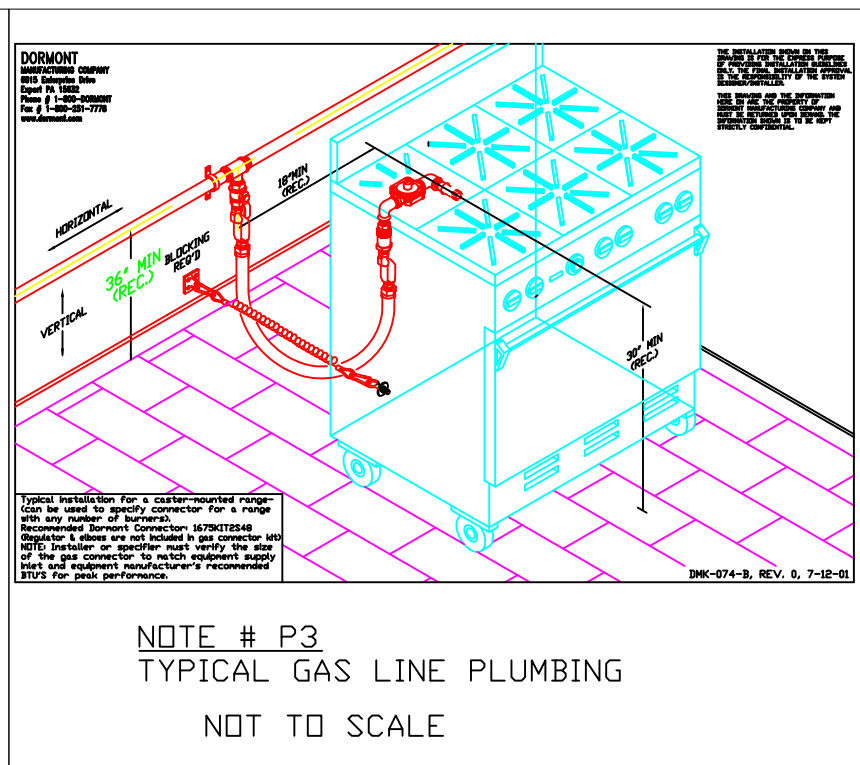
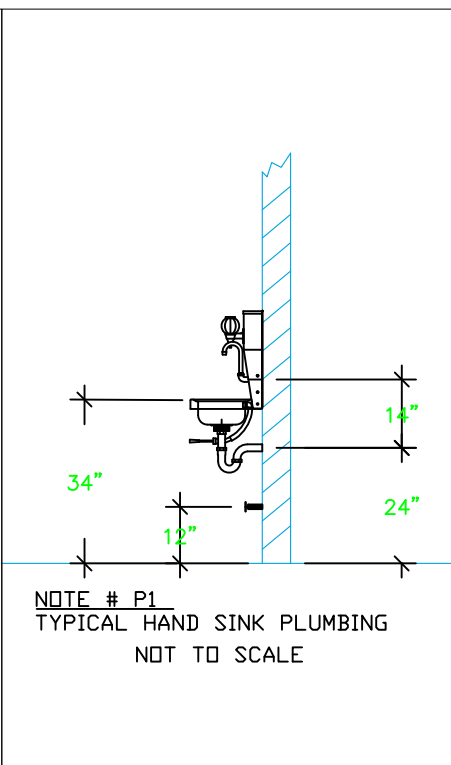
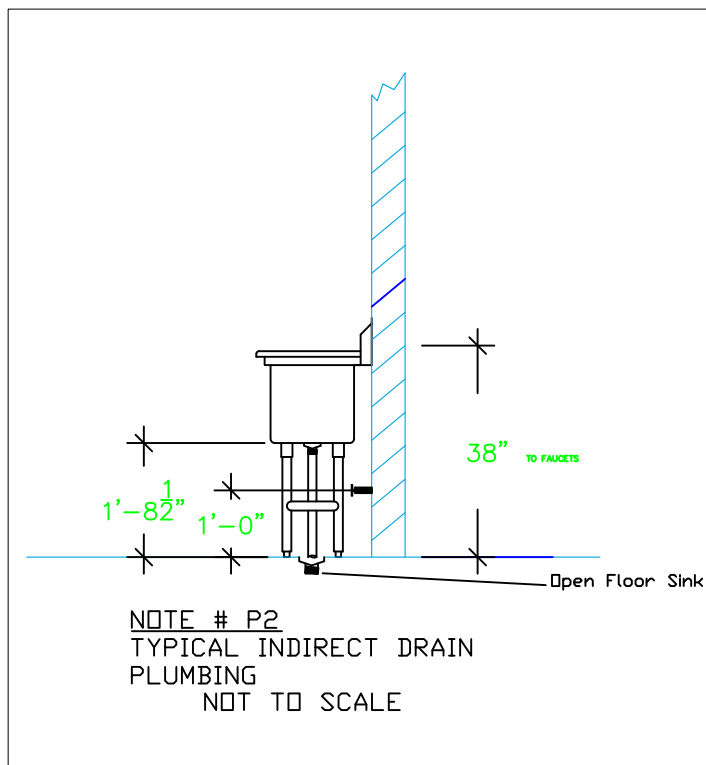
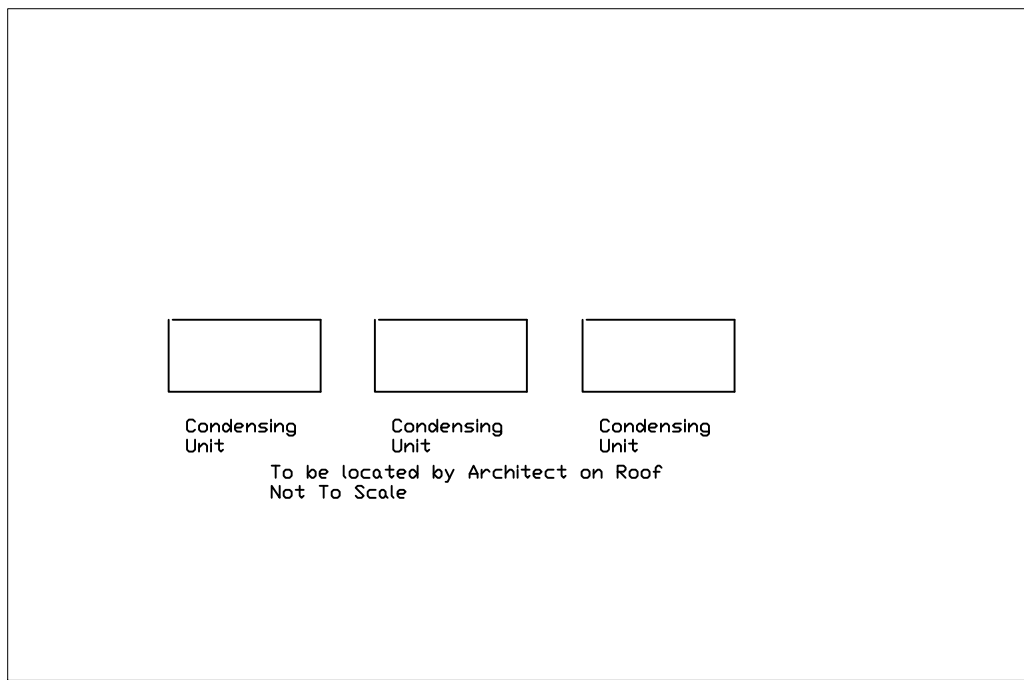
| | | |
|-----|-----------------------------------|---------|
| 1 | Preliminary Layout | 3-25-21 |
| 2 | Updated background from Architect | 4-20-21 |
| 3 | | |
| 4 | | |
| No. | Revision/Issue | Date |

Date
April 20, 2021
Drawn By
Dayne Gauntlett
Scale
1/4" = 1'0"

Sheet
BF-3.0



| PLUMBING SCHEDULE | | | | | | | | | | | | |
|-------------------|-----------------------------------|-----------------------|----------------------|--------------|-------------------------|-------------------------|-----|---------------------------|-----------------|-------------|-----|-------------------------------|
| ITEM NO. | DESCRIPTION | COLD WATER SIZE | HOT WATER SIZE | H&C Rough-In | DIRECT WASTE SIZE | DIRECT WASTE SIZE | AFF | INDIRECT WASTE SIZE | GAS SIZE(IN) | GAS MBTU | QTY | PLUMBING REMARKS |
| 301.1 | Evaporator for Cooler | | | | | | | 1" | | | 1 | interconnect refrig with Cond |
| 301.2 | Remote Condenser Unit for Cooler | | | | | | | | | | 1 | interconnect refrig with Evap |
| 305.1 | Evaporator for Cooler | | | | | | | 1" | | | 1 | interconnect refrig with Cond |
| 305.2 | Evaporator for Freezer | | | | | | | 1" | | | 1 | interconnect refrig with Cond |
| 305.3 | Remote Condenser Unit for Cooler | | | | | | | | | | 1 | interconnect refrig with Evap |
| 305.4 | Remote Condenser Unit for Freezer | | | | | | | | | | 1 | Interconnect refrig with Evap |
| 312 | Work Table, Stainless Steel Top | | | | | | | | | | 1 | |
| | Weld-in Sink | | | | | | | 1-1/2" | | | 1 | |
| 312.1 | Deck Mount Faucet | 1/2" | 1/2" | 12" | | | | | | | 1 | |
| 316 | Hose Reel | 3/8" | 3/8" | 72" | | | | | | | 1 | |



LEGEND – PLUMBING CONNECTIONS

- HW-HOT WATER, OR CW-COLD WATER
- GAS
- WASTE, DIRECT-CONNECTED
- WASTE, INDIRECT to Floor Sink
- WASTE, INDIRECT to Funnel Floor Drain
- FLOOR DRAIN
- WASTE, INDIRECT to Floor Sink
- FILTERED WATER, at machine.

NOTE # P4- ALL NATIONAL, STATE, AND LOCAL CODES SHALL APPLY

NOTE # P5- ALL PLUMBING CONNECTIONS TO BE EXTENDED AND INTERCONNECTED TO EQUIPMENT AND ALL HARDWARE REQUIRED TO BE PROVIDED BY PLUMBING CONTRACTOR

NOTE # P6- PLUMBING CONTRACTOR TO VERIFY THAT ALL EQUIPMENT IS INSTALLED WITH THE APPROPRIATE GAS PRESSURE AND REGULATORS

NOTE # P7- ALL WASTE LINES AND CONDENSATE LINES TO BE EXTEND FROM EQUIPMENT TO FLOOR DRAINS BY PLUMBING CONTRACTOR.

Equipment PLUMBING Service Requirements

All Dimensions to be verified on the job site. Actual locations for floor drains, and any ventilating equipment to be determined by Engineer. Mechanical, Plumbing & Electrical to be checked and verified by Customers MEP Engineer. Remote Condensing Units to be located by Architect. Exhaust & Supply fans to be located by Architect.

Rok Hotel Kingston
Bulk F&B Area
Kingston, Jamaica

TAPESTRY
COLLECTION
BY HILTON™

uni-source
SUPPLY
INTERNATIONAL INC.

2055 W 73rd Street, Miami, FL 33016
Ph:(305)826-8696 Fax:(305)826-9131

| | | |
|-----|-----------------------------------|---------|
| 1 | Preliminary Layout | 3-25-21 |
| 2 | Updated background from Architect | 4-20-21 |
| 3 | | |
| 4 | | |
| No. | Revision/Issue | Date |

Date
April 20, 2021
Drawn By
Dayne Gauntlett
Scale
1/4" = 1'0"

Sheet
BF-4.0