

EQUIPMENT SCHEDULE					
ItemNo	Category	Mfr	Model	Quantity	Equipment Remarks
1	Hand Sink	Advance Tabco	7-PS-80	1	
4	Beverage Counter	Advance Tabco	BEV-30-84L	1	
6	Work Table, Cabinet Base Sliding Doors	Advance Tabco	CK-SS-304M	1	
7	Reach-In Refrigerator	Continental Refrigerator	1RN	1	
8	Serving Counter, Cold Food	Advance Tabco	CPU-2-DR	1	
9	Hot Food Serving Counter / Table	Advance Tabco	SW-4E-240-DR	1	
10	Mobile Heated Cabinet	Carter-Hoffmann	PH1800	1	By Owner/Operator
12	Work Table, Stainless Steel Top	Advance Tabco	TKMS-305	1	
	Weld-in Sink	Advance Tabco	TA-11J	1	
12.1	Pre-Rinse Faucet Assembly	Krowne	17-204WL	1	
12.2	Dishtable Sorting Shelf	Advance Tabco	DT-6R-12	1	
13	Dish Cart / Dolly	Cambro	ADCS110	1	By Owner/Operator
14	Rack Dolly	Cambro	CDR2020H151	1	By Owner/Operator

EQUIPMENT LAYOUT

All Dimensions to be verified on the job site.
Actual locations for floor drains, and any ventilating equipment to be determined by Engineer.
Mechanical, Plumbing & Electrical to be checked and verified by Customers MEP Engineer.
Remote Condensing Units to be located by Architect.
Exhaust & Supply fans to be located by Architect.

ROK Hotel Kingston
Cafeteria
Kingston, Jamaica

TAPESTRY
COLLECTION
BY HILTON™

uni-source
SUPPLY

INTERNATIONAL INC.

2055 W 73rd Street, Miami, FL 33016

Ph: (305)826-8696 Fax: (305)826-9131

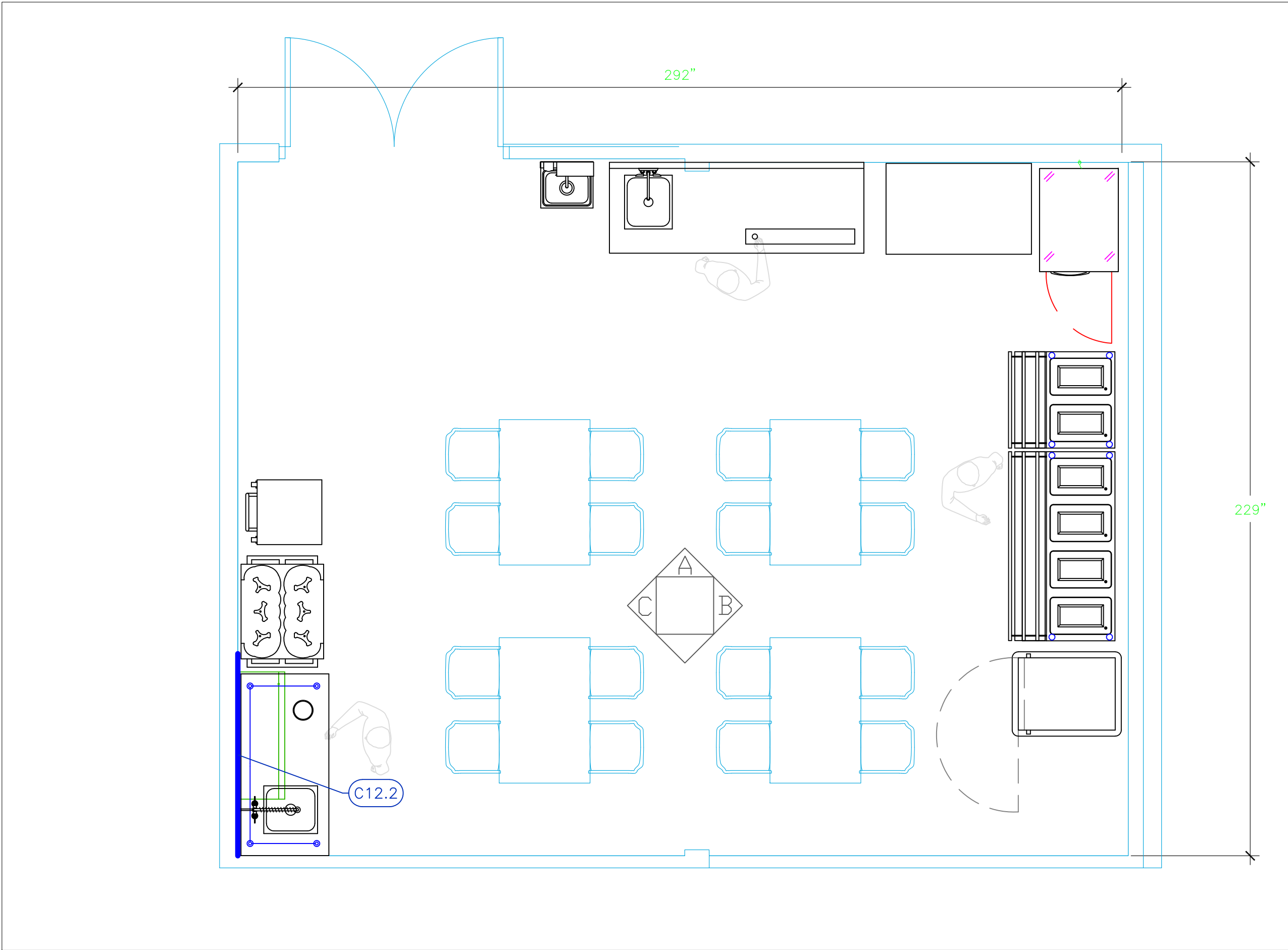
1	Preliminary Layout	12-16-21
2	Update after Zoom meeting	12-17-21
3	Correction on Table 12	12-20-21
4	Final, removed #11,15	1-19-22
No.	Revision/Issue	Date

Date
Jan 19, 2022

Drawn By
Dayne Gauntlett

Scale
3/8" = 1'0"

Sheet
CA-1



Mechanical Schedule								
ITEM NO.	QTY	DISCRIPTION	EXHAUST (L X W)	EXHAUST (CFM)	SUPPLY (L X W)	SUPPLY (CFM)	Ventilation Remarks	Unit
12.2	1	Dishable Sorting Shelf					See Note M9	ea

LEGEND — MECHANICAL

- EXHAUST DUCT COLLAR
- SUPPLY DUCT COLLAR
- INWALL BACKING FOR WALL SHELVES
- RECESSED FLOOR
- RAISED EQUIPMENT PAD

Equipment MECHANICAL Service Requirements

All Dimensions to be verified on the job site. Actual locations for floor drains, and any ventilating equipment to be determined by Engineer. Mechanical, Plumbing & Electrical to be checked and verified by Customers MEP Engineer. Remote Condensing Units to be located by Architect. Exhaust & Supply fans to be located by Architect.

ROK Hotel Kingston
Cafeteria
Kingston, Jamaica

TAPESTRY
COLLECTION
BY HILTON™

uni-source
SUPPLY
INTERNATIONAL INC.

2055 W 73rd Street, Miami, FL 33016
Ph:(305)826-8696 Fax:(305)826-9131

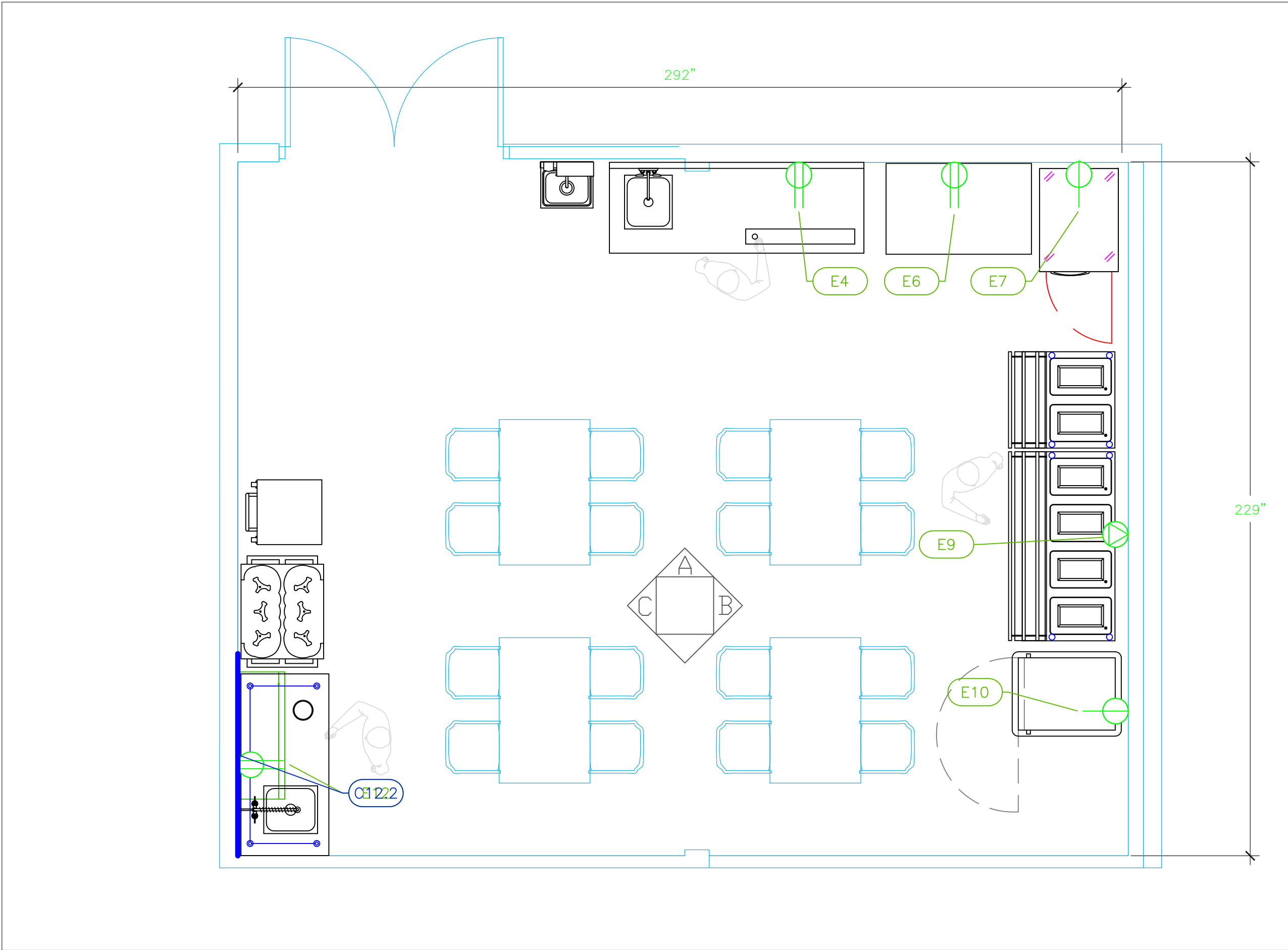
1	Preliminary Layout	12-16-21
2	Update after Zoom meeting	12-17-21
3	Correction on Table 12	12-20-21
4	Final, removed #11,15	1-19-22
No.	Revision/Issue	Date

Date
Jan 19, 2022

Drawn By
Dayne Gauntlett

Scale
3/8" = 1'0"

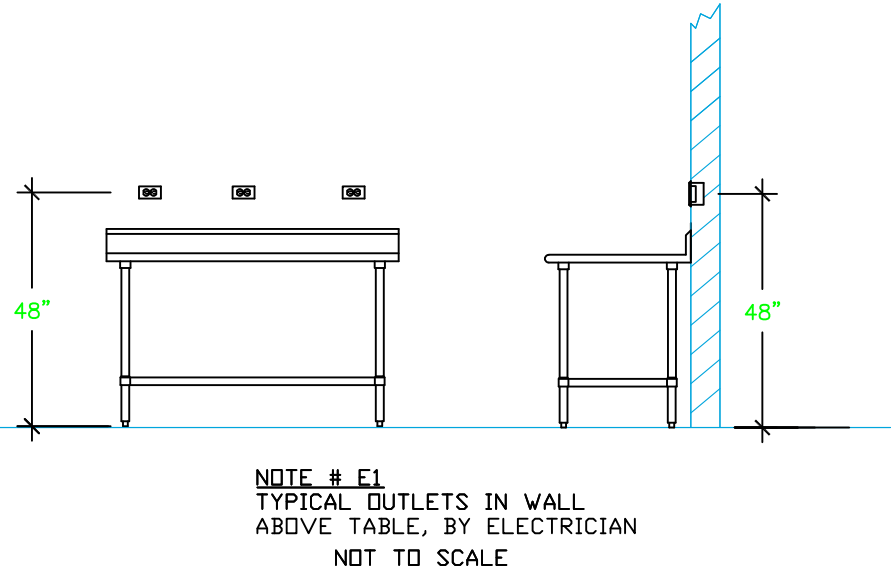
Sheet
CA-2



ELECTRICAL SCHEDULE												
ItemNo	Category	Voltage	Cycle	Phase	Amps	Hp	NEMA	ConnectionType	Rough-In AFF	Quantity	Electrical Remarks	Unit
4	Beverage Counter	120	60	1	15				48"	1	See Note E1	ea
6	Work Table, Cabinet Base Sliding Doors	120	60	1	15				48"	1	See Note E1	ea
7	Reach-In Refrigerator	120	60	1	5.2	1/4			18"	1		ea
9	Hot Food Serving Counter / Table	208-240	60	1	15.88-18.32		L6-30P	Special	18"	1		ea
10	Mobile Heated Cabinet	120	60	1	13.7		5-15P		18"	1		ea
12	Work Table, Stainless Steel Top	120	60	1	15				48"	1	See Note E1	ea

LEGEND - ELECTRICAL CONNECTIONS

- DUPLEX RECEPT., 15-AMP, 120-VOLT, GROUND TYPE, HORIZONTAL MOUNT
- SIMPLEX RECEPT., 120-VOLT, GROUND TYPE, HORIZONTAL MOUNT
- SPECIAL PURPOSE OUTLET, GROUND TYPE, HORIZONTAL MOUNT
- JUNCTION BOX, DIRECT CONNECTION
- DISCONNECT SWITCH, DIRECT CONNECTION
- FLOOR/CEILING RECEPTACLE AS INDICATED
- (2) Telephone + (2) Data
- FIELD CONNECTIONS
- HARD WIRE CONNECTION POINT AT MACHINE



NOTE # E2-
ALL NATIONAL, STATE, AND LOCAL
CODES SHALL APPLY

NOTE # E3-
ALL ELECTRICAL CONNECTIONS
AND HARDWARE REQUIRED TO BE
PROVIDED BY ELECTRICAL
CONTRACTOR

NOTE # E4-
ALL JUNCTION BOXES, OUTLETS,
ETC. TO BE LOCATED SO AS TO
NOT INTERFERE WITH EQUIPMENT

NOTE # E5-
ALL RELAYS, CONTRACTORS,
STARTERS, AND SWITCHES
REQUIRED FOR EXHAUST & SUPPLY
FANS TO BE PROVIDED BY
ELECTRICAL CONTRACTOR
UNLESS SPECIFIED

NOTE # E6-
ELECTRICAL CONTRACTOR TO
INTERCONNECT DISHMACHINE TO
EXHAUST FAN FOR DISHMACHINE
SO THAT THE FAN RUNS WHEN
THE DISHMACHINE IS IN
OPERATION.

NOTE # E7-
ELECTRICAL CONTRACTOR TO
INSTALL TABLE LIMIT SWITCH TO
END OF CLEAN DISHTABLE TO
THAT MACHINE STOPS WHEN
SWITCH IS DEPRESSED.

NOTE # E8-
ELECTRICAL CONTRACTOR TO
CONNECT DRAIN LINE HEATER,
PAN HEATER AND DOOR HEATER
FOR WALK-IN FREEZER.

Equipment
ELECTRICAL
Service Requirements

All Dimensions to be verified on the job site.
Actual locations for floor drains, and any ventilating
equipment to be determined by Engineer.
Mechanical, Plumbing & Electrical to be checked and verified
by Customers MEP Engineer.
Remote Condensing Units to be located by Architect.
Exhaust & Supply fans to be located by Architect.

ROK Hotel Kingston
Cafeteria
Kingston, Jamaica

TAPESTRY
COLLECTION
BY HILTON™

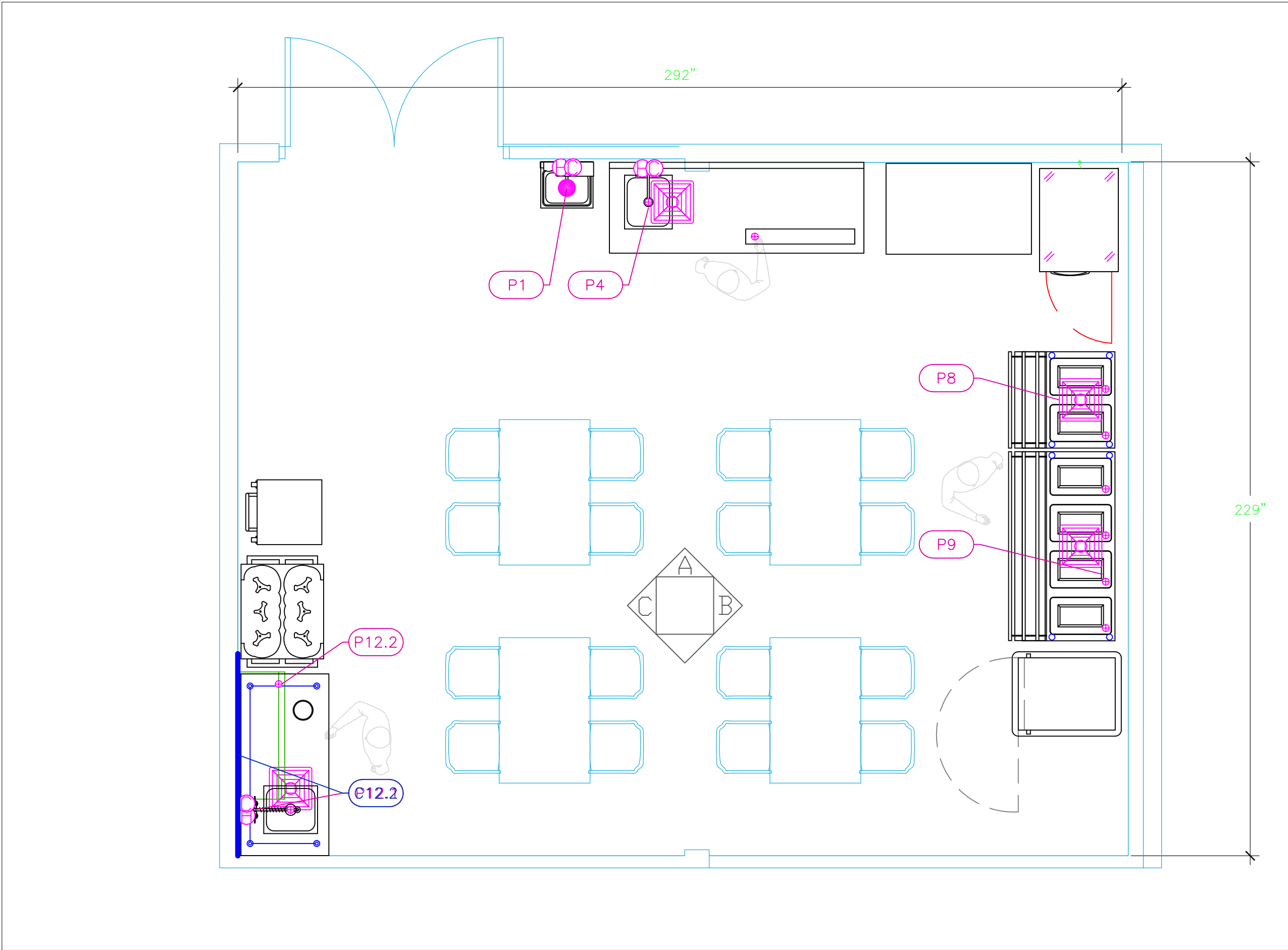


2055 W 73rd Street, Miami, FL 33016
Ph:(305)826-8696 Fax:(305)826-9131

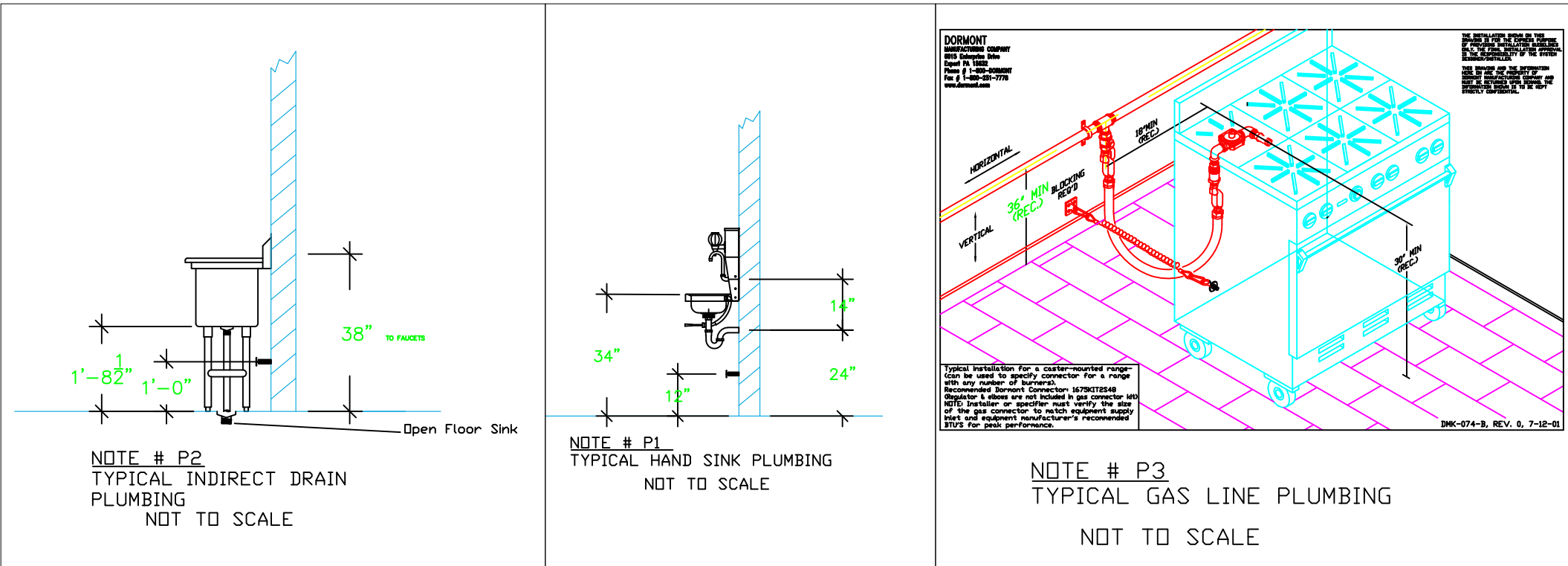
1	Preliminary Layout	12-16-21
2	Update after Zoom meeting	12-17-21
3	Correction on Table 12	12-20-21
4	Final, removed #11,15	1-19-22
No.	Revision/Issue	Date

Date
Jan 19, 2022
Drawn By
Dayne Gauntlett
Scale
3/8" = 1'0"

Sheet
CA-3



PLUMBING SCHEDULE										
ITEM NO.	DESCRIPTION	COLD WATER SIZE	HOT WATER SIZE	H&C Rough-In	DIRECT WASTE SIZE	DIRECT WASTE AFF	INDIRECT WASTE SIZE	GAS SIZE(IN)	GAS MBTU	QTY
1	Hand Sink	1/2"	1/2"	12"	1-1/2"	24"				1
4	Beverage Counter	1/2"	1/2"	12"			1-1/2"			1
8	Serving Counter, Cold Food						1"			1
9	Hot Food Serving Counter / Table						(4) 1"			1
12	Work Table, Stainless Steel Top	1/2"	1/2"	12"						1
	Weld-in Sink						1-1/2"			1



LEGEND – PLUMBING CONNECTIONS

- HW-HOT WATER, OR CW-COLD WATER
- GAS
- WASTE, DIRECT-CONNECTED
- WASTE, INDIRECT to Floor Sink, or Floor Drain
- FUNNEL FLOOR DRAIN Josam 30000-E3
- FLOOR DRAIN Josam 30000-A3
- FLOOR SINK Zurn FD-2370-y-PV4-F
- FILTERED WATER, at machine.

NOTE # P4:
ALL NATIONAL, STATE, AND LOCAL CODES SHALL APPLY

NOTE # P5:
ALL PLUMBING CONNECTIONS TO BE EXTENDED AND INTERCONNECTED TO EQUIPMENT AND ALL HARDWARE REQUIRED TO BE PROVIDED BY PLUMBING CONTRACTOR

NOTE # P6:
PLUMBING CONTRACTOR TO VERIFY THAT ALL EQUIPMENT IS INSTALLED WITH THE APPROPRIATE GAS PRESSURE AND REGULATORS

NOTE # P7:
ALL WASTE LINES AND CONDENSATE LINES TO BE EXTEND FROM EQUIPMENT TO FLOOR DRAINS BY PLUMBING CONTRACTOR.

Equipment PLUMBING Service Requirements

All Dimensions to be verified on the job site. Actual locations for floor drains, and any ventilating equipment to be determined by Engineer. Mechanical, Plumbing & Electrical to be checked and verified by Customers MEP Engineer. Remote Condensing Units to be located by Architect. Exhaust & Supply fans to be located by Architect.

ROK Hotel Kingston
Cafeteria
Kingston, Jamaica

TAPESTRY
COLLECTION
BY HILTON™

uni-source
SUPPLY
INTERNATIONAL INC.

2055 W 73rd Street, Miami, FL 33016
Ph:(305)826-8696 Fax:(305)826-9131

1	Preliminary Layout	12-16-21
2	Update after Zoom meeting	12-17-21
3	Correction on Table 12	12-20-21
4	Final, removed #11,15	1-19-22
No.	Revision/Issue	Date

Date
Jan 19, 2022
Drawn By
Dayne Gauntlett
Scale
3/8" = 1'0"

Sheet
CA-4