

BOH - Foodservice Overview

EQUIPMENT OVERVIEW

All Dimensions to be verified on the job site. Actual locations for floor drains, and any ventilating equipment to be determined by Engineer. Mechanical, Plumbing & Electrical to be checked and verified by Customers MEP Engineer. Remote Condensing Units to be located by Architect. Exhaust & Supply fans to be located by Architect.

Anantara
BOH - Foodservice
North Caicos, T&C

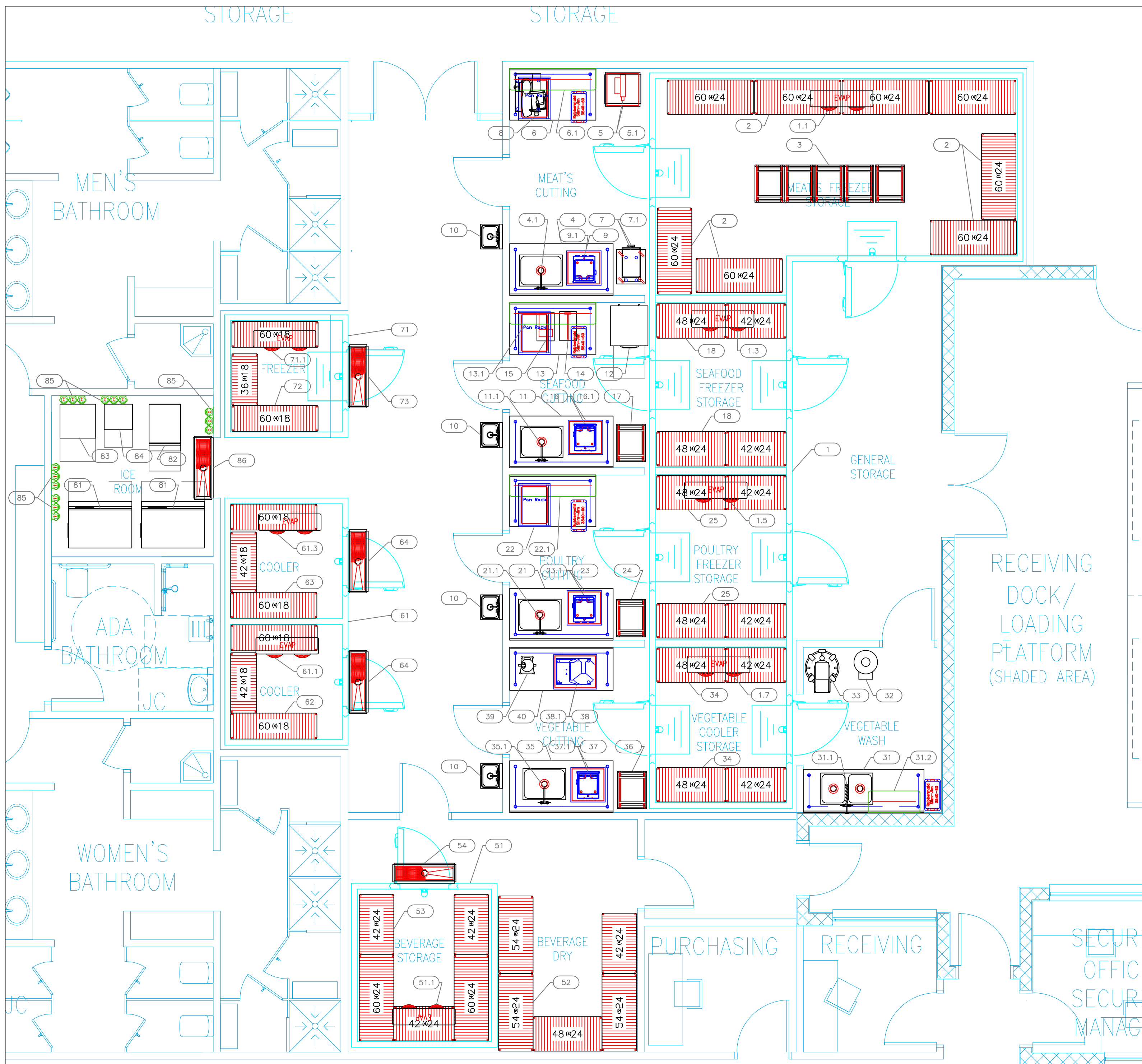


INTERNATIONAL INC.
 2055 W 73rd Street, Miami, FL 33016
 Ph: (305)826-8696 Fax: (305)826-9131

1	Preliminary Layout	3-14-26
2	Added Colleague Restaurant	3-18-26
3		
4		
No.	Revision/Issue	Date

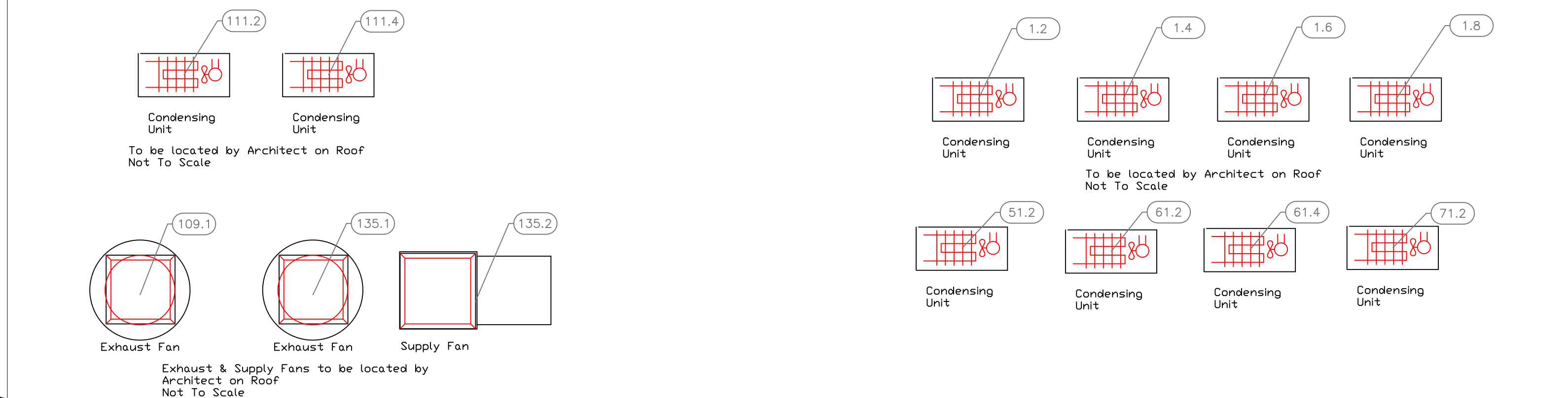
Date
April 21, 2026
 Drawn By
Dayne Gauntlett
 Scale
1/16" = 1'0"

Sheet
BF-1.0



EQUIPMENT SCHEDULE					
ItemNo	Category	Mfr	Model	Quantity	Equipment Remarks
1	Walk-in Combo	Arctic Industries	Q227136V.001- 4COMP COMBO - 1	1	
1.1	Evaporator for Freezer	Arctic Industries	RL6E07DDARE-448/449 - 1.1	1	
1.2	Remote Condenser Unit for Freezer	Arctic Industries	RFO300L4SDANT-448/449 - 1.2	1	
1.3	Evaporator for Freezer	Arctic Industries	RL6E090DDARE-448/449 - 1.3	1	
1.4	Remote Condenser Unit for Freezer	Arctic Industries	RFO300L4SDANT-448/449 - 1.4	1	
1.5	Evaporator for Freezer	Arctic Industries	RL6E090DDARE-448/449 - 1.5	1	
1.6	Remote Condenser Unit for Freezer	Arctic Industries	RFO300L4SDANT-448/449 - 1.6	1	
1.7	Evaporator for Cooler	Arctic Industries	RL6A094ADARE-448/449 - 1.7	1	
1.8	Remote Condenser Unit for Cooler	Arctic Industries	RFO100M4SDANT-448/449 - 1.8	1	
2	Shelving Unit, All Plastic	Quantum	QP246074VS-4	8	
3	Bun / Sheet Pan Rack	Advance Tabco	PR20-3W	5	
4	Work Table, Stainless Steel Top	Advance Tabco	TKMS-366	1	
4.1	Deck Mount Faucet	Advance Tabco	TA-11G	1	
5	Meat Bone Saw, Electric	Krowne	15-410L	1	
5.1	Equipment Stand, for Mixer / Slicer	Omcen USA	10270	1	
6	Work Table, Stainless Steel Top	Advance Tabco	MT-SS-242	1	
6.1	Work Table, Stainless Steel Top	Advance Tabco	TKMS-365	1	
6.1	Overshelf	Advance Tabco	PS-15-60	1	
7	Meat Grinder	Univex	MG89	1	
7.1	Equipment Stand, for Mixer / Slicer	Lakeside	716	1	
8	Food Slicer, Electric	Univex	8713M	1	
9	Food Packaging Machine	Sammic	SE-310	1	
9.1	Equipment Stand, for Mixer / Slicer	Advance Tabco	MT-SS-242	1	
10	Hand Sink	Advance Tabco	7-PS-40	4	
11	Work Table, Stainless Steel Top	Advance Tabco	TKMS-366	1	
11.1	Deck Mount Faucet	Advance Tabco	TA-11G	1	
11.1	Deck Mount Faucet	Krowne	15-410L	1	
12	Refrigerator, Fish / Poultry	Continental Refrigerator	D1RSNSS-F	1	
13	Work Table, Stainless Steel Top	Advance Tabco	TKMS-365	1	
13.1	Overshelf	Advance Tabco	PS-15-60	1	
14	Lobster Cracker	Vollrath	5103	1	
15	Shrimp Cutter & Deveiner	Nemco	55925	1	
16	Food Packaging Machine	Sammic	SE-310	1	
16.1	Equipment Stand, for Mixer / Slicer	Advance Tabco	MT-SS-242	1	
17	Bun / Sheet Pan Rack	Advance Tabco	PR20-3W	1	
18	Shelving Unit, All Plastic	Quantum	QP244874VS-4	2	
21	Work Table, Stainless Steel Top	Advance Tabco	TKMS-366	1	
21.1	Deck Mount Faucet	Advance Tabco	TA-11G	1	
21.1	Deck Mount Faucet	Krowne	15-410L	1	
22	Work Table, Stainless Steel Top	Advance Tabco	TKMS-365	1	
22.1	Overshelf	Advance Tabco	PS-15-60	1	
23	Food Packaging Machine	Sammic	SE-310	1	
23.1	Equipment Stand, for Mixer / Slicer	Advance Tabco	MT-SS-242	1	
24	Bun / Sheet Pan Rack	Advance Tabco	PR20-3W	1	
25	Shelving Unit, All Plastic	Quantum	QP244874VS-4	2	
31	Work Table, Stainless Steel Top	Advance Tabco	TKMS-307	1	
31.1	Pre-Rinse Faucet Assembly	Advance Tabco	TA-11A-2	1	
31.1	Pre-Rinse Faucet Assembly	Krowne	17-204WL	1	
31.2	Overshelf	Advance Tabco	PS-15-36	1	
32	Potato Peeler	Hobart	6115-1	1	
33	Salad / Vegetable Dryer, Electric	Sammic	ES-100	1	
34	Shelving Unit, All Plastic	Quantum	QP244874VS-4	2	
35	Work Table, Stainless Steel Top	Advance Tabco	TKMS-366	1	
35.1	Deck Mount Faucet	Advance Tabco	TA-11G	1	
35.1	Deck Mount Faucet	Krowne	15-410L	1	
36	Bun / Sheet Pan Rack	Advance Tabco	PR20-3W	1	
37	Food Packaging Machine	Sammic	SE-310	1	
37.1	Equipment Stand, for Mixer / Slicer	Advance Tabco	MT-SS-242	1	
38	Electric Food Cutter	Univex	BC14	1	
38.1	Equipment Stand, for Mixer / Slicer	Advance Tabco	MT-SS-302	1	
39	Food Processor, Benchtop / Countertop	Waring	FP2200	1	
40	Work Table, Stainless Steel Top	Advance Tabco	TKMS-306	1	
51	Walk-in Cooler	Arctic Industries	Q227122 V.001 - COOLER - 51	1	
51.1	Evaporator for Cooler	Arctic Industries	RL6A094ADARE-448/449 - 51.1	1	
51.2	Remote Condenser Unit for Cooler	Arctic Industries	RFO100M4SDANT-448/449 - 51.2	1	
52	Shelving Unit, All Plastic	Quantum	QP245474VS-4	3	
53	Shelving Unit, All Plastic	Quantum	QP246074VS-4	2	
54	Floor Trough	Advance Tabco	FFTG-1242	1	
61	Walk-in Combo	Arctic Industries	Q227133V.001- COOLER COMBO - 61	1	
61.1	Evaporator for Cooler	Arctic Industries	RL6A073ADARE-448/449 - 61.1	1	
61.2	Remote Condenser Unit for Cooler	Arctic Industries	RFO080M4SDANT-448/449 - 61.2	1	
61.3	Evaporator for Freezer	Arctic Industries	RL6A073ADARE-448/449 - 61.3	1	
61.4	Remote Condenser Unit for Freezer	Arctic Industries	RFO080M4SDANT-448/449 - 61.4	1	
62	Shelving Unit, All Plastic	Quantum	QP186074VS-4	2	
63	Shelving Unit, All Plastic	Quantum	QP186074VS-4	2	
64	Floor Trough	Advance Tabco	FFTG-1242	2	
71	Walk-in Freezer	Arctic Industries	Q227083V.001 - FREEZER - 71	1	
71.1	Evaporator for Freezer	Arctic Industries	RL6E07DDARE-448/449 - 71.1	1	
71.2	Remote Condenser Unit for Freezer	Arctic Industries	RFO250L4SDANT-448/449 - 71.2	1	
72	Shelving Unit, All Plastic	Quantum	QP186074VS-4	2	
73	Floor Trough	Advance Tabco	FFTG-1242	1	
81	Ice Maker, Cube-Style	Hoshizaki	IM-500SAB	2	
82	Ice Bin for Ice Machines	Hoshizaki	B-700SF	2	
82	Ice Flaker	Hoshizaki	F-801MAJ	1	
82	Ice Bin for Ice Machines	Hoshizaki	B-300SF	1	
83	Ice Maker with Bin, Cube-Style	Hoshizaki	IM-50BAA-Q	1	
84	Ice Maker with Bin, Cube-Style	Hoshizaki	IM-50BAA-LM	1	
85	Water Filtration System, Parts & Accessories	Krowne	KR-HS3-KIT	5	
86	Floor Trough	Advance Tabco	FFTG-1242	1	

BOH - Commissary



EQUIPMENT LAYOUT

All Dimensions to be verified on the job site. Actual locations for floor drains, and any ventilating equipment to be determined by Engineer. Mechanical, Plumbing & Electrical to be checked and verified by Customers MEP Engineer. Remote Condensing Units to be located by Architect. Exhaust & Supply fans to be located by Architect.

Anantara
BOH - Foodservice
North Caicos, T&C

ANANTARA
HOTELS & RESORTS

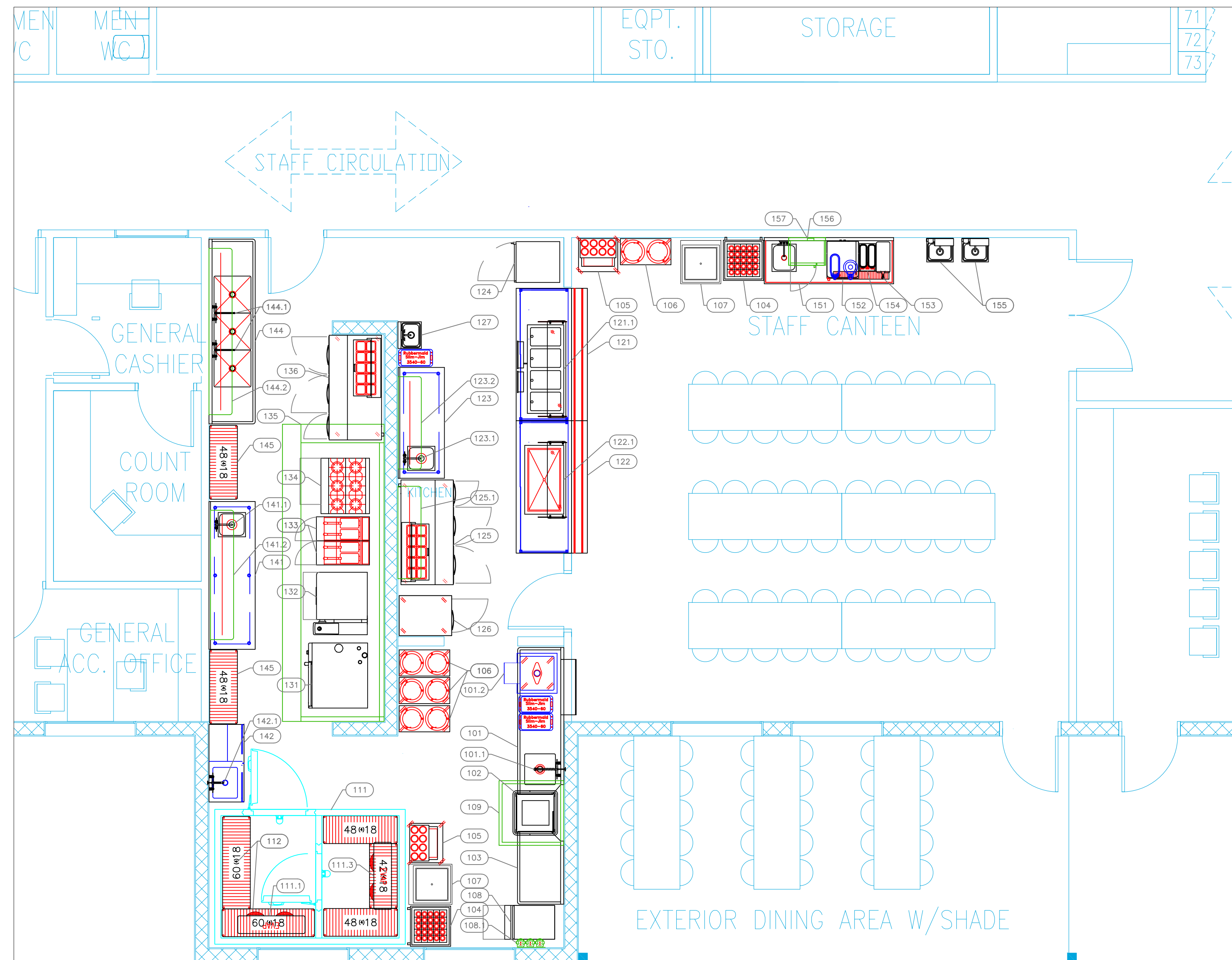
uni-source
SUPPLY

INTERNATIONAL INC.
 2055 W 73rd Street, Miami, FL 33016
 Ph: (305)826-8696 Fax: (305)826-9131

1	Preliminary Layout	3-14-26
2	Added Colleague Restaurant	3-18-26
3		
4		
No.	Revision/Issue	Date

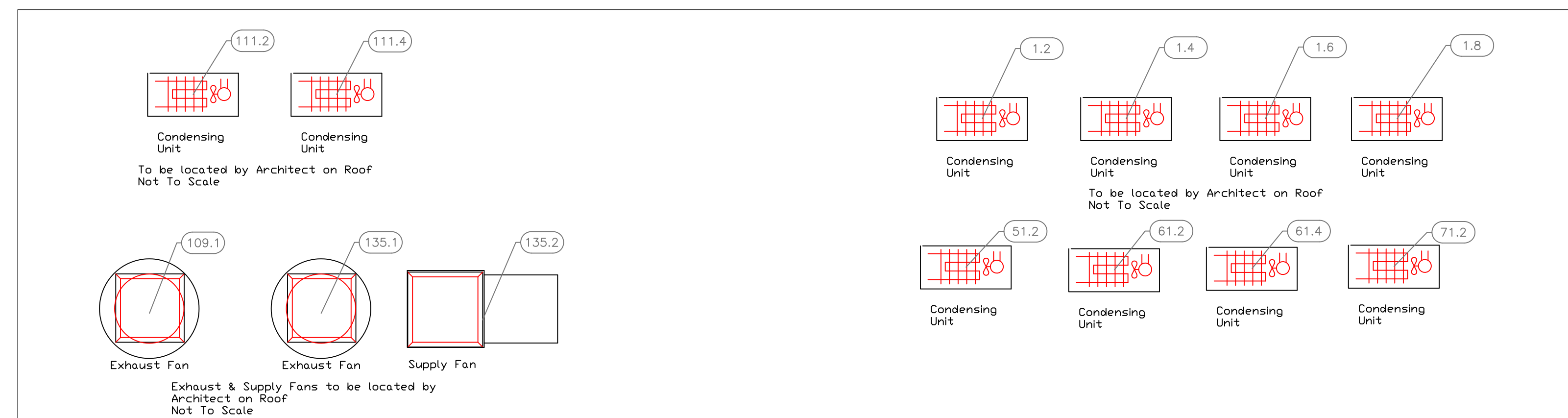
Date
April 21, 2026
 Drawn By
Dayne Gauntlett
 Scale
1/4" = 1'0"

Sheet
BF-1.1



ItemNo	Category	Mfr	Model	Quantity	Equipment Remarks
101	Soiled Dishtable	Advance Tabco	DTS-S30-96L	1	
101.1	Pre-Rinse Faucet Assembly	Krowne	17-108WL	1	
101.2	Soak Sink	Advance Tabco	9-FSC-20	1	
102	Dishwasher, Door Type	Jackson WWS	TEMPSTAR	1	
103	Clean Dishtable	Advance Tabco	DTC-S30-48R	1	
104	Rack Dispensers	Piper Products	AC-ST-2020-14OZ	2	
105	Flatware & Tray Cart	Piper Products	AT-ST-OSW8	2	
106	Mobile Plate and Dish Dispenser	Piper Products	2AT1-ST	4	
107	Rack Dispensers	Piper Products	AC-ST-2020	2	
108	Ice Maker, Cube-Style	Hoshizaki	KM-520MAJ	1	
	Ice Bin for Ice Machines	Hoshizaki	B-300SF	1	
108.1	Water Filtration System, Parts & Accessories	Krowne	KR-HS3-KIT	1	
109	Exhaust Hood	Captive-Aire	Q8601590- DISH HOOD #109	1	
109.1	Exhaust Fan	Captive-Aire	AH-DU30HFA-E-FAN #109.1	1	
111	Walk-in Combo	Arctic Industries	Q227081V.001 - WALK-IN COMBO - 111	1	
111.1	Evaporator for Cooler	Arctic Industries	RL6A073ADARE-448/449 - 111.1	1	
111.2	Remote Condenser Unit for Cooler	Arctic Industries	RFO080M4SDANT-448/449 - 111.2	1	
111.3	Evaporator for Freezer	Arctic Industries	RL6E066DDARE-448/449 - 111.3	1	
111.4	Remote Condenser Unit for Freezer	Arctic Industries	RFO230L4SDANT-448/449 - 111.4	1	
112	Shelving Unit, All Plastic	Quantum	QP186074VS-4	2	
121	Counter with Tray Slide	Custom Fab	Q2065 - 121	1	
121.1	Hot Food Well Unit, Drop-In, Electric	Wells (Middleby)	MOD-400TDM/AF	1	
122	Counter with Tray Slide	Custom Fab	Q2065 - 122	1	
122.1	Cold Food Well Unit, Drop-In, Refrigerated	Wells (Middleby)	RCP-300	1	
123	Work Table, Stainless Steel Top	Advance Tabco	KMS-306	1	
	Weld-in Sink	Advance Tabco	TA-11J	1	
123.1	Deck Mount Faucet	Krowne	15-410L	1	
123.2	Overshelf	Advance Tabco	PS-15-60	1	
124	Heated Holding Proofing Cabinet, Mobile	Carter-Hoffmann (Middleby)	HL4-18	1	
125	Sandwich / Salad Preparation Refrigerator	Continental Refrigerator	RA68N10	1	
125.1	Overshelf	Advance Tabco	PS-15-60	1	
126	Reach-In Refrigerator	Continental Refrigerator	1RN	1	
127	Hand Sink	Advance Tabco	7-PS-40	1	
131	Combi Oven, Gas	RATIONAL	ICP 6-FULL ON 6-FULL LP 208/240V 1 PH	1	
		RATIONAL	8720.1560US	2	
132	Tilting Skillet Braising Pan, Electric	RATIONAL	IVARIOPRO L P 3PH 208/240V (LMX200CE)	1	
		RATIONAL	1900.1159US	1	
133	Gas Floor Fryer	Pitco (Middleby)	SG14-S	2	
134	Range, 36", 6 Open Burners	Southbend (Middleby)	4361D	1	
135	Main Hood	Captive-Aire	MAIN HOOD #135	1	
135.1	Exhaust Fan	Captive-Aire	AH-DU180HFA- E-FAN #135.1	1	
135.2	Supply Fan	Captive-Aire	AH-A2-20D - S-FAN #135.2	1	
136	Sandwich / Salad Preparation Refrigerator	Continental Refrigerator	RA68N10	1	
141	Work Table, Stainless Steel Top	Advance Tabco	KMS-308	1	
	Weld-in Sink	Advance Tabco	TA-11J	1	
141.1	Deck Mount Faucet	Krowne	15-410L	1	
141.2	Overshelf	Advance Tabco	PS-15-84	1	
142	Mop Sink Cabinet	Advance Tabco	9-OPC-84DL	1	
142.1	Service Faucet	Krowne	16-127	1	
144	Three (3) Compartment Sink	Advance Tabco	FC-3-2424-24RL	1	
144.1	Wall / Splash Mount Faucet	Krowne	14-812L	2	
144.2	Overshelf	Advance Tabco	PS-15-108	1	
145	Shelving Unit, All Plastic	Quantum	QP184874VS-4	2	
151	Beverage Counter	Advance Tabco	BEV-30-84L	1	
152	Coffee Tea Brewer	BUNN	52400.0100	1	
153	Beverage Dispenser, Non-Insulated	CFS Brands	1085003	1	
154	Beverage Dispenser, Electric (Cold)	Crathco-UNIC	CS-2E-16-290	1	
155	Hand Sink	Advance Tabco	7-PS-60	2	
156	Microwave Oven	ACP	RCS10TS	1	
157	Microwave Oven, Shelf	Advance Tabco	MS-18-24	1	

BOH - Colleague Restaurant



EQUIPMENT LAYOUT

All Dimensions to be verified on the job site. Actual locations for floor drains, and any ventilating equipment to be determined by Engineer. Mechanical, Plumbing & Electrical to be checked and verified by Customers MEP Engineer. Remote Condensing Units to be located by Architect. Exhaust & Supply fans to be located by Architect.

Anantara
BOH - Foodservice
North Caicos, T&C

ANANTARA
HOTELS & RESORTS

uni-source
SUPPLY

INTERNATIONAL INC.
 2055 W 73rd Street, Miami, FL 33016
 Ph: (305)826-8696 Fax: (305)826-9131

1	Preliminary Layout	3-14-26
2	Added Colleague Restaurant	3-18-26
3		
4		
No.	Revision/Issue	Date

Date
April 21, 2026
 Drawn By
Dayne Gauntlett
 Scale
1/4" = 1'0"

Sheet
BF-1.2