

Bar - Restaurant Area
Bar - Lobby Lounge
Over view

Anantara - North Caicos
 Bars
 Turks & Caicos
 ANANTARA



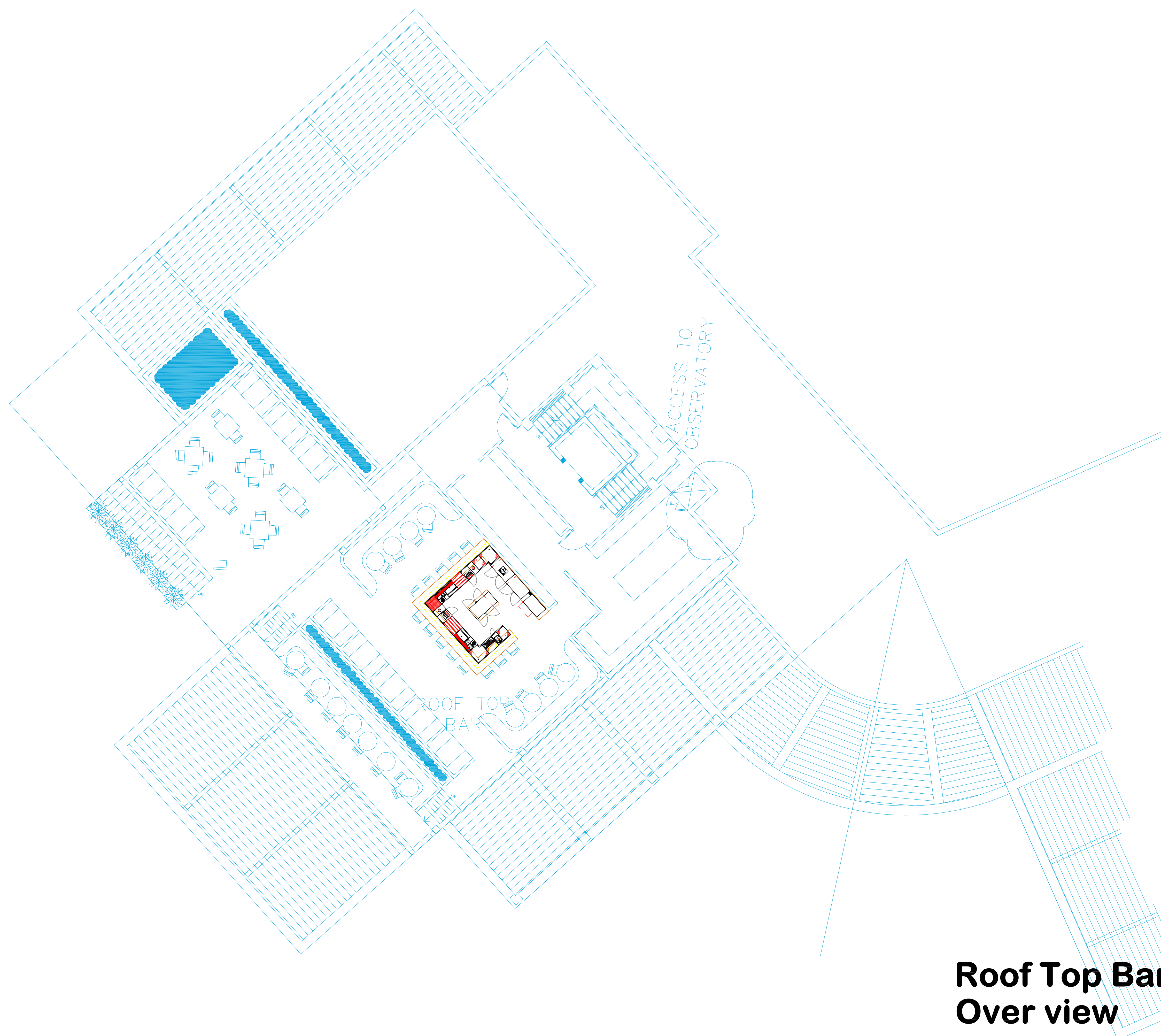
INTERNATIONAL INC.

2055 W 73rd Street, Miami, FL 33016
 Ph: (305)826-8696 Fax: (305)826-9131

1	Preliminary Layout	1-23-26
2		
3		
4		
No.	Revision/Issue	Date

Date
Jan 23, 2026
 Drawn By
Paola Mendez
 Scale
3/32" = 1'0"

Sheet
FS-0.0



**Roof Top Bar
Over view**

Anantara - North Caicos
Bars
Turks & Caicos

ANANTARA

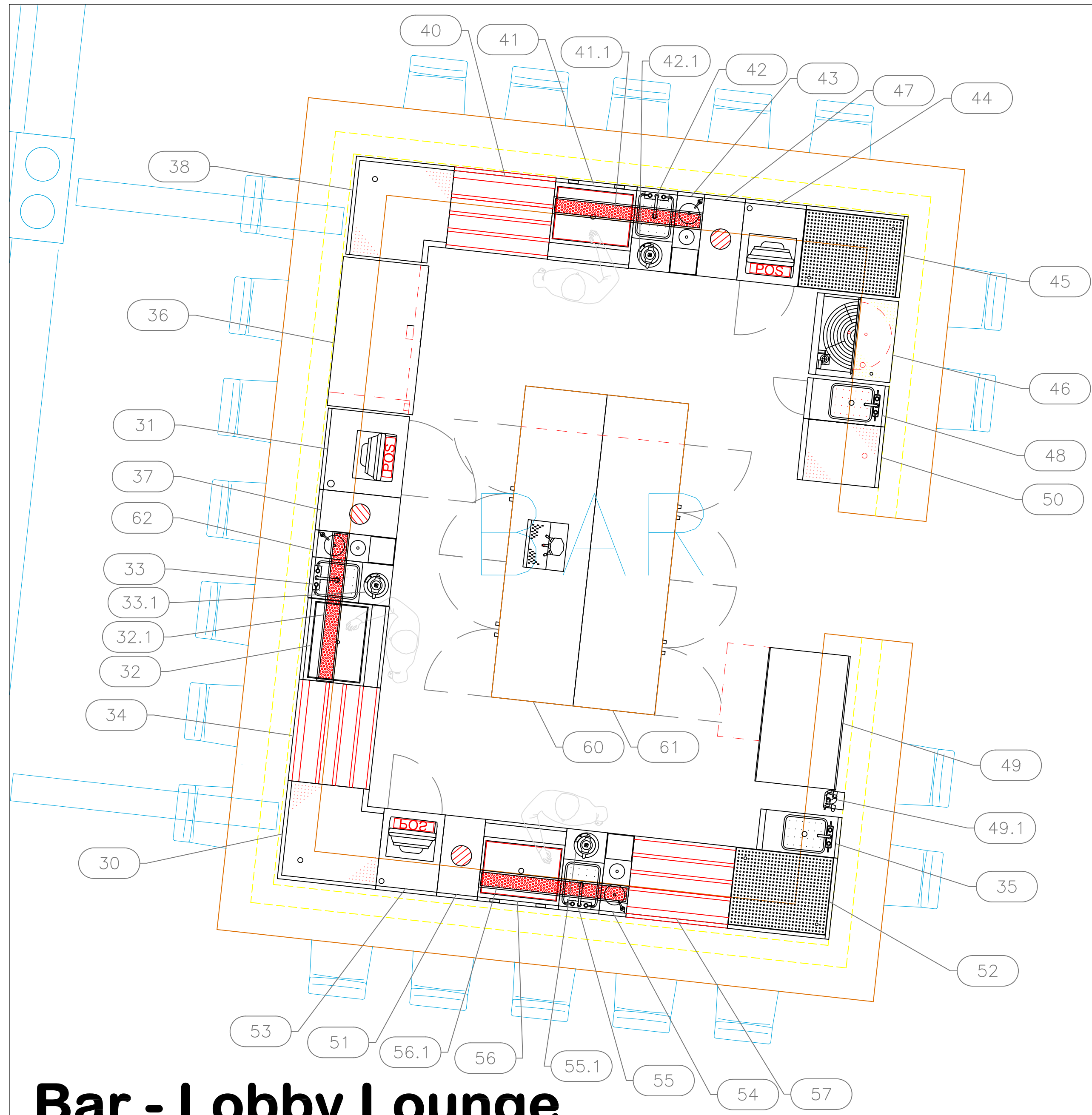


INTERNATIONAL INC.
 2055 W 73rd Street, Miami, FL 33016
 Ph: (305)826-8696 Fax: (305)826-9131

1	Preliminary Layout	1-23-26
2		
3		
4		
No.	Revision/Issue	Date

Date
Jan 23, 2026
 Drawn By
Paola Mendez
 Scale
1/8" = 1'0"

Sheet
FS-0.1



Bar - Lobby Lounge



EQUIPMENT SCHEDULE							
ItemNo	Category	Mfr	Model	Quantity	Equipment Remarks	Unit	Special
80	Back Bar Cabinet, Refrigerated, Pass-Thru	Glastender	CP1FB52	1		ea	
81	Glasswasher, Undercounter / Underbar	Glastender	GW24	1		ea	
83	Glass Rack	Glastender	DBGR-18	1		ea	
84	Corner Angle Filler	Glastender	CILB	1		ea	
85	Blender Station	Glastender	BSA-12	1		ea	
85.1	Blender, Bar	Waring	BB145	1		ea	
86	Underbar Mixology Sink Unit	Glastender	MFT-8	1		ea	
87	Ice Bin	Glastender	IBA-24-CP10	1		ea	
87.1	Drink Rail	Custom Fab		1		ea	
88	Bottle Storage Unit	Glastender	LDA-30S	1		ea	
89	Work Center	Glastender	PCB-18	1		ea	
90	Underbar Add-On Unit	Glastender	DWB-12	1		ea	
91	Corner Angle Filler	Glastender	C-CIR-24/24	1		ea	
92	Blender Station	Glastender	BSA-12	1		ea	
92.1	Blender, Bar	Waring	BB145	1		ea	
93	Underbar Mixology Sink Unit	Glastender	MFT-8	1		ea	
94	Ice Bin	Glastender	IBA-24-CP10	1		ea	
94.1	Drink Rail	Custom Fab		1		ea	
95	Bottle Storage Unit	Glastender	LDA-24S	1		ea	
96	Work Center	Glastender	PCB-18	1		ea	
97	Underbar Add-On Unit	Glastender	DWB-12	1		ea	
98	Glass Rack	Glastender	DBGR-18	1		ea	
99	Corner Angle Filler	Glastender	CILB-LN	1		ea	
100	Back Bar Cabinet, Refrigerated	Glastender	C1SB44	1		ea	
101.1	Water Filtration System, Parts & Accessories	Krowne	KR-HS1-KIT	1		ea	
102	Waste Cabinet	Glastender	SWB-12-C	1		ea	
104	Ice Maker with Bin, Cube-Style	Hoshizaki	IM-200BAC	1		ea	
105	Back Bar Cabinet, Refrigerated	Glastender	C1SB44	1		ea	

EQUIPMENT LAYOUT

All Dimensions to be verified on the job site.
 Actual locations for floor drains, and any ventilating equipment to be determined by Engineer.
 Mechanical, Plumbing & Electrical to be checked and verified by Customers MEP Engineer.
 Remote Condensing Units to be located by Architect.
 Exhaust & Supply fans to be located by Architect.

Anantara - North Caicos
 Bars
 Turks & Caicos
 ANANTARA



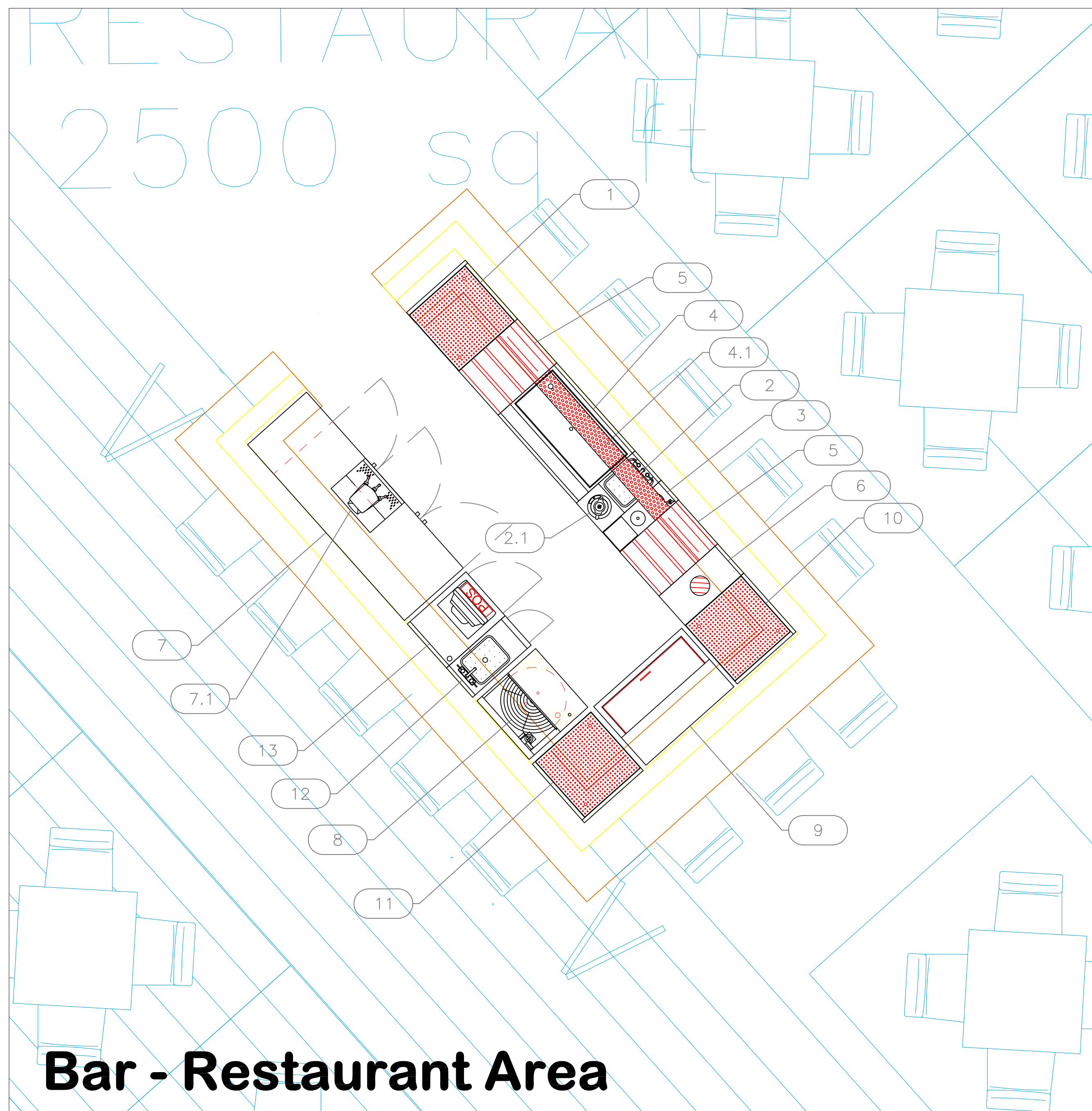
INTERNATIONAL INC.

2055 W 73rd Street, Miami, FL 33016
 Ph: (305)826-8696 Fax: (305)826-9131

1	Preliminary Layout	1-23-26
2		
3		
4		
No.	Revision/Issue	Date

Date
Jan 23, 2026
 Drawn By
Paola Mendez
 Scale
1/2" = 1'0"

Sheet
FS-1.0



Bar - Restaurant Area

EQUIPMENT SCHEDULE							
ItemNo	Category	Mfr	Model	Quantity	Equipment Remarks	Unit	Special
1	Corner Angle Filler	Glastender	CIR-24/24	1		ea	
2	Blender Station	Glastender	BSA-12	1		ea	
2.1	Blender, Bar	Waring	BB145	1		ea	
3	Underbar Mixology Sink Unit	Glastender	MFT-8	1		ea	
		Glastender	MFT-8	1		ea	
4	Ice Bin	Glastender	IBA-36-CP10	1		ea	
4.1	Drink Rail	Custom Fab		1	By Owner/Operator	ea	By Owner
5	Bottle Storage Unit	Glastender	LDA-18S	2		ea	
6	Underbar Add-On Unit	Glastender	DWB-12	1		ea	
7	Undercounter Refrigerator	Glastender	C1FL72-UC	1		ea	
7.1	Draft Beer / Wine Dispensing Tower	Glastender	CBT-3-MF	1		ea	
8	Glasswasher, Undercounter / Underbar	Glastender	GW24	1		ea	
9	Bottle Cooler	Glastender	ST36-S	1		ea	
10	Corner Angle Filler	Glastender	CIR-24/24	1		ea	
11	Corner Angle Filler	Glastender	CIR-24/24	1		ea	
12	Waste Cabinet	Glastender	SWB-12-C	1		ea	
13	Work Center	Glastender	PCB-18	1		ea	

EQUIPMENT LAYOUT

All Dimensions to be verified on the job site.
 Actual locations for floor drains, and any ventilating equipment to be determined by Engineer.
 Mechanical, Plumbing & Electrical to be checked and verified by Customers MEP Engineer.
 Remote Condensing Units to be located by Architect.
 Exhaust & Supply fans to be located by Architect.

Anantara - North Caicos
 Bars
 Turks & Caicos
 ANANTARA

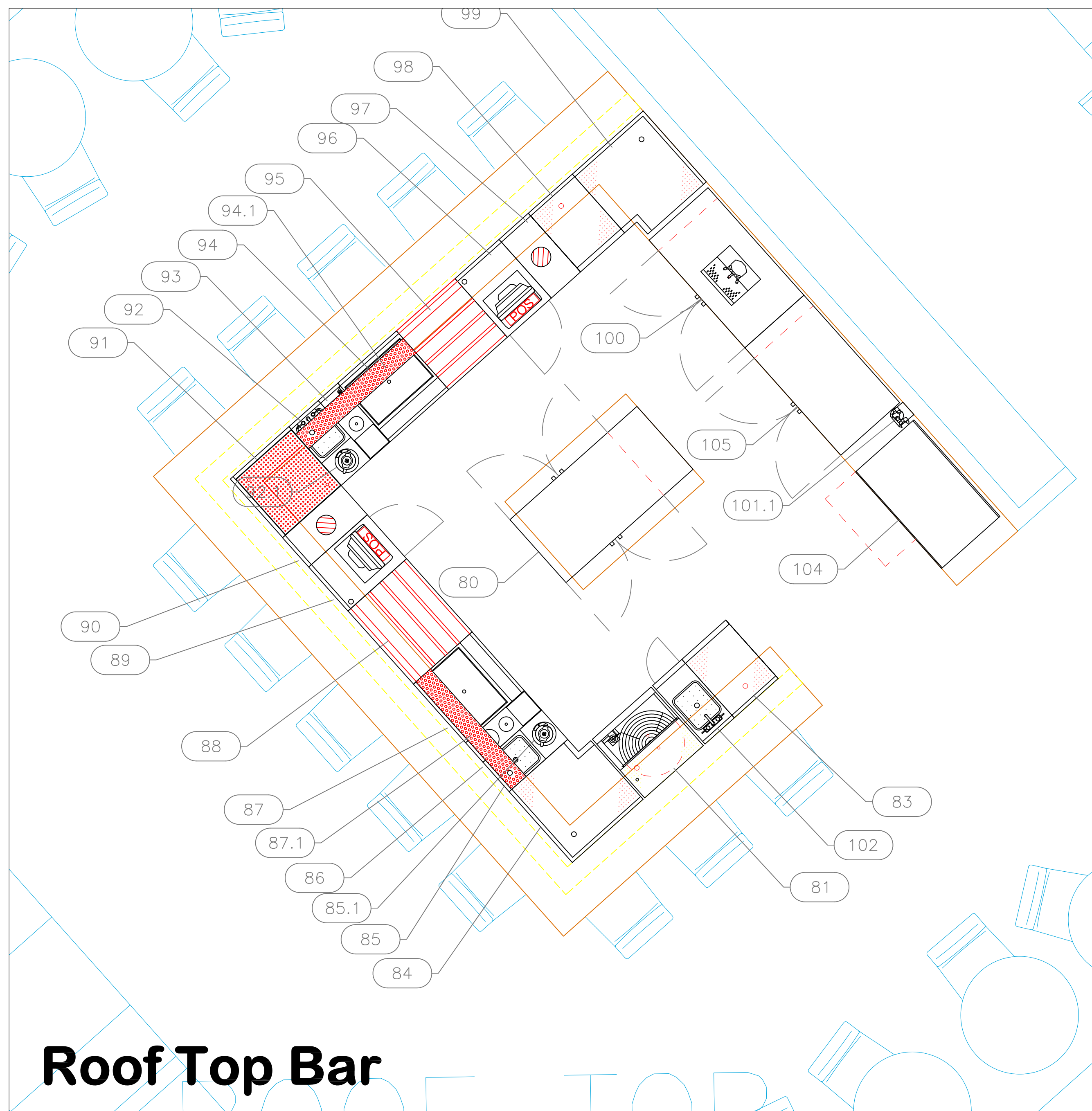


INTERNATIONAL INC.
 2055 W 73rd Street, Miami, FL 33016
 Ph: (305)826-8696 Fax: (305)826-9131

1	Preliminary Layout	1-23-26
2		
3		
4		
No.	Revision/Issue	Date

Date
Jan 23, 2026
 Drawn By
Paola Mendez
 Scale
1/2" = 1'0"

Sheet
FS-1.1



Roof Top Bar

EQUIPMENT SCHEDULE

ItemNo	Category	Mfr	Model	Quantity	Equipment Remarks	Unit	Special
80	Back Bar Cabinet, Refrigerated, Pass-Thru	Glastender	CP1FB52	1		ea	
81	Glasswasher, Undercounter / Underbar	Glastender	GW24	1		ea	
83	Glass Rack	Glastender	DBGGR-18	1		ea	
84	Corner Angle Filler	Glastender	CILB	1		ea	
85	Blender Station	Glastender	BSA-12	1		ea	
85.1	Blender, Bar	Waring	BB145	1		ea	
86	Underbar Mixology Sink Unit	Glastender	MFT-8	1		ea	
87	Ice Bin	Glastender	IBA-24-CP10	1		ea	
87.1	Drink Rail	Custom Fab		1		ea	
88	Bottle Storage Unit	Glastender	LDA-30S	1		ea	
89	Work Center	Glastender	PCB-18	1		ea	
90	Underbar Add-On Unit	Glastender	DWB-12	1		ea	
91	Corner Angle Filler	Glastender	C-CIR-24/24	1		ea	
92	Blender Station	Glastender	BSA-12	1		ea	
92.1	Blender, Bar	Waring	BB145	1		ea	
93	Underbar Mixology Sink Unit	Glastender	MFT-8	1		ea	
94	Ice Bin	Glastender	IBA-24-CP10	1		ea	
94.1	Drink Rail	Custom Fab		1		ea	
95	Bottle Storage Unit	Glastender	LDA-24S	1		ea	
96	Work Center	Glastender	PCB-18	1		ea	
97	Underbar Add-On Unit	Glastender	DWB-12	1		ea	
98	Glass Rack	Glastender	DBGGR-18	1		ea	
99	Corner Angle Filler	Glastender	CILB-LN	1		ea	
100	Back Bar Cabinet, Refrigerated	Glastender	C1SB44	1		ea	
101.1	Water Filtration System, Parts & Accessories	Krowne	KR-HS1-KIT	1		ea	
102	Waste Cabinet	Glastender	SWB-12-C	1		ea	
104	Ice Maker with Bin, Cube-Style	Hoshizaki	IIM-200BAC	1		ea	
105	Back Bar Cabinet, Refrigerated	Glastender	C1SB44	1		ea	

ItemNo	Category
150	Corner Angle Filler
151	Ice Maker with Bin, Cube-Style
151.1	Water Filtration System, Parts & Ac
153	Waste Cabinet
154	Work Center
155	Underbar Add-On Unit
156	Underbar Mixology Sink Unit
157	Blender Station
157.1	Blender, Bar
158	Ice Bin
158.1	Drink Rail
159	Bottle Storage Unit
160	Frozen Drink Machine, Non-Carbor
161	Island Oasis Stand
162	Corner Angle Filler
163	Work Center
164	Underbar Mixology Sink Unit
165	Blender Station
165.1	Blender, Bar
166	Ice Bin
166.1	Drink Rail
167	Bottle Storage Unit
168	Corner Angle Filler
169	Underbar Add-On Unit
170	Work Center
171	Blender Station
171.1	Blender, Bar
172	Underbar Mixology Sink Unit
173	Ice Bin
173.1	Drink Rail
174	Bottle Storage Unit
175	Glass Froster
176	Undercounter Refrigerator

EQUIPMENT LAYOUT

All Dimensions to be verified on the job site. Actual locations for floor drains, and any ventilating equipment to be determined by Engineer. Mechanical, Plumbing & Electrical to be checked and verified by Customers MEP Engineer. Remote Condensing Units to be located by Architect. Exhaust & Supply fans to be located by Architect.

Anantara - North Caicos
Bars
Turks & Caicos
ANANTARA



INTERNATIONAL INC.

2055 W 73rd Street, Miami, FL 33016
Ph: (305)826-8696 Fax: (305)826-9131

No.	Revision/Issue	Date
1	Preliminary Layout	1-23-26
2		
3		
4		

Date
Jan 23, 2026
Drawn By
Paola Mendez
Scale
1/2" = 1'0"

Sheet
FS-1.2