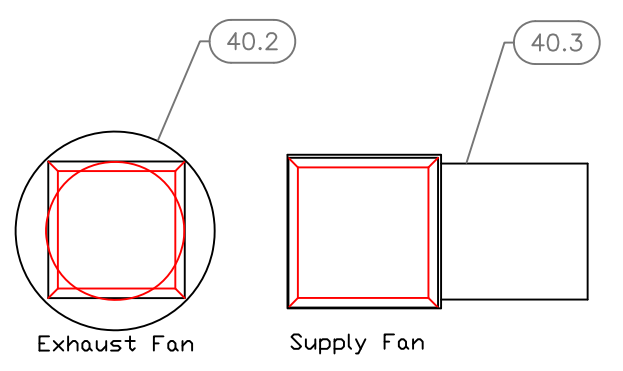
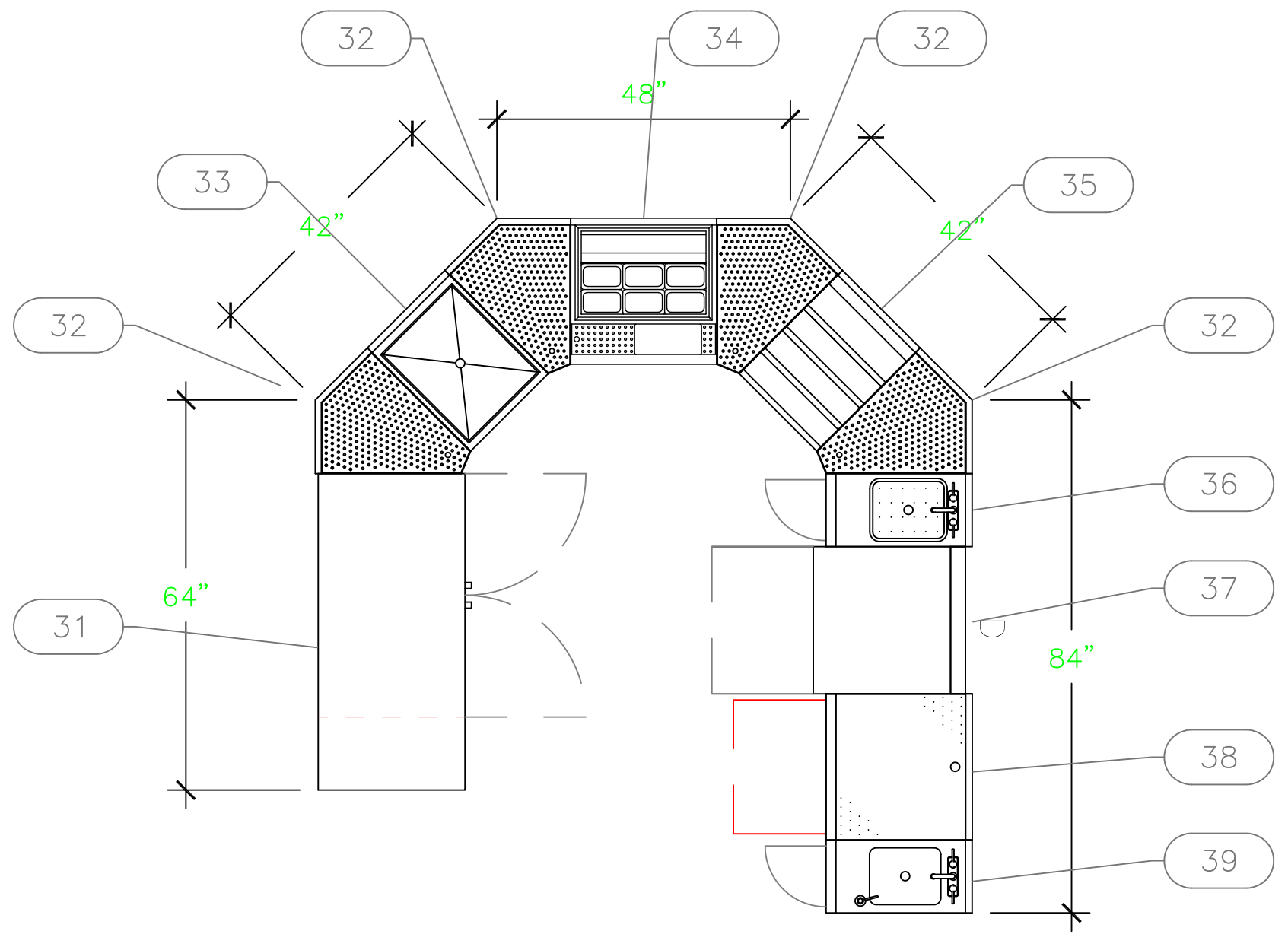


Kitchen



Exhaust & Supply Fans to be located by Architect on Roof
Not To Scale



Bar

EQUIPMENT SCHEDULE					
ItemNo	Category	Mfr	Model	Quantity	Equipment Remarks
1	Shelving Unit, Wire	Quantum	WR63-1848GY	1	
2	Reach-In Refrigerator	Beverage Air	HBR44HC-1	2	
3	Heated Holding Proofing Cabinet, Mobile	BevLes Company	HPC-6836	1	
4	Convection Oven, Electric	Moffat	E23M3	1	
	Equipment Stand, Oven	Moffat	SK23	1	
5	Food Slicer, Electric	Globe (Middleby)	C12	1	
6	Microwave Oven	Panasonic	NE-1054F	2	
7	Induction Range, Countertop	Vollrath	59310	2	
8	Work Table, Stainless Steel Top	Advance Tabco	TVKS-245	2	
9	Shelving, Wall Mounted	Advance Tabco	WS-12-60	2	
10	Rice / Grain Cooker	Panasonic	SR-42HZP	2	
11	Ice Maker, Cube-Style	Hoshizaki	KM-522MAK	1	
		Hoshizaki	B-300SF	1	
11.1	Water Filtration System, Parts & Accessories	Krowne	KR-HS3-KIT	1	
12	Three (3) Compartment Sink	Advance Tabco	FC-3-1824-24RL	1	
12.1	Dishwasher, Undercounter	Jackson WWS	DISHSTAR LT	1	By Owner/Operator
12.2	Overshelf	Advance Tabco	PS-15-96	1	
12.3	Wall / Splash Mount Faucet	Stock	14-814L	1	
14	Rack Dolly	Vollrath	52292	1	
15	Hand Sink	Advance Tabco	7-PS-79	1	
16	Cabinet, Enclosed, Bun / Food Pan	Advance Tabco	EPC-40-X	1	
31	Back Bar Cabinet, Refrigerated	Glastender	C2FB52-L-LR	1	
32	Corner Angle Filler	Glastender	CIWB-45	4	
33	Ice Bin	Glastender	IBB-18	1	
34	Underbar Cocktail Prep Unit, Refrigerated	Glastender	CPC24	1	
35	Bottle Storage Unit	Glastender	LDA-18S	1	
36	Waste Cabinet	Glastender	SWB-12-C	1	
37	Dishwasher, Undercounter	Jackson WWS	DISHSTAR LT	1	By Owner/Operator
38	Glass Rack	Glastender	DBGR-24-RS	1	
39	Hand Sink	Glastender	DHSB-12-C	1	
40	HOOD SYSTEM	Captive-Aire	HOOD-8511696	1	
40.2	Exhaust Fan	Captive-Aire	AH-DU50HFA-8511696	1	
40.3	Supply Fan	Captive-Aire	AH-A1-G10D-8511696	1	

EQUIPMENT LAYOUT

All Dimensions to be verified on the job site.
Actual locations for floor drains, and any ventilating equipment to be determined by Engineer.
Mechanical, Plumbing & Electrical to be checked and verified by Customers MEP Engineer.
Remote Condensing Units to be located by Architect.
Exhaust & Supply fans to be located by Architect.

**Global Lounge
Kitchen & Bar
Bahamas**



INTERNATIONAL INC.

2055 W 73rd Street, Miami, FL 33016
Ph: (305)826-8696 Fax: (305)826-9131

1	Preliminary Layout	10-30-25
2	Added Hood	4-23-26
3		
4		
No.	Revision/Issue	Date

Date
April 23, 2026
Drawn By
Dayne Gauntlett
Scale
1/2" = 1'0"

Sheet
FS-1.0

HOOD INFORMATION - JOB#8511696

HOOD NO	TAG	MODEL	MANUFACTURER	LENGTH	MAX COOKING TEMP	TYPE	APPLIANCE DUTY	DESIGN CFM/FIT	TOTAL EXH CFM	EXHAUST PLENUM RISERS						TOTAL SUPPLY CFM	HOOD CONSTRUCTION	HOOD CONFIG		PATENT NUMBERS
										WIDTH	LENG	HEIGHT	DIA	CFM	VEL			SP	END TO END	
1	KH-1	5424	ADVANCED HOOD	6' 0"	450 DEG	1	MEDIUM	197	1182	10"	11"	4"	1182	1547	-0.251"	946	430 SS	WHERE EXPOSED	ALONE	ALONE

HOOD NO	TAG	TYPE	FILTER(S)			LIGHT(S)			UTILITY CABINET(S)			FIRE SYSTEM		HOOD HANGING WEIGHT			
			QTY	HEIGHT	LENGTH	EFFICIENCY @ 7 MICRONS	QTY	TYPE	WIRE GUARD	LOCATION	SIZE	TYPE	SIZE				
1	KH-1	SS BAFFLE WITH HANDLES	4	20"	16"	30%	3	RECESSED ROUND	NO	RIGHT	12"x54"x24"			SC-211110MA	1 LIGHT 1 FAN	NO	447 LBS

HOOD OPTIONS

HOOD NO	TAG	OPTION
1	KH-1	SENSDR-CV

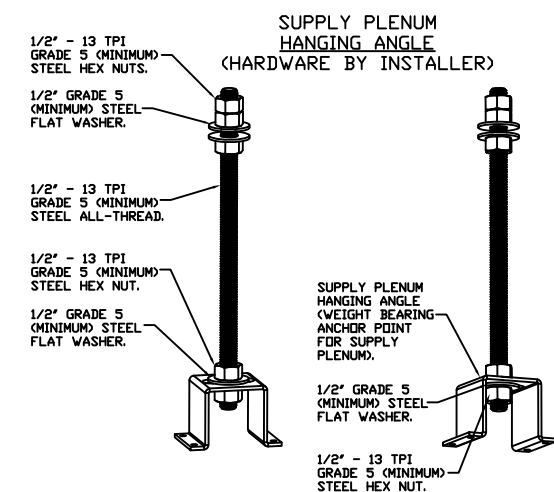
PERFORATED SUPPLY PLENUM(S)

HOOD NO	TAG	POS	LENGTH	WIDTH	HEIGHT	TYPE	RISERS				
							WIDTH	LENG	DIA	SP	
1	KH-1	Front	84"	14"	6"	MUA	12"	28"		946	0.245"

CLEARANCE TO COMBUSTIBLES

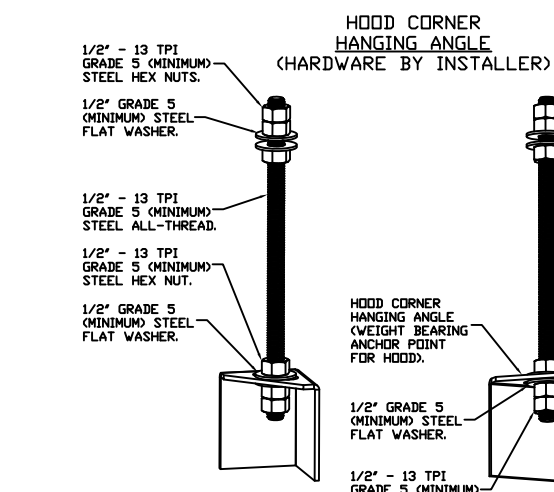
HOODS #	SURFACE	*CLEARANCE
1	TOP	18"
	FRONT	0"
	BACK	18"
	LEFT	18"
	RIGHT	0"

*40" CLEARANCE TO COMBUSTIBLES CONFORMS TO UL710 STANDARD.
- HOOD MOUNTED UTILITY CABINETS REQUIRE 36" SERVICE CLEARANCE.



ASSEMBLY INSTRUCTIONS

HANGING ANGLE MUST BE SUPPORTED WITH 1/2" - 13 TPI GRADE 5 (MINIMUM) ALL-THREAD, SANDWICH HANGING ANGLES AND CEILING ANCHOR POINTS WITH 1/2" GRADE 5 (MINIMUM) STEEL FLAT WASHERS AND 1/2" - 13 TPI GRADE 5 (MINIMUM) HEX NUTS AS SHOWN. MUST USE DOUBLED HEX NUT CONFIGURATION ABOVE CEILING ANCHORS. SINGLE HEX NUT BENEATH HANGING ANGLE IS ACCEPTABLE FOR PSP HANGING ANGLES. MAINTAIN 1/4" OF EXPOSED THREADS BENEATH BOTTOM HEX NUT. TORQUE ALL HEX NUTS TO 57 FT-LBS.

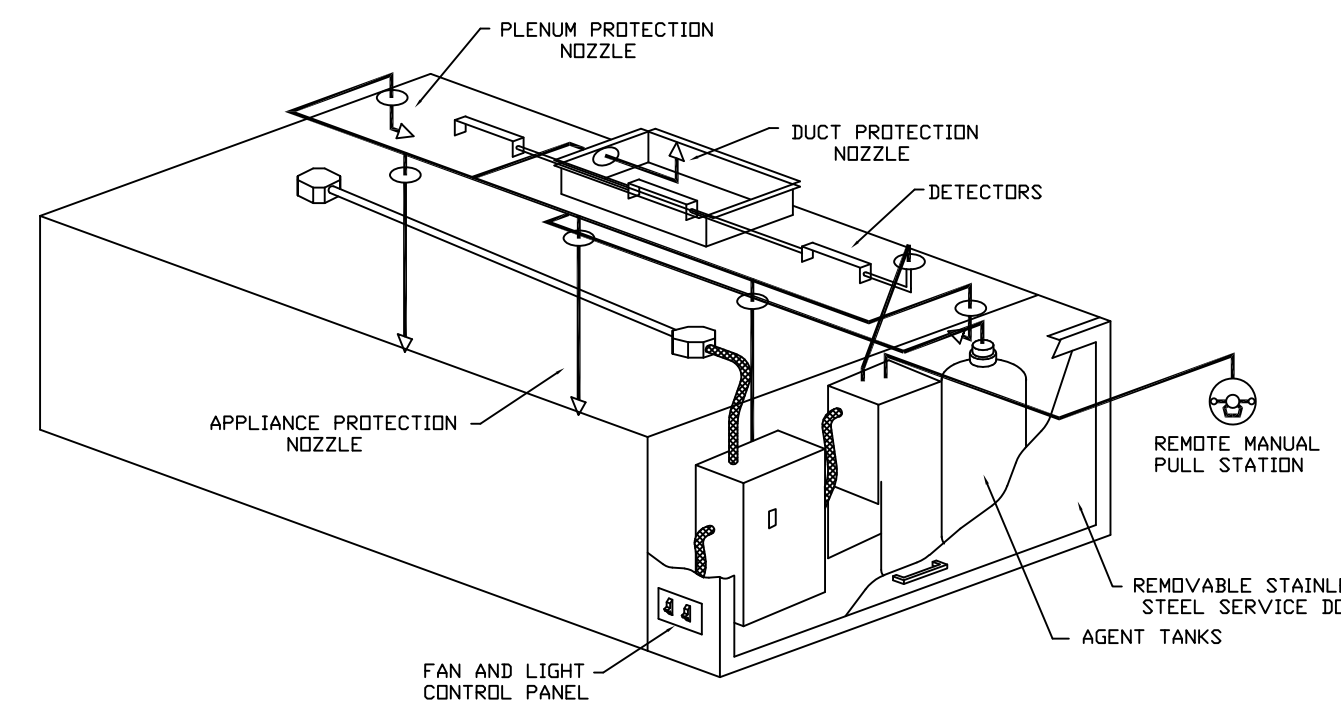


ASSEMBLY INSTRUCTIONS

HANGING ANGLE MUST BE SUPPORTED WITH 1/2" - 13 TPI GRADE 5 (MINIMUM) ALL-THREAD, SANDWICH HANGING ANGLES AND CEILING ANCHOR POINTS WITH 1/2" GRADE 5 (MINIMUM) STEEL FLAT WASHERS AND 1/2" - 13 TPI GRADE 5 (MINIMUM) HEX NUTS AS SHOWN. MUST USE DOUBLED HEX NUT CONFIGURATION BENEATH HOOD HANGING ANGLES AND ABOVE CEILING ANCHORS. MAINTAIN 1/4" OF EXPOSED THREADS BENEATH BOTTOM HEX NUT. TORQUE ALL HEX NUTS TO 57 FT-LBS.

PATENT NUMBERS

AC-PSP (UNITED STATES) - US PATENT 7963830 BR.
AC-PSP WALL (CANADA) - CA PATENT 2820509.
AC-PSP ISLAND (CANADA) - CA PATENT 2580330.



TYPICAL ANSUL SYSTEM LAYOUT

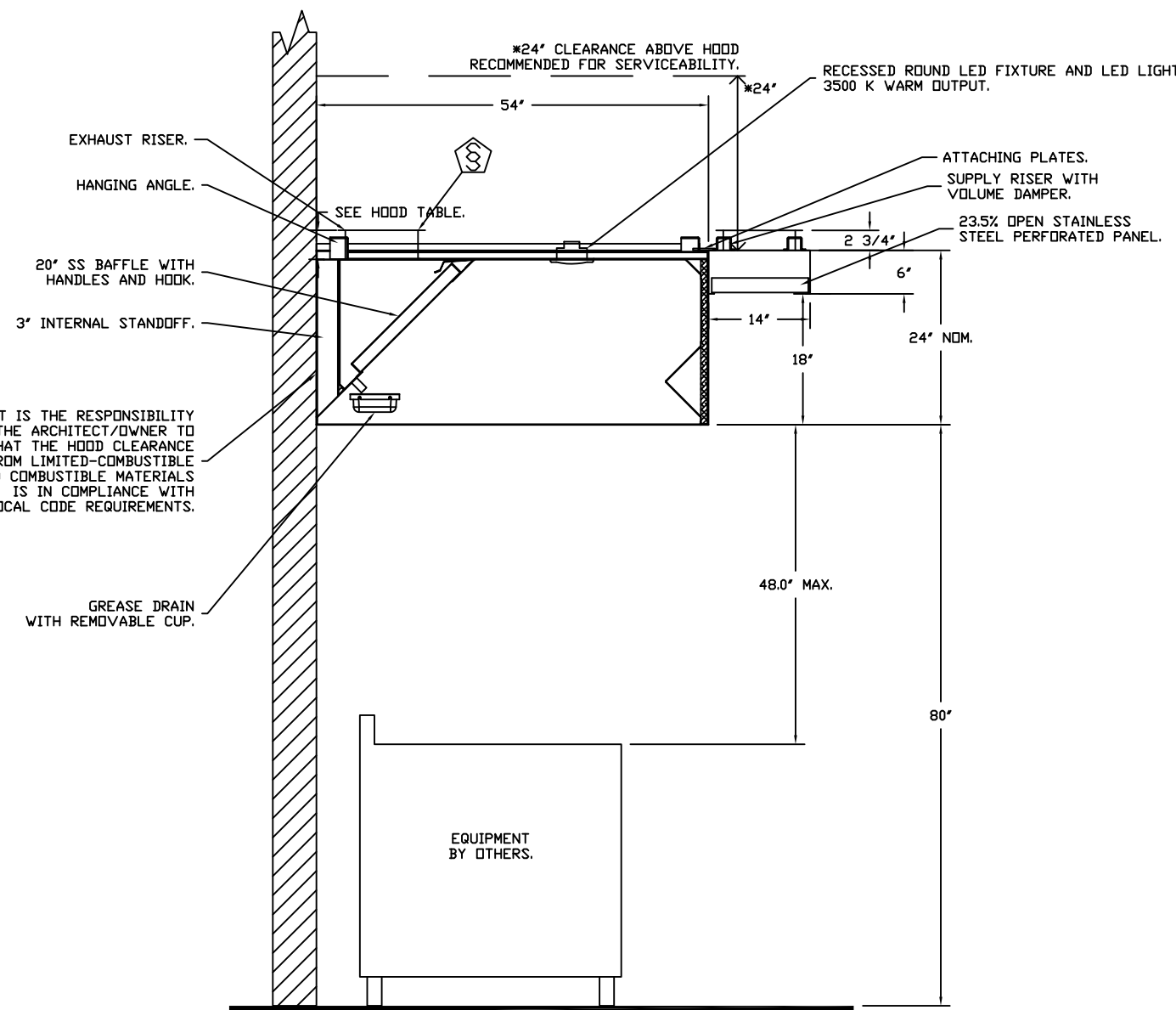
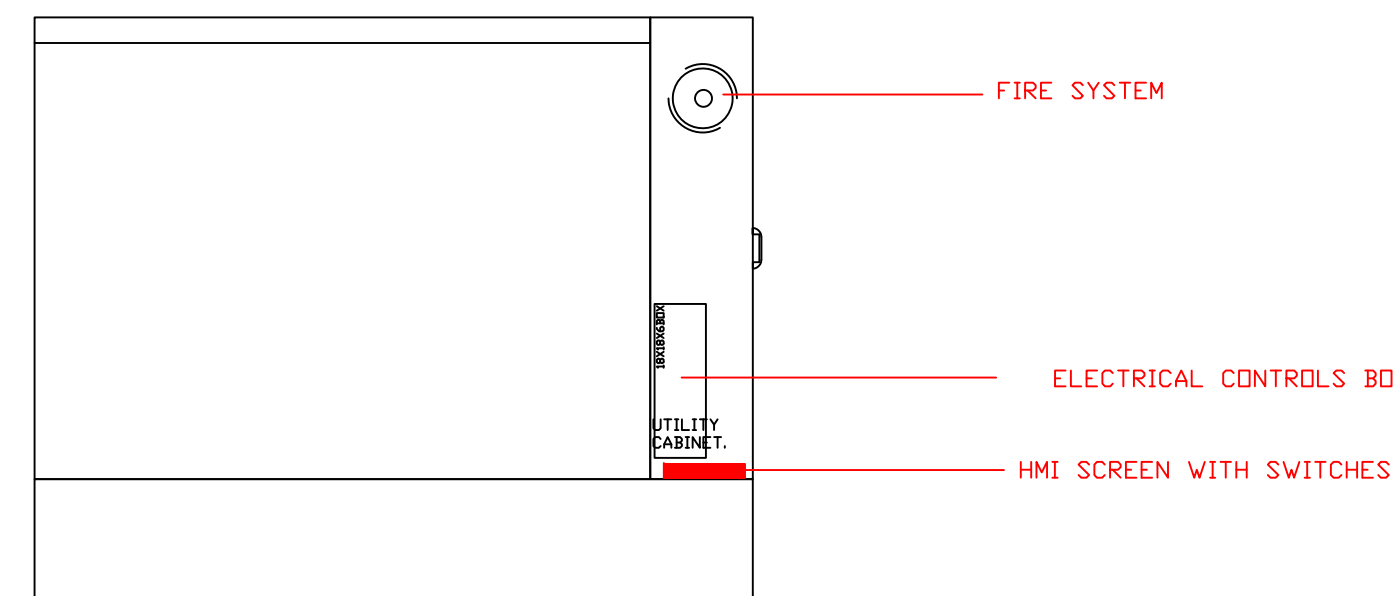
SPECIFICATIONS

THE RESTAURANT FIRE SUPPRESSION SYSTEM SHALL BE THE PRE-ENGINEERED TYPE WITH A FIXED NOZZLE AGENT DISTRIBUTION NETWORK. IT SHALL BE LISTED WITH UNDERWRITERS LABORATORIES, INC. (UL).

THE SYSTEM SHALL BE CAPABLE OF AUTOMATIC DETECTION AND ACTUATION WITH LOCAL OR REMOTE MANUAL ACTUATION. ACCESSORIES SHALL BE AVAILABLE FOR MECHANICAL OR ELECTRICAL GAS LINE SHUT-OFF APPLICATIONS.

THE EXTINGUISHING AGENT SHALL BE A POTASSIUM CARBONATE, POTASSIUM ACETATE-BASED FORMULATION DESIGNED FOR FLAME KNOCKDOWN AND SECUREMENT OF GREASE RELATED FIRES. IT SHALL BE AVAILABLE IN PLASTIC CONTAINERS WITH INSTRUCTIONS FOR LIQUID AGENT HANDLING AND USAGE.

THE PNEUMATIC RELEASE MECHANISM SHALL BE COMPATIBLE WITH A PNEUMATIC TUBE DETECTION SYSTEM. THE PNEUMATIC TUBE SHALL BE SELECTED AND INSTALLED THE FULL LENGTH OF THE HOODS IN THE FILTER PLENUM. THE PNEUMATIC TUBING SHALL BE SUPPORTED BY A BRACKET ASSEMBLY.



SECTION VIEW - MODEL 5424AH-ND-2-PSP-F HOOD - #1 (KH-1)

REVISIONS	DESCRIPTION	DATE
1		
2		
3		
4		

ADVANCED HOOD SYSTEMS
Advanced Hood Systems, LLC
FL PHONE: 754-792-7594 EMAIL: info@advancedhoodsystems.com

**Global Lounge
Kitchen & Bar
Bahamas**

**uni-source
SUPPLY**
INTERNATIONAL INC.

2055 W 73rd Street, Miami, FL 33016
Ph:(305)826-8696 Fax:(305)826-9131

1	Preliminary Layout	10-30-25
2	Added Hood	4-23-26
3		
4		
No.	Revision/Issue	Date

Date
April 23, 2026
Drawn By
Dayne Gauntlett
Scale
NTS

Sheet
FS-6.1

Global Lounge - Bahamas
Miami, FL,

DATE: 2/27/2026

DWG.#:
8511696

DRAWN BY:
SAC-140

SCALE:
3/4" = 1'-0"

MASTER DRAWING

SHEET NO.
1

EXHAUST FAN INFORMATION - JOB#8511696

FAN UNIT NO	TAG	QTY	FAN UNIT MODEL #	MANUFACTURER	CFM	ESP	RPM	MOTOR ENCL.	HP	BHP	PHASE	VOLT	FLA	DISCHARGE VELOCITY	WEIGHT (LBS)	SDNES
1	KEF-1	1	AH-DU50HFA	ADVANCED HODD	1182	0.637	1236	DDP	0.500	0.2720	1	208	4.6	449 FPM	121	10.4

MUA FAN INFORMATION - JOB#8511696

FAN UNIT NO	TAG	QTY	FAN UNIT MODEL #	BLOWER	HOUSING	MIN CFM	DESIGN CFM	ESP	RPM	MOTOR ENCL.	HP	BHP	PHASE	VOLT	FLA	MCA	MDCP	WEIGHT (LBS)	SDNES
2	KSF-1	1	AH-A1-G10D	G10D	A1	-	946	0.250	581	TEAD-ECM	1.000	0.1560	1	208	6.9	8.7A	15A	264	8.2

FAN ACCESSORIES

FAN UNIT NO	TAG	EXHAUST				SUPPLY		
		GRAVITY CUP	GRAVITY DAMPER	WALL MOUNT	SIDE DISCHARGE	GRAVITY DAMPER	MOTORIZED DAMPER	WALL MOUNT
1	KEF-1	YES						
2	KSF-1			YES				

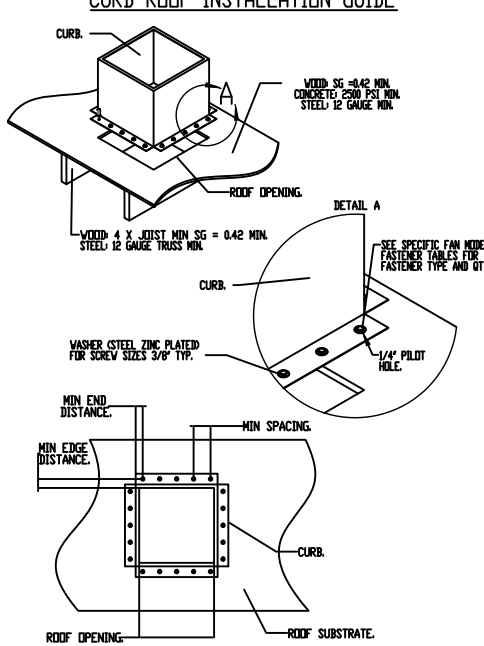
CURB ASSEMBLIES

NO	DN FAN	TAG	WEIGHT	ITEM	SIZE
1	# 1	KEF-1	60 LBS	CURB	19.500"W X 19.500"L X 26.000"H
2	# 2	KSF-1	29 LBS	CURB	21.000"W X 21.000"L X 20.000"H

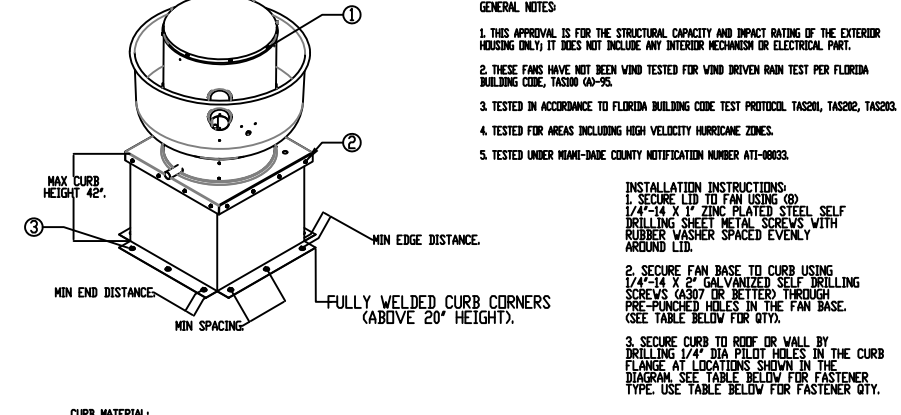
FAN OPTIONS

FAN UNIT NO	TAG	QTY	DESCRIPTION
1	KEF-1	1	GREASE BOX
		1	FAN BASE CERAMIC SEAL - DU/DR50HFA - INSTALLED AT PLANT - FOR GREASE DUCTS
		1	MIAMI DADE CERTIFICATION - NDA-1 ALUMINUM UPBLAST
		1	UPBLAST FAN WHEEL ACCESS PORT
		1	FULL CRATING FOR EXHAUST FANS
		1	2 YEAR PARTS WARRANTY
		1	OPPOSITE SIDE SUPPLY FAN CONTROLS
2	KSF-1	1	MIAMI DADE CERTIFICATION - NDA-2 SUPPLY
		1	ECM WIRING PACKAGE-SUPPLY - MANUAL OR 0-10VDC REFERENCE SPEED CONTROL -MSC- (TELECD, CW ROTATION)
		1	FULL CRATING FOR UNTEMPERED FANS
		1	2 YEAR PARTS WARRANTY

MIAMI DADE COUNTY - CURB ROOF INSTALLATION GUIDE



MIAMI DADE COUNTY ALUMINUM UP-BLAST FANS



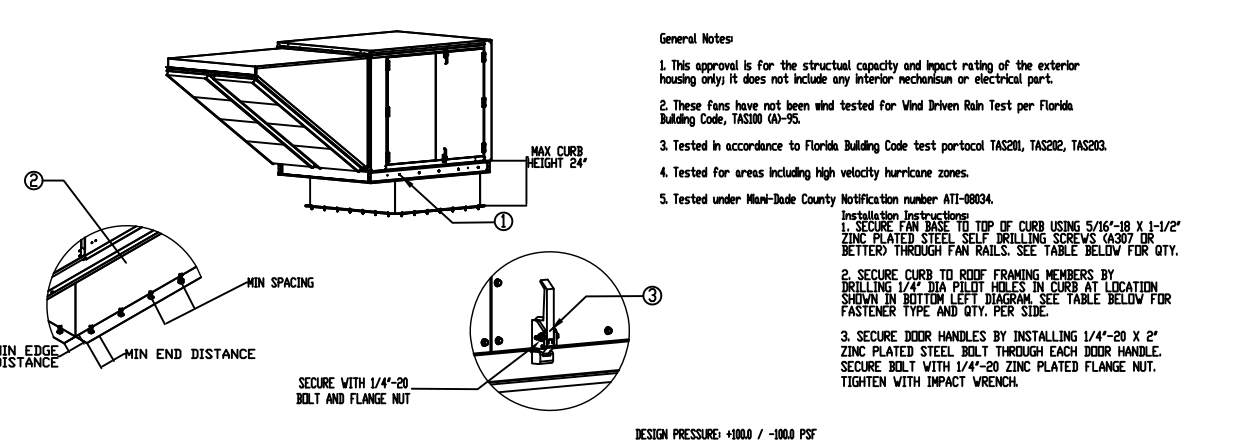
GENERAL NOTES

1. FAN SHOULD BE INSTALLED ON A STRUCTURE CAPABLE OF SUPPORTING THE WEIGHT OF THE FAN AND THE WEIGHT OF THE GREASE BOX COVER AND GREASE PIPE.
2. FAN SHOULD BE INSTALLED ON A STRUCTURE THAT IS NOT SUBJECT TO VIBRATION.
3. FAN SHOULD BE INSTALLED ON A STRUCTURE THAT IS NOT SUBJECT TO CORROSION.
4. FAN SHOULD BE INSTALLED ON A STRUCTURE THAT IS NOT SUBJECT TO EXCESSIVE HEAT.
5. FAN SHOULD BE INSTALLED ON A STRUCTURE THAT IS NOT SUBJECT TO EXCESSIVE WIND.

INSTALLATION FASTENER TYPES

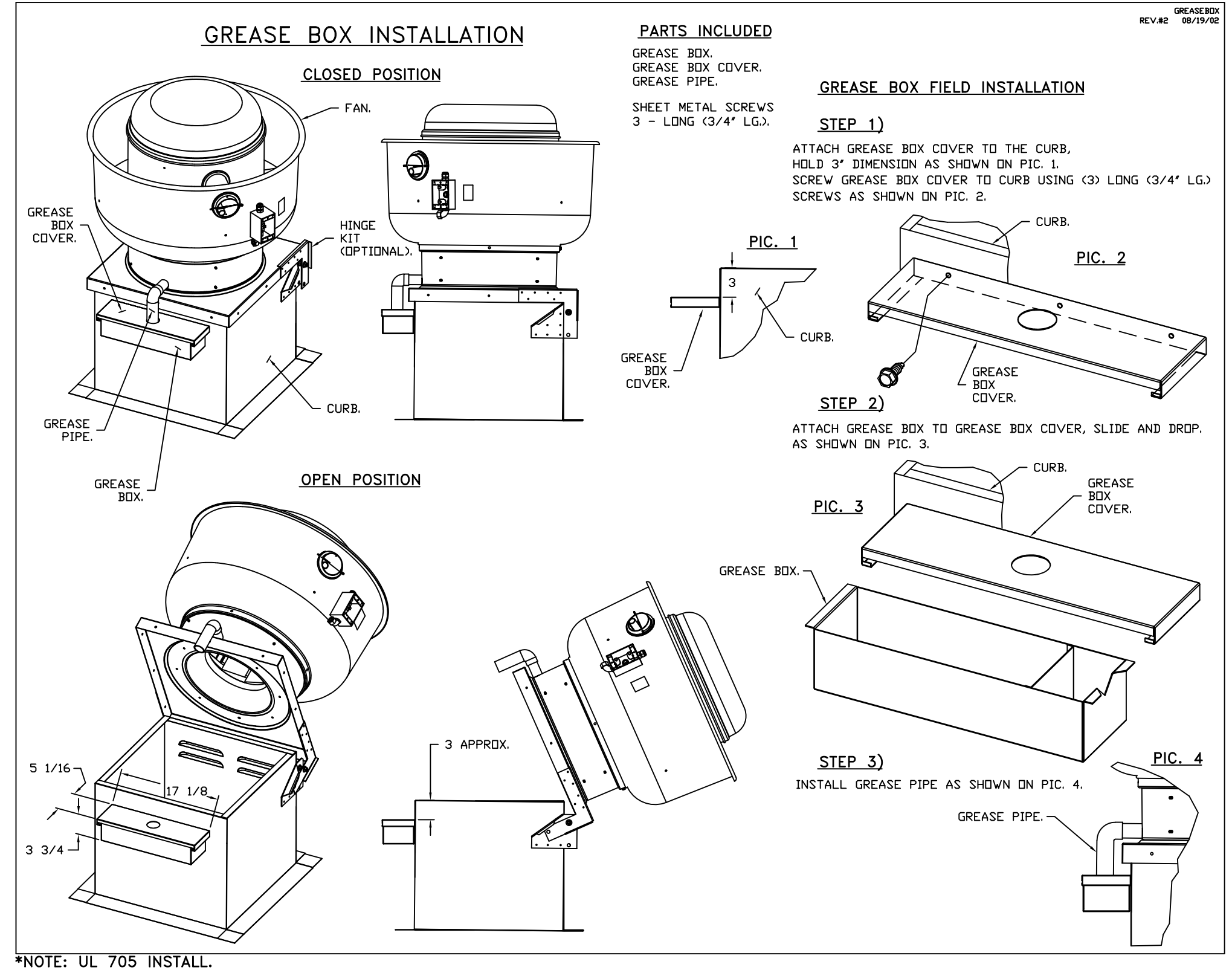
FASTENER	WOOD (2x4, 2x6, 2x8, 2x10, 2x12)	STEEL (1/2" GALV. STEEL)	CONCRETE (3/8" DIA. ANCHOR BOLTS)
FASTENER	3/8" DIA. X 2" SELF DRILLING SCREW (S10)	3/8" DIA. X 2" SELF DRILLING SCREW (S10)	3/8" DIA. X 2" SELF DRILLING SCREW (S10)
MINIMUM END DISTANCE	1 1/2"	1 1/2"	1 1/2"
MINIMUM END SPACING	4"	4"	4"

Multi-Side NDA2 Supply Fans



INSTALLATION FASTENER TYPES

FASTENER	WOOD (2x4, 2x6, 2x8, 2x10, 2x12)	STEEL (1/2" GALV. STEEL)	CONCRETE (3/8" DIA. ANCHOR BOLTS)
FASTENER	3/8" DIA. X 2" SELF DRILLING SCREW (S10)	3/8" DIA. X 2" SELF DRILLING SCREW (S10)	3/8" DIA. X 2" SELF DRILLING SCREW (S10)
MINIMUM END DISTANCE	1 1/2"	1 1/2"	1 1/2"
MINIMUM END SPACING	4"	4"	4"



REVISIONS

NO.	DESCRIPTION	DATE
1		
2		
3		

ADVANCED HOOD SYSTEMS
Advanced Hood Systems, LLC
FL PHONE: FAX: 813.222.0741 EMAIL: info@advancedhoodsystems.com

**Global Lounge
Kitchen & Bar
Bahamas**

**uni-source
SUPPLY**
INTERNATIONAL INC.

2055 W 73rd Street, Miami, FL 33016
Ph:(305)826-8696 Fax:(305)826-9131

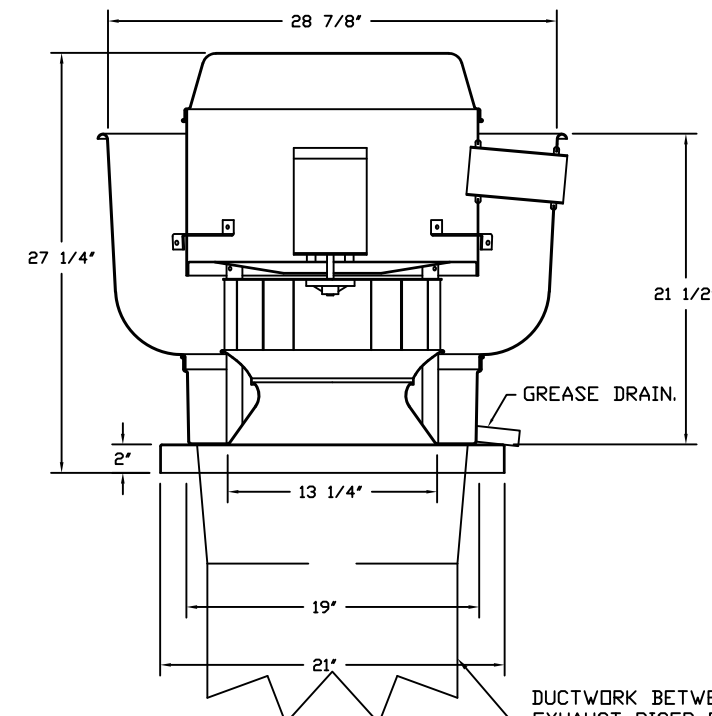
No.	Revision/Issue	Date
1	Preliminary Layout	10-30-25
2	Added Hood	4-23-26
3		
4		

Date
April 23, 2026
Drawn By
Dayne Gauntlett
Scale
NTS

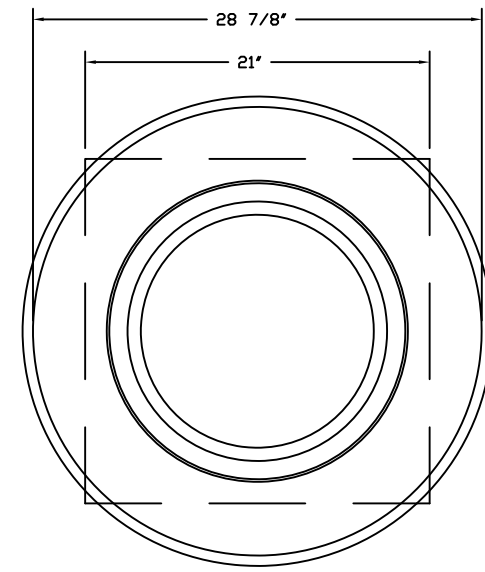
Sheet
FS-6.2

Global Lounge - Bahamas
Miami, FL,
DATE: 2/27/2026
DWG.#: 8511696
DRAWN BY: SAC-140
SCALE: 3/4" = 1'-0"
MASTER DRAWING
SHEET NO. 2

FAN #1 AH-D50HFA - EXHAUST FAN (REF-1)



DUCTWORK BETWEEN EXHAUST RISER ON HOOD AND FAN (BY OTHERS).



TOP VIEW

FEATURES:

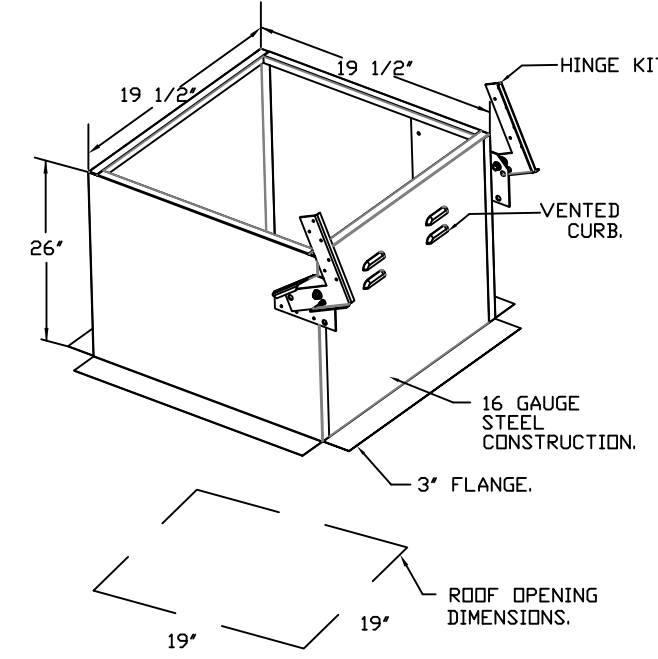
- DIRECT DRIVE CONSTRUCTION (NO BELTS/PULLEYS).
- ROOF MOUNTED FANS.
- RESTAURANT MODEL.
- UL705 AND UL768 AND UL-C-5645
- VARIABLE SPEED CONTROL.
- INTERNAL WIRING.
- THERMAL OVERLOAD PROTECTION (SINGLE PHASE).
- HIGH HEAT OPERATION 300° (149°C).
- GREASE CLASSIFICATION TESTING.
- NEMA 3R SAFETY DISCONNECT SWITCH.

NORMAL TEMPERATURE TEST
EXHAUST FAN MUST OPERATE CONTINUOUSLY WHILE EXHAUSTING AIR AT 300° (149°C) UNTIL ALL FAN PARTS HAVE REACHED THERMAL EQUILIBRIUM AND WITHOUT ANY DETRIMENTAL EFFECTS TO THE FAN WHICH WOULD CAUSE UNSAFE OPERATION.

ABNORMAL FLAME-UP TEST
EXHAUST FAN MUST OPERATE CONTINUOUSLY WHILE EXHAUSTING BURNING GREASE VAPORS AT 600° (316°C) FOR A PERIOD OF 15 MINUTES WITHOUT THE FAN BECOMING DAMAGED TO ANY EXTENT THAT COULD CAUSE AN UNSAFE CONDITION.

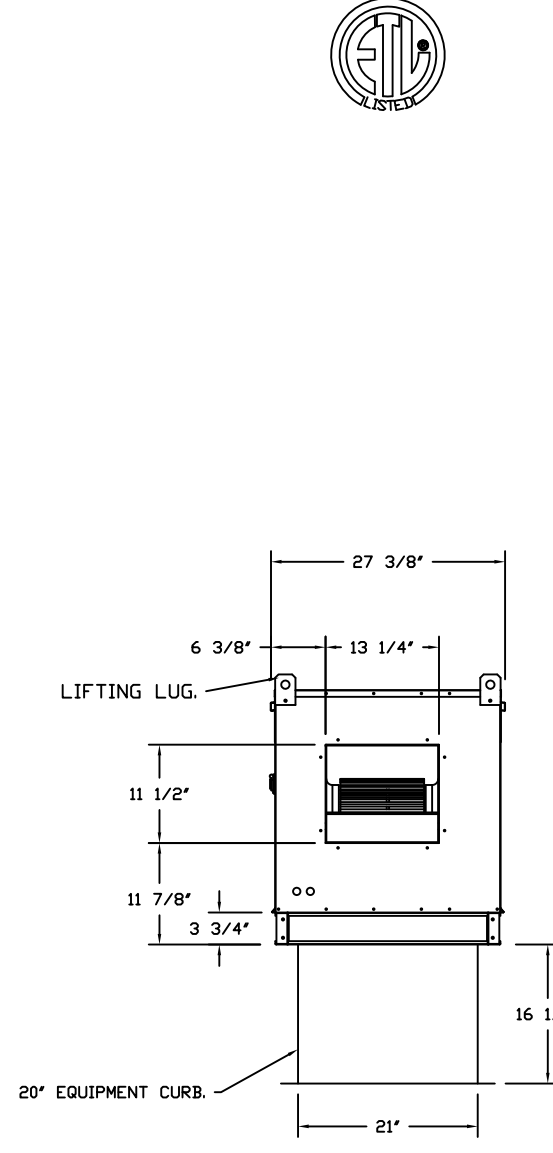
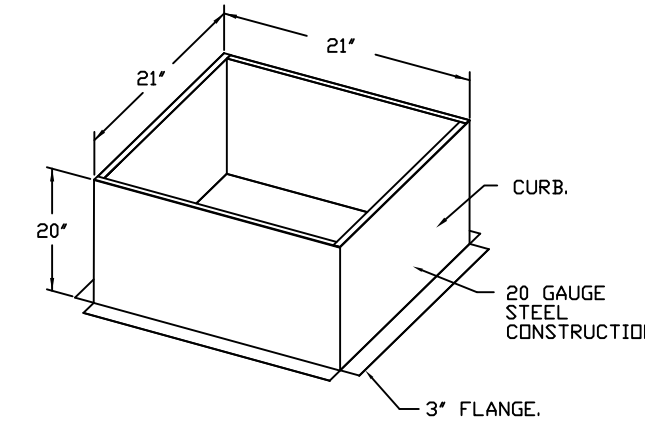
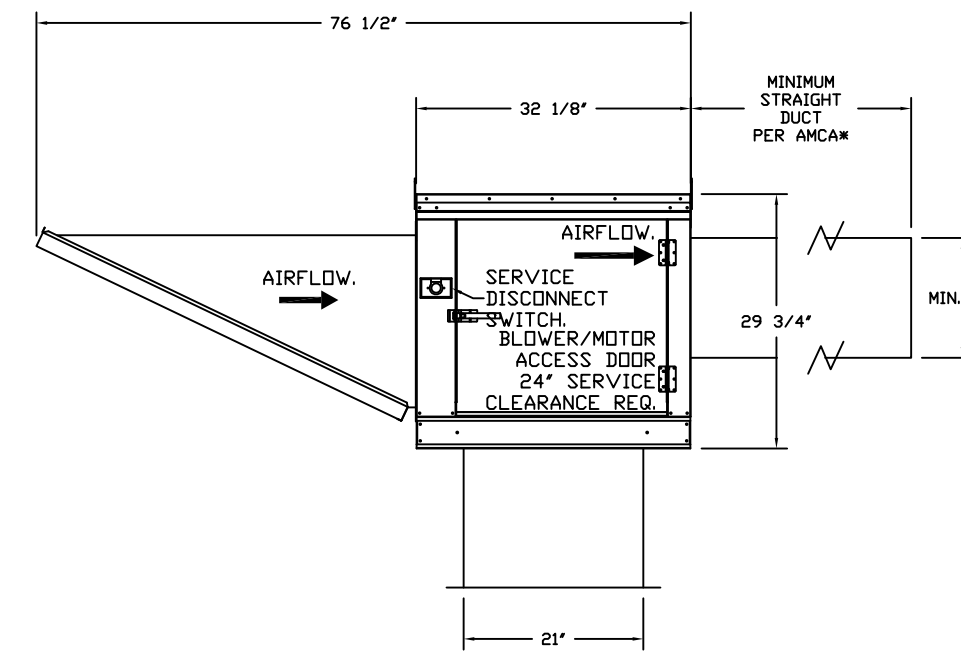
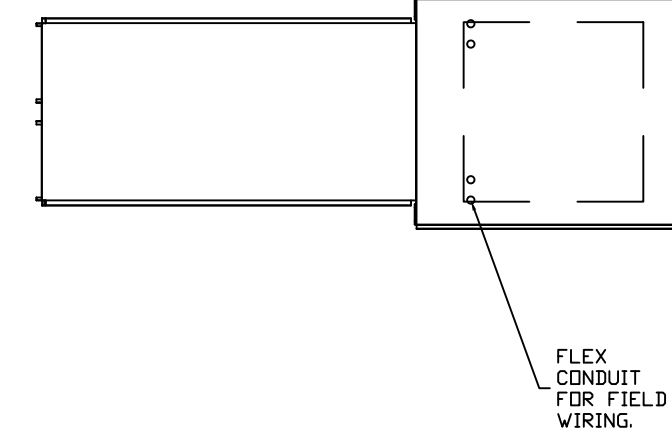
DETAILS:

- GREASE BOX.
- FAN BASE CERAMIC SEAL - DU/DR50HFA - INSTALLED AT PLANT - FDR GREASE DUCTS.
- MIAMI DADE CERTIFICATION - NDA-1 ALUMINUM UPBLAST.
- UPBLAST FAN WHEEL ACCESS PORT.
- FULL CRATING FOR EXHAUST FANS.
- 2 YEAR PARTS WARRANTY.



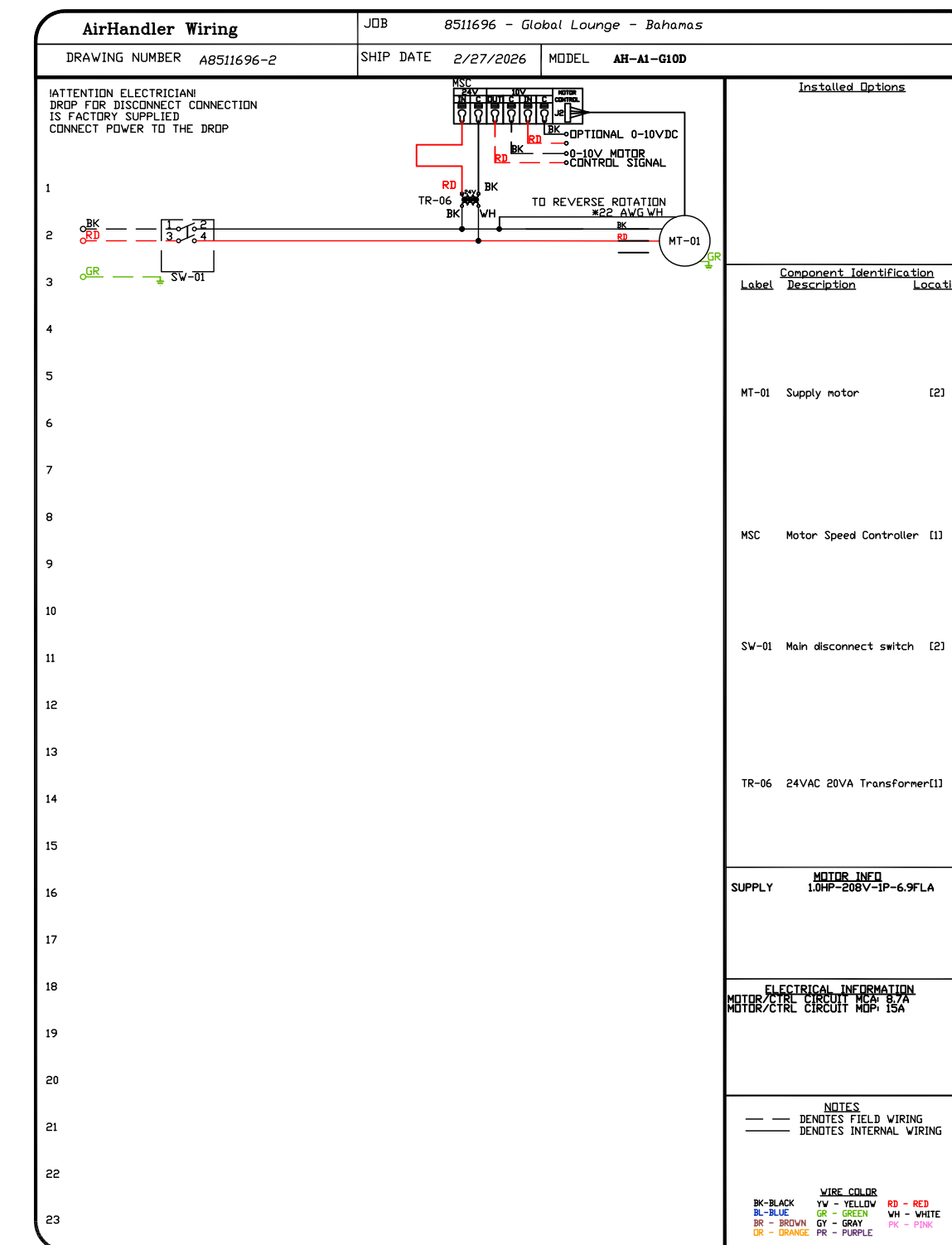
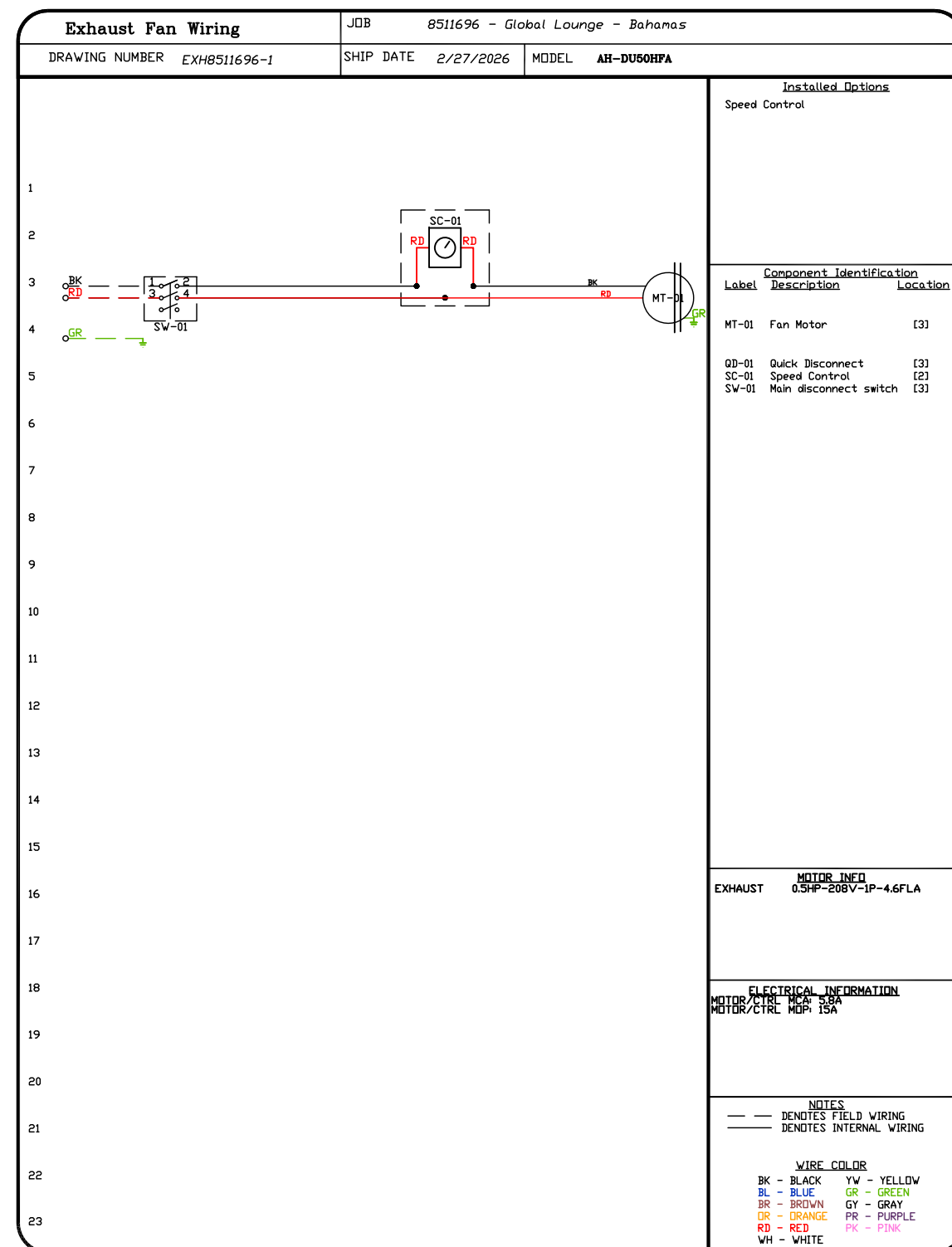
FAN #2 AH-A1-000 - SUPPLY FAN (REF-1)
1. DIRECT DRIVE UNTEMPERED SUPPLY UNIT WITH 10" BLOWER IN SIZE #1 HOUSING WITH SPEED CONTROL, DISCONNECT SWITCH.
2. INTAKE HOOD WITH 12 FILTERS.
3. SIDE DISCHARGE - AIR FLOW LEFT -> RIGHT.
4. HOIST MOTOR AND DISCONNECT ON OPPOSITE SIDE OF FAN.
5. MIAMI DADE IMPACT AND WIND LOAD CERTIFICATION +30 / -130 PSF - MIAMI DADE COUNTY PRODUCT CONTROL APPROVED. FLORIDA BUILDING CODE APPROVAL. ROOF HOIST EXHAUST CURBS UP TO 20" HIGH MUST BE 18 GAUGE ALUMINIZED.
6. ECM WIRING PACKAGE AND MANUAL OR 0-10VDC CONTROL FOR SUPPLY ECM MOTORS. MSC CONTROLLER. **DO NOT ORDER UNDER WARRANTY. SEE PART NUMBER TAGS FOR MISC.
7. FULL CRATING FOR UNTEMPERED FANS FOR SHIPPING.
8. HINGED DOUBLE WALL INSULATED DOOR ASSEMBLY (BURNER/BLOWER SECTION).
9. 2 YEAR PARTS WARRANTY.

NOTE: SUPPLY DUCT MUST BE INSTALLED TO MEET SMACNA STANDARDS. A MINIMUM STRAIGHT DUCT LENGTH MUST BE MAINTAINED DOWNSTREAM OF UNIT DISCHARGE AS OUTLINED IN ANCA PUBLICATION 800. WHEN USING RECTANGULAR DUCTWORK, ELBOWS MUST BE RADIUS THROAT, RADIUS BACK WITH TURNING VANES, FLEXIBLE DUCTWORK AND SQUARE THROAT/SQUARE BACK ELBOWS SHOULD NOT BE USED. ANY TURNING AND/OR TURNS IN THE DUCTWORK WILL CAUSE SYSTEM EFFECT. SYSTEM EFFECT WILL DRASTICALLY INCREASE STATIC PRESSURE AND REDUCE AIRFLOW. DO NOT RELY ON UNIT TO SUPPORT DUCT IN ANY WAY. FAILURE TO PROPERLY SIZE DUCTWORK MAY CAUSE SYSTEM EFFECTS AND REDUCE PERFORMANCE OF THE EQUIPMENT.
SUGGESTED SUPPLY STRAIGHT DUCT SIZE IS 14" x 14".



REVISIONS	
DESCRIPTION	DATE

ADVANCEEE
HOOD SYSTEMS
Advanced Hoods Systems, LLC
... FL PHONE: FAX: 9182275974 EMAIL: info@advancedhoodsystems.com



**Global Lounge
Kitchen & Bar
Bahamas**



INTERNATIONAL INC.

2055 W 73rd Street, Miami, FL 33016
Ph:(305)826-8696 Fax:(305)826-9131

1	Preliminary Layout	10-30-25
2	Added Hood	4-23-26
3		
4		
No.	Revision/Issue	Date

Date
April 23, 2026
Drawn By
Dayne Gauntlett
Scale
NTS

Sheet
FS-6.3

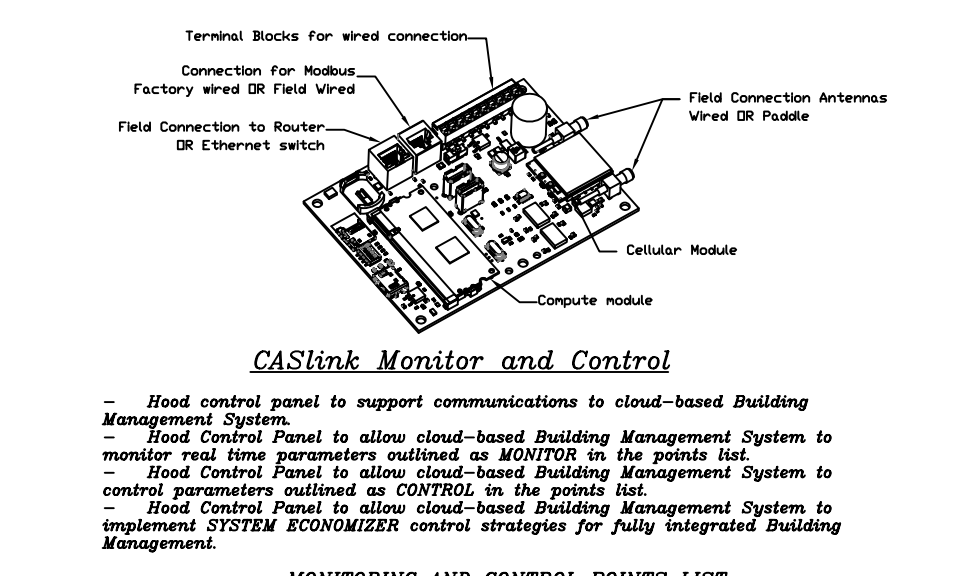
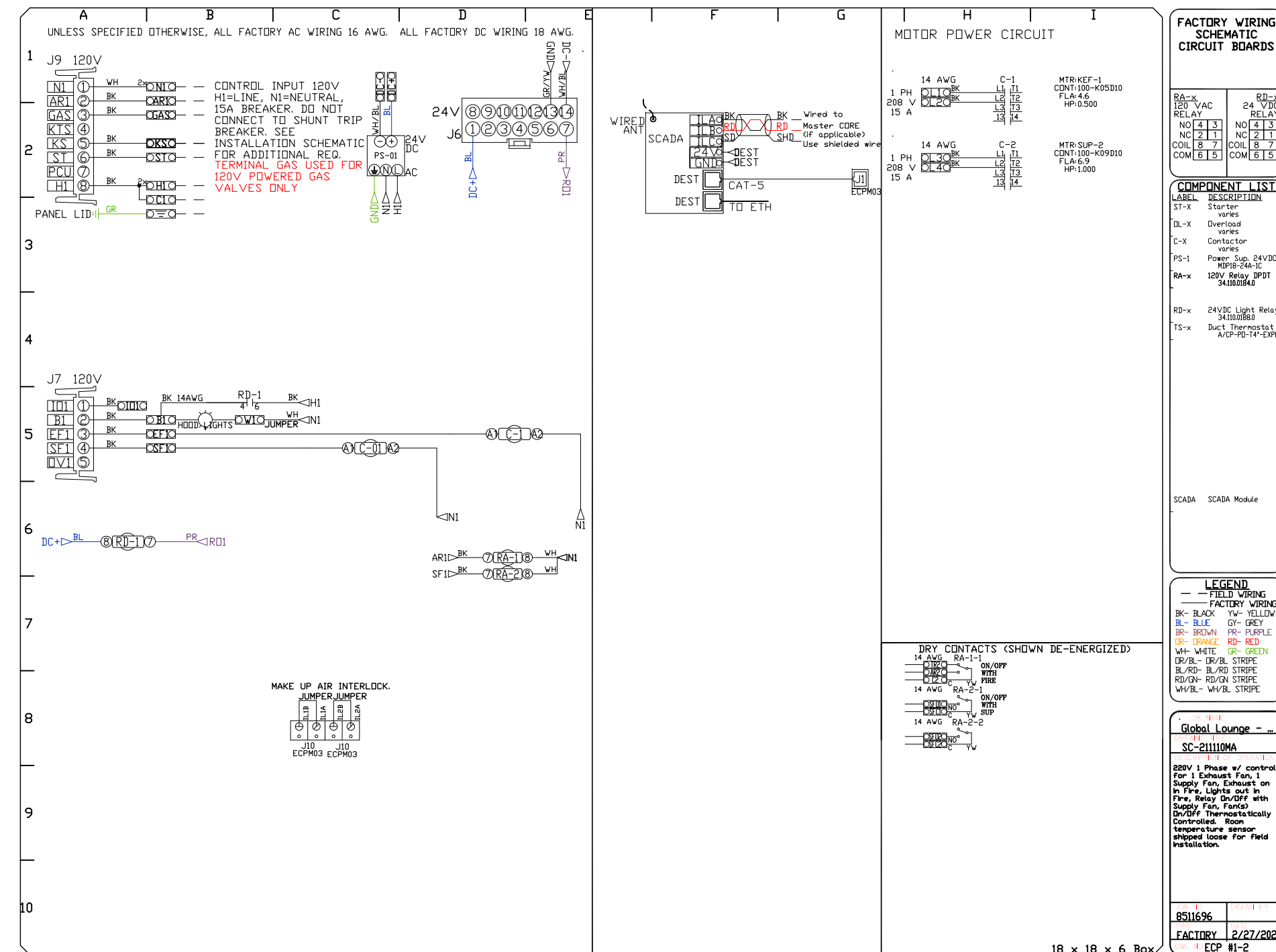
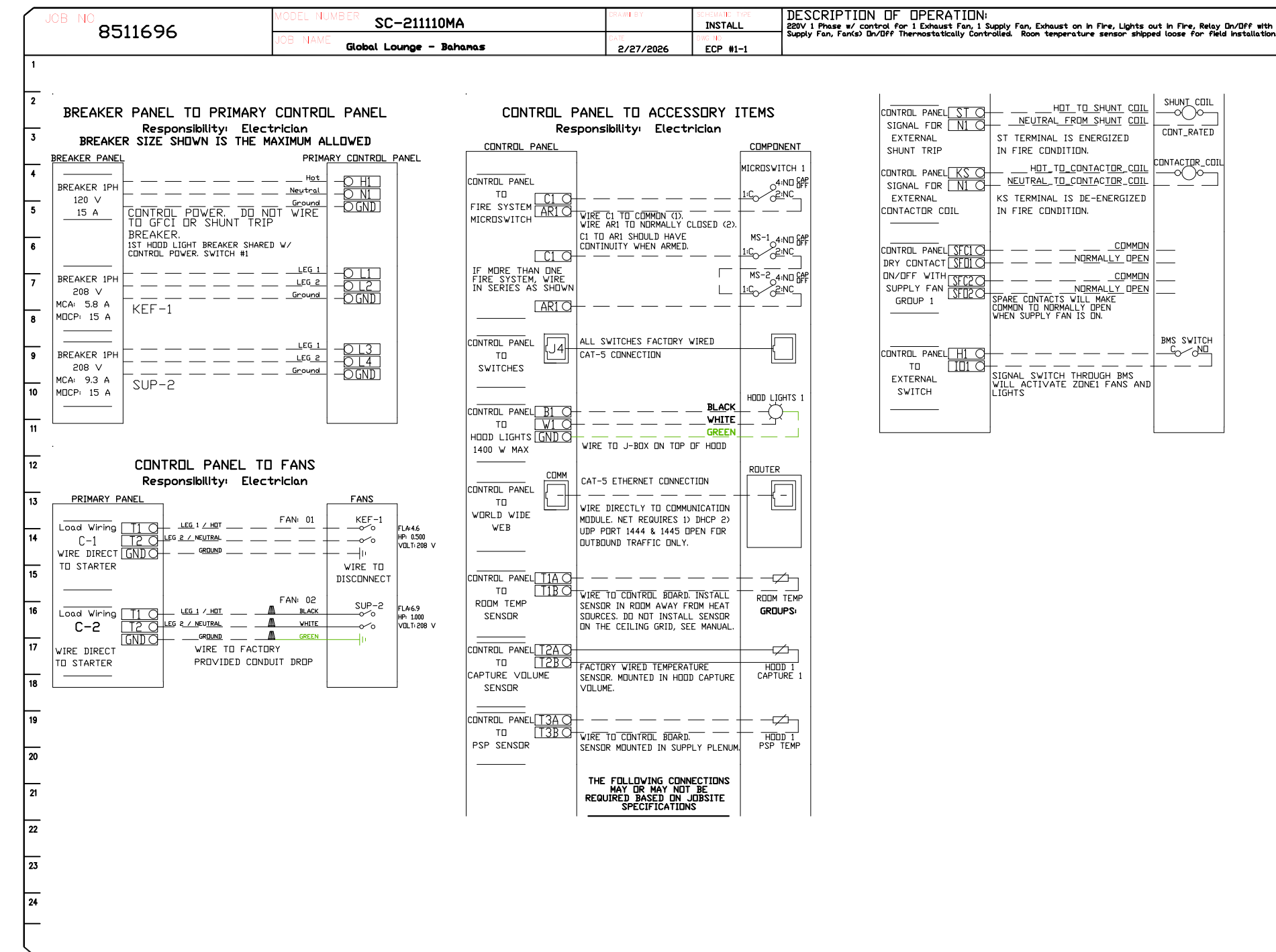
Global Lounge - Bahamas
Miami, FL,

DATE: 2/27/2026
DWG.#: 8511696
DRAWN BY: SAC-140
SCALE: 3/4" = 1'-0"
MASTER DRAWING

SHEET NO. 3

ELECTRICAL PACKAGE - JOB#8511696

NO	TAG	PACKAGE #	LOCATION	SWITCHES		OPTION	FANS CONTROLLED					
				LOCATION	QUANTITY		FAN TAG	TYPE	#	HP	VOLTI	FLA
1		SC-21110MA	UTILITY CABINET RIGHT HOOD # 1		1 LIGHT 1 FAN	SMART CONTROLS THERMOSTATIC CONTROL W/ RELAY ON/OFF WITH SUPPLY	KEF-1	EXHAUST	1	0.500	208	4.6



MONITORING AND CONTROL POINTS LIST

DCV Packages	Function	DC Packages	Function
Room Temperature	MONITOR	Room Temperature(s)	MONITOR
Roof Temperature	MONITOR	Roof Temperature(s)	MONITOR
RTU Discharge Temperature	MONITOR	RTU Discharge Temperature	MONITOR
RTU Discharge Temperature	MONITOR	RTU Discharge Temperature	MONITOR
Fan Speed	MONITOR	Controler Fan(s)	MONITOR
Fan Amperage	MONITOR	Fan Fan(s)	MONITOR
Fan Power	MONITOR	Fan Status	MONITOR
PCU Fan(s)	MONITOR	PCU Fan(s)	MONITOR
Controler Fan(s)	MONITOR	PCU Filter Clog Percentage	MONITOR
Fan Fan(s)	MONITOR	Fan Fan(s)	MONITOR
Fan Status	MONITOR	COSE Fire System	MONITOR
PCU Fan(s)	MONITOR	Building Pressure	MONITOR
PCU Filter Clog Percentage	MONITOR	Fan Status(s)	MONITOR & CONTROL
Fire Condition	MONITOR	Light Button(s)	MONITOR & CONTROL
COSE Fire System	MONITOR	Flush Button	MONITOR & CONTROL
Building Pressure	MONITOR		
Prep Time Button	MONITOR & CONTROL		
Fan Button	MONITOR & CONTROL		
Light Button	MONITOR & CONTROL		
Flush Button	MONITOR & CONTROL		

REVISIONS

NO.	DESCRIPTION	DATE
1		
2		
3		
4		

ADVANCED HOOD SYSTEMS
Advanced Hood Systems, LLC
FL PHONE: FAX: 3122/2026 EMAIL: info@advancedhoodsystems.com

**Global Lounge
Kitchen & Bar
Bahamas**



INTERNATIONAL INC.
2055 W 73rd Street, Miami, FL 33016
Ph:(305)826-8696 Fax:(305)826-9131

1	Preliminary Layout	10-30-25
2	Added Hood	4-23-26
3		
4		
No.	Revision/Issue	Date

Date
April 23, 2026
Drawn By
Dayne Gauntlett
Scale
NTS

Sheet
FS-6.4

Global Lounge - Bahamas
Miami, FL,
DATE: 2/27/2026
DWG.#: 8511696
DRAWN BY: SAC-140
SCALE: 3/4" = 1'-0"
MASTER DRAWING
SHEET NO. 4